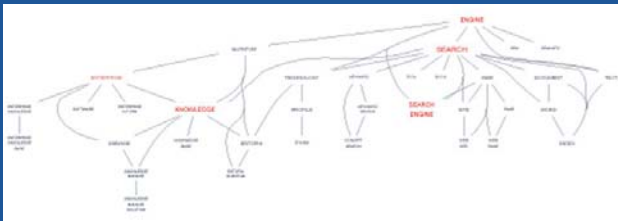




Entopia Quantum 1.5 New Features List

Coupled tightly with other enterprise applications and business processes, Entopia Quantum empowers individuals, workgroups, and the enterprise with content, information, document management, collaboration and search capabilities in one, holistic bottom-up knowledge management solution.

The latest release of Entopia's bottom-up knowledge management solution, Quantum, adds broader functionality to Entopia's semantic search engine, the Entopia Knowledge Locator™, which recently won the "Best Search Engine" award in the 2003 Software & Information Industry Codie Awards.



ENTOPIA K-MAP (KNOWLEDGE MAP)

Entopia Quantum 1.5's enhanced "Capitalize" module includes the ability to summarize a collection of documents into a visual representation called a K-Map. It allows knowledge workers to select a folder, or the results of a search query, and display a graphical, semantic network representation of the relationships between concepts contained in the selected documents.

The screenshot displays the Entopia Quantum 1.5 interface. At the top, there's a navigation bar with 'ipensis', 'User Profile', 'Install', 'Help', and 'Logout'. Below that, a search bar and a 'Quick Search' button are visible. The main area is divided into several sections:

- Queries [10]:** A table listing search queries with columns for 'Keywords', 'Type', 'Updated', and 'Match'.

Keywords	Type	Updated	Match
search engine technology	All	Jan 24, 2003	8668
knowledge	All	Jan 24, 2003	895
management	Document	Jan 24, 2003	404
entopia	Document	Jan 24, 2003	197
quantum	Document	Jan 24, 2003	94
Press	All	Jan 24, 2003	1660
release	Document	Jan 24, 2003	644
Database	All	Jan 24, 2003	3213
PCD	All	Jan 24, 2003	642
Entopia	All	Jan 24, 2003	3592
- Documents:** A table listing search results with columns for 'Type', 'Title', 'Path', 'Collector', 'Modified', and 'Relevance'.

Type	Title	Path	Collector	Modified	Relevance
	Providina Structure for the Knowledge	/My Server/Felder/Delo	bbutler	Apr 10, 2002	100
	Interactina Knowledge and Learning	/My Server/Felder/Delo	bbutler	Apr 10, 2002	100
	Knowledge Based, Externally Driven	/My Server/Felder/Delo	bbutler	Apr 10, 2002	100
	Innovation in Customer Knowledge Del	/My Server/Felder/Delo	bbutler	Apr 10, 2002	100
	The Human Dimension of Knowledge	/My Server/Felder/Delo	bbutler	Apr 10, 2002	100
	Computerwire - Sheina 9.24.01.doc	/Entopia Intranet/.../Co	khootsma@us.kanara	Nov 28, 2001	99
	Entopia Overview.ppt	/Entopia Intranet/.../Co	khootsma@us.kanara	Nov 28, 2001	99
	Visualization Tools Key to Exploring	/Entopia Intranet/.../Co	nik	Nov 27, 2001	99
	IT Solutions Demand for 2001-2002	/Entopia Intranet/.../Co	nik	Nov 27, 2001	99
	The New Synergy.ppt	/My Server/Felder/Garth	akatz@us.kanara	Nov 26, 2001	99
	quantum SATI 11.24.01.ppt	/Entopia Intranet/.../Prv	mlomaxr@us.kanara	Nov 26, 2001	99
	Quantum web internal training 2/ASTI	/Entopia Intranet/.../Prv	mlomaxr@us.kanara	Nov 26, 2001	99
	Competition presentation.ppt	/Entopia Intranet/.../Prv	nik	Jan 14, 2002	99
	EPresentation0201	/Entopia Intranet/.../Prv	iperisic@us.kanara	Nov 20, 2001	99
	3 Ideas	/Entopia Intranet/.../Prv	lionel@us.kanara	Nov 18, 2001	99
	MIT Conference - Final Draft	/Entopia Intranet/.../Prv	iperisic@us.kanara	Nov 16, 2001	99
	EPresentation2001final	/Entopia Intranet/.../Prv	iperisic@us.kanara	Nov 16, 2001	99
	Entopia Corp brochure.pdf	/Entopia Intranet/.../Prv	nik	Nov 12, 2001	99
	British Library	/Entopia Intranet/.../Prv	nik	Jun 12, 2001	99
	EP version 1	/My Server/Felder/Mami	lionel@us.kanara	May 15, 2001	99
	Products	/My Server/Felder/Mami	lionel@us.kanara	May 3, 2001	99
	June 7, 2001 June 7, 2001	/My Server/Felder/Steve	mlomaxr@us.kanara	Jun 7, 2001	99
	KanaraonnetProduct060101.ppt	/My Server/Felder/Steve	mlomaxr@us.kanara	Jun 7, 2001	99
- Sources [228]:** A table listing sources with columns for 'Source Name', 'No. of Q-Files', 'Relevance', and 'User'.

Source Name	No. of Q-Files	Relevance	User	Relevance
www.pcmag.com	8	100	khootsma@us.kanara	100
www.kmworld.com	130	100	iperisic@us.kanara	100
www.atd.com	10	100	smoller@us.kanara	100
www.business.com	2	96	mlomaxr@us.kanara	100
www.mckinseyquarterly.com	4	85	adanner@us.kanara	100
www.brint.com	163	57	eherring@us.kanara	100
www.cio.com	17	42	hhuehes@us.kanara	100
www.electra.knowledge.com	8	41	spasse@us.kanara	100
www.infonomix.com	26	40	akatz@us.kanara	100
www.zdnet.com	23	37	mlomaxr@us.kanara	100
www.inktom.com	4	36	trahle@us.kanara	100
www.stratagy-business.com	115	36	banicak@us.kanara	96
www.aartner.com	54	36	lionel@us.kanara	96
www.informationweek.com	60	35	iperisic@us.kanara	85
www.siqmcb.com	77	35	veerinsk@us.kanara	57
www.aartner.com	34	34	svasquez@us.kanara	42

WORKFLOW INTEGRATION

Entopia Quantum 1.5 incorporates a new workflow module to facilitate integration with the end-user's daily workflow and project management. The module features a project wizard, project templates, project workspace management, task assignment and task tracking.

REPORTING TOOL

For administrators, Entopia Quantum 1.5 offers a reporting tool that delivers accurate user statistics and usage reports to effectively monitor collaborative user activity and measure the effectiveness of your bottom-up knowledge management solution. Standard reports include system and document activity such as number of documents created and number of times a document is read. Reports are customizable and data can be exported to existing enterprise reporting tools.

QUERY HISTORY & QUERY MANAGEMENT

Entopia Quantum 1.5's enhanced "Capitalize" module provides advanced Query History and Query Management. Because queries are stored automatically in Quantum, the Query Management's easy-to-use functionality allows users to refine (search within), modify and update stored queries.

Contact us for more information

U.S. Headquarters	French Sales Office	U.K. Sales Office
1301 Shoreway Road	Tour Europlaza	65 Manor Road
Suite 302	Défense 4	Wickhamford
Belmont CA 94002	92927 Paris la Défense	Evesham, WR11 7SA
USA	France	United Kingdom
P: +1.650.632.0101	P: +33.(0)1.58.13.50.45	P: +44.(0)1386.833.652
F: +1.650.802.6709	F: +33.(0)1.58.13.50.51	F: +44.(0)8701.305.966
	www.entopia.com	





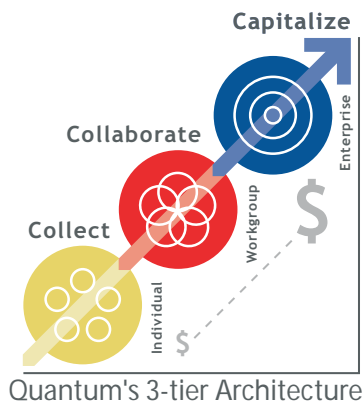
Entopia Quantum




Bottom-Up Knowledge Management Software

Entopia's Quantum™ bottom-up knowledge management software suite is designed to enhance individual, workgroup, and enterprise productivity across a wide range of information-intensive industries. The Quantum solution features a 3-tiered product architecture that enables individuals to collect information from any digital source, allows workgroups to collaborate in project or team-based shared spaces, and empowers enterprises to capitalize on accumulated knowledge by locating documents, experts, and information sources.



Entopia Quantum Overview



-  *Individual benefits: Collect information needed to do your job.*
-  *Workgroup benefits: Collaborate with peers around deliverables or communities of practice.*
-  *Enterprise benefits: Capitalize on hidden knowledge in the corporation to make better decisions, bring products to market faster, and close deals.*

Use Entopia Quantum to create highly valuable intellectual capital for the enterprise as a natural by-product of personal productivity and information gathering.

WHAT MAKES ENTPIA QUANTUM DIFFERENT FROM OTHER KNOWLEDGE MANAGEMENT SOFTWARE SOLUTIONS?



Unlike other knowledge management software solutions, Entopia Quantum creates intellectual capital - both explicit and tacit - as a natural by-product of personal and workgroup activity. This results in much higher end-user participation than other systems. Quantum is unique in its ability to identify disconnected and hidden information across the enterprise. Another differentiator is Entopia Quantum's approach to expertise identification, which is based on dynamic profiling of user activity to uncover tacit knowledge.

By offering technology that provides the end user with a tool to manage their own personal knowledge, the Entopia Quantum software suite builds a highly valuable repository of corporate information assets to facilitate knowledge creation and improve business decision-making. The result is improved productivity in the form of shared practices, greater cost efficiencies, better customer relations, faster sales cycles, shortened product time-to-market, and better decision-making.

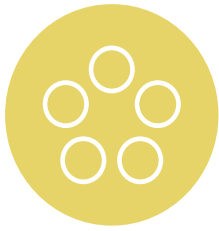


"Entopia delivers innovative software that enables knowledge-workers to collectively build-up a rich repository of corporate knowledge and share their insights and expertise across the enterprise. By delivering a non-intrusive solution designed to enhance personal productivity desktops, Entopia can help individual workers to save valuable research time and also allow project teams to easily collaborate around a shared set of knowledge assets."

Madan Sheina, Principal Analyst, ComputerWire

"First-generation approaches to Knowledge Management discouraged end user participation by requiring a significant, proactive investment of time and energy in order to contribute to the knowledge base. Entopia Quantum addresses this challenge head-on, effectively guaranteeing adoption by presenting itself to users as an efficient and user-friendly tool for information management and personal productivity. Exploiting this widespread participation with automated and semantically intelligent knowledge capture and indexing, the suite promises to greatly improve access to actionable knowledge and expert resources."

Charles Luce, Senior Analyst, Delphi Group



COLLECT

FOR THE INDIVIDUAL

Advanced information gathering, organization, and annotation.

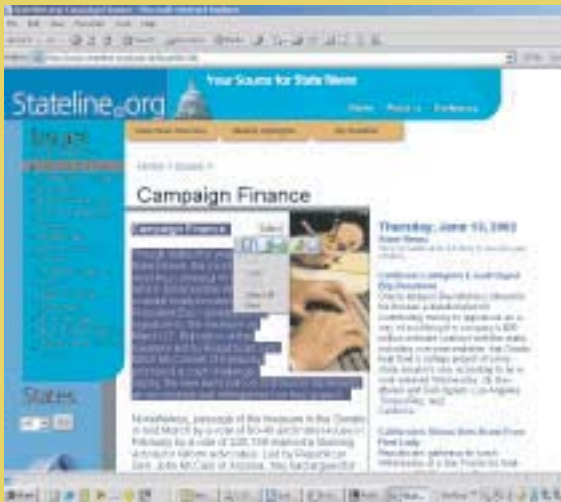
Residing on the computer desktop, Quantum Collect easily captures unstructured information from any digital source, including the Web, e-mail, Microsoft® Word, PowerPoint, Excel, and Adobe® PDF files. Quantum Collect also enables the use of forms to help manage structured information, such as contact management or company records. All collected information - whether the complete original source or relevant sections (a portion of text, an image, part of spreadsheets, or email) - is stored, viewed, and used within a single workspace. This allows users to browse, enrich, and edit information collected from various sources from within a single application.

During collection, Quantum's semantic engine identifies key concepts from the collected information. Quantum then pairs these key concepts with contextual information, including user identity and the source of information used. Together, the key concepts and its contextual information are stored as metadata in the form of a dynamic semantic profile. This process takes place automatically and is invisible to the user, thereby ensuring the collection of critical metadata.

By leveraging Entopia's semantic engine, Quantum Collect provides an automatic summary and suggests the best classification of the information. The original information sources are always made available for convenient reference. Available as a local, Windows®-based application or as a browser-based client, Quantum Collect takes the pain out of gathering, organizing, and enriching information.

Collect information needed to do your job.

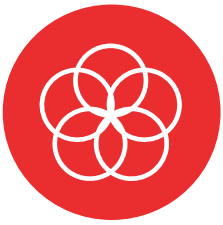
Extract information from a web page or Windows application by simply highlighting the area of interest and pressing the Collect button.



Save and archive information in a customizable manner.

Quantum Collect features:

- **Web capture** - collect a full Web page or only a selected portion of text and images
- **File collect** - collect and index any digital file; Quantum builds a semantic representation for over 256 different file types
- **Folder collect** - with one click, import an entire folder, including all subfolders and files, from a hard disk or network server
- **Email collect** - collect the body of emails, just their attachments, or both
- **Email to folder** - send emails directly to a Quantum folder
- **Structured data collect** - use Quantum to manage structured data, such as contacts and company records
- **Microsoft Office® template support** - create new Word, PowerPoint, and Excel documents in Quantum based on personal or shared templates
- **Text and voice notes** - enrich your information with written notes and audio-based comments
- **Highlights and hyperlinks** - call attention to a word or phrase by changing background color and linking text to a website, file, or folder
- **Smart classify** - use Quantum's electronic librarian for automated classification of your information
- **Confidentiality** - designate collected information as confidential so other users cannot locate or access it
- **Automatic summary** - save time by reading the semantically-generated summaries of collected information
- **Q-File & Q-Folder properties** - have the source information always at your fingertips, including the original URL or storage location, creator and time



COLLABORATE

FOR THE WORKGROUP

A robust collaboration environment that enables your organization to share and work together on projects and communities of practice.

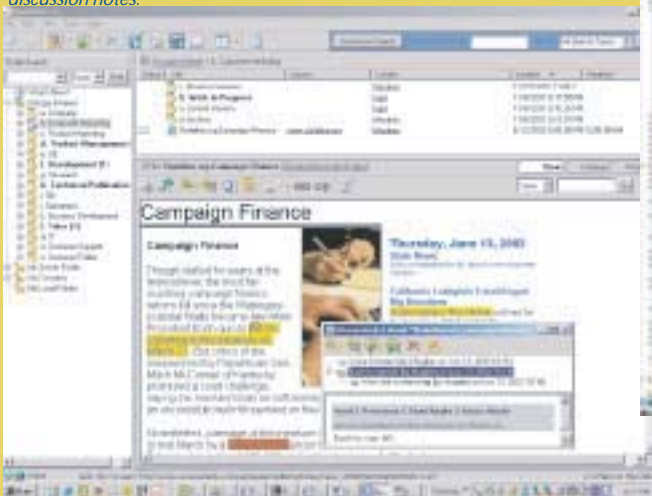
Quantum Collaborate helps enterprise organizations host and maintain a secure, working repository of information and ensures that the information is always available. By enabling information sharing and collaboration through shared folders, threaded discussions and e-mail, Quantum Collaborate enables enterprise users to efficiently distribute the kind of information needed to solve problems and make decisions. Context is captured and preserved by anchoring voice and text comments to a piece of text or an image under discussion. Teams can enrich and modify shared documents by adding highlights to important text, editing information of any file type, and linking a final document to all supporting materials.

Quantum Collaborate provides full document management capabilities including version control and the ability to revert to earlier versions. Collaborative activities also create metadata. When comments or highlights are added, Entopia Quantum's semantic engine extracts metadata to dynamically update the database of semantic profiles. This allows the social activities around content to also be used to connect people to other people, information to information, and people to information - see the Capitalize section for more detail.

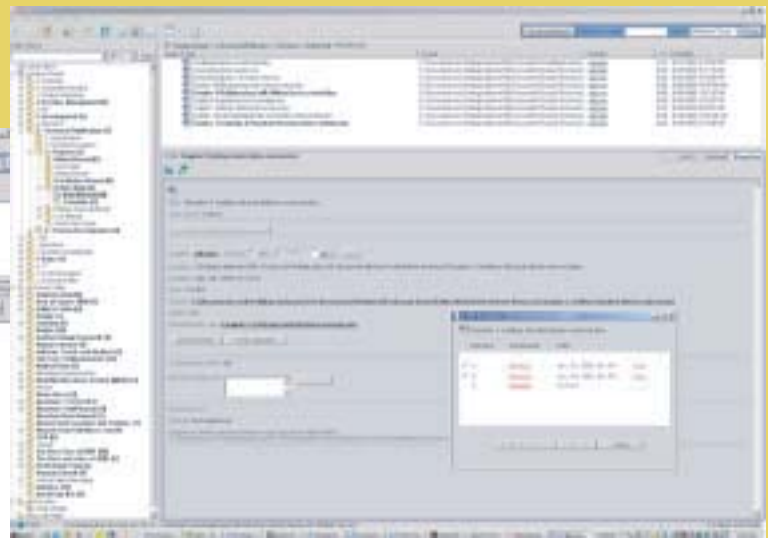
Quantum Collaborate features administrative tools, access controls, and enhanced data security. Owners of folders are empowered to create shared workspaces by inviting other users. Users can share documents via public folders or make them available to select users in shared folders. Other documents can be kept confidential by saving into a private folder.

Collaborate with others.

Share knowledge with others through shared folders and discussion notes.



Add text and voice notes, links, and highlights.



Preserve and view a complete history of Q-File versions.

Quantum Collaborate features:

- **Private or shared folder** - determine the exact level of collaboration you need
- **Public organizational folders** - make content accessible to all
- **Remote web access** - collaborate with others no matter where they are located
- **What's New Folder** - get a quick overview of activity in Quantum over time, including unread documents, comments, and invitations added
- **Access control** - choose from four levels of access control, providing varying degrees of viewing, authoring, and editing privileges
- **Send an MS Outlook® Task** - use Quantum to send a task to a colleague's Microsoft Outlook task list
- **Shared editing** - check out and edit a Q-File from a shared folder and check it back in to share edits
- **Version control and Q-File history** - preserve all versions of a Q-File and view a complete history of actions performed
- **HTML publishing** - easily publish Quantum files and folders to a portal or public website
- **Threaded discussions** - discuss information and share ideas in a collaborative manner via threaded voice or text notes
- **E-mail discussions** - use e-mail to participate in a threaded discussion, even when you are not logged into Quantum
- **Email notification** - send notifications about newly collected information, comments, or edits to other users and groups
- **LDAP/Active Directory Integration** - simplify the management of user accounts, strengthen security, and enable interoperability
- **Portal integration** - integrate Quantum into a portal application to add best-of-breed content management, collaboration, and advanced search



CAPITALIZE

FOR THE ENTERPRISE

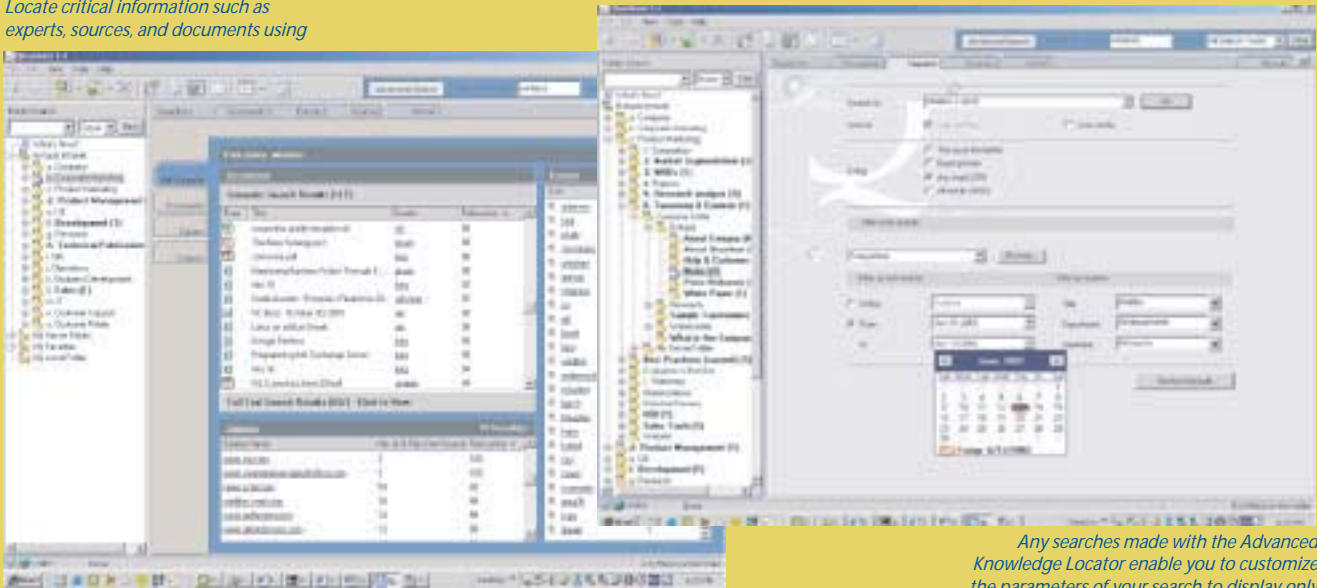
Products and services that *turn knowledge into action™*.

Quantum Capitalize features products and services that turn information into valuable intellectual capital and actionable assets for the enterprise. Integrated seamlessly with the Collect and Collaborate components, Quantum Capitalize helps organizations fully realize the potential of corporate knowledge with a single click. Individuals within an enterprise can locate relevant information at the time it is needed and as close to the business process or transaction as possible - even from inside another application such as Customer Relationship Management (CRM), Supply Chain Management (SCM), or Enterprise Resource Planning (ERP).

The core offering in this evolving suite is the Entopia Knowledge Locator™, Entopia's advanced search engine which leverages its semantic technology. The Entopia Knowledge Locator goes beyond simple search tools to provide a rich and dynamic profiling system that finds documents, sources, and experts quickly and easily - even if that information is orphaned on a hard drive. The Knowledge Locator takes full advantage of Quantum's semantic metadata to provide ranked, relevant data to knowledge workers anywhere. Most importantly, the Knowledge Locator employs real-time usage information and dynamic profiling to determine the best sources and experts available.

Capitalize on hidden knowledge in the corporation.

Locate critical information such as experts, sources, and documents using



Any searches made with the Advanced Knowledge Locator enable you to customize the parameters of your search to display only the information you need.

Quantum Capitalize features:

- **Search for documents** - locate documents relevant to a search query
- **Search for experts** - locate experts in the organization that possess expertise related to a search query
- **Search for sources** - locate sources relevant to a search query, including frequently accessed URLs and even folders resident on hard drives
- **Express Locator** - simultaneously locate documents, experts, and sources with a single search query
- **Entopia Locate Related™** - locate information in Quantum that relates to an identified document, web page, or block of text in another application
- **Express Search Results** - enhance your decision-making capabilities by displaying all relevant documents, experts, and sources in one view
- **Advanced Knowledge Locator** - apply advanced search filters, including search by file type, to locate precise documents, experts, or sources
- **Semantic search** - locate topic-related documents that are conceptually related to a search query
- **Full text search** - locate documents containing the exact keyword(s) in a search query
- **Single view document search** - view both semantic and full text search results at the same time
- **Structured data search** - locate both unstructured and structured data related to a search query
- **Stemming-based search** - locate documents containing words with similar linguistic roots (i.e. "engineering" would be stemmed to "engineer")
- **Synonym-based search** - locate documents containing words similar in meaning to a query (i.e. "car" and "automobile" would be synonymous)

WHAT ARE SOME OF THE MOST SIGNIFICANT BENEFITS OF THE ENTOPIA QUANTUM SOLUTION?



Personal Productivity

Entopia Quantum delivers easy-to-use and intuitively-designed functions that encourage the participation of all users, resulting in a rich knowledge base that is semantically mapped and indexed. This is what we call "bottom-up" knowledge management.

Respect for Privacy

Entopia Quantum gives users the opportunity to decide which information they want to make available to others.

Workgroup and Enterprise Productivity

Improve workgroup and enterprise productivity in the form of shared practices, greater cost efficiencies, better customer relations, faster sales cycles and product time-to-market, and better-informed decision-making.

Manage Structured and Unstructured Data

Entopia Quantum enables users to collect unstructured data of any file type and create forms that manage structured information.

Identify Experts

Entopia Quantum helps users to locate individuals based on their expertise in an effort to minimize work duplication, increase productivity, and inspire innovation.

A Competitive Edge

Entopia Quantum enables enterprises to harness information and knowledge, and then turn that knowledge into intellectual capital that can be tapped to make decisions to increase market share, profitability, and overall efficiencies.

Entopia Quantum Includes



Collect

- Quantum local client
- Quantum Web browser-based client

These clients provide two different ways to work with Quantum and can be used independently of each other.

Minimum System Requirements

- Windows 98/NT/2000/ME/XP
- Intel Pentium 166 MHz or higher
- 16 Bit color or higher
- 32MB RAM or more (64 MB recommended)
- 12 MB of free disc space
- Browser: Internet Explorer 5.0 or higher



Collaborate

and



Capitalize

- Entopia server software, including advanced semantic technology and embedded database

- Windows 2000 or NT Server with IIS
- CPU 800 MHz (2x1GHz recommended)
- 1GB RAM (2GB recommended)

Entopia is an innovator in the emerging field of bottom-up knowledge management. By empowering the individual first, Entopia's Quantum software facilitates personal productivity and collaboration, allowing the enterprise to capitalize on work already done. A Microsoft Certified Partner, IBM PartnerWorld for Developers partner, and member of the Oracle Partner Program, Entopia is backed by global media and communications powerhouse Vivendi Universal. Entopia was recently selected as one of "100 Companies that Matter in Knowledge Management" by *KMWorld* Magazine. Headquartered in Silicon Valley, California, Entopia has sales offices throughout the US and multiple research and development centers.



1301 Shoreway Road, Suite 302, Belmont, CA 94002, USA
Tel. 1.866.ENTOPIA or +1.650.632.0101 Fax. +1.650.802.6709
www.entopia.com

