

BUILT BY ENGRAVERS FOR ENGRAVERS.<sup>SM</sup>

2002



X E N E T E C H   S y s t e m s   &   A c c e s s o r i e s   G u i d e

## OUR MISSION

Xenetech plays a leadership role in visual communication, industrial marking and recognition by supplying the highest quality engraving systems, related products and comprehensive support. We are an extension of our customers' businesses, providing innovative, technological solutions to help them succeed. We maintain an environment where our employees, distributors, suppliers, customers and shareholders can experience growth.

## FIRST THINGS FIRST. AT XENETECH, OUR COMMITMENT TO BRINGING INNOVATIVE PRODUCTS AND SERVICES TO YOU FASTER SPEAKS FOR ITSELF:

|  |   |  |
|--|---|--|
| <b>1982</b> Developed first software with multiple plate, grid cutout, and long plate/tall plate capabilities* | <b>1993</b> Engineered and developed automatic surface sensing feature                    | rotary engravers, laser engravers and engraving software   |
| <b>1986</b> Introduced first graphics-based, mouse-driven software for engraving and signmaking                | <b>1993</b> Introduced micro-stepper electronic technology for new and existing customers | <b>2000</b> Surpassed industry-standard rotary speeds by more than 300% with Servo System Series |
| <b>1992</b> Updated entire customer base with Grade II Braille transcriber at no charge                        | <b>1995</b> Introduced the ability to hatch-fill TrueType® fonts                          | <b>2000</b> Achieved laser engraving "century mark" with speeds of 100 inches per second         |
| <b>1993</b> Introduced first Microsoft® Windows™-based engraving software                                      | <b>1996</b> Wrote first software package specifically for laser engravers                 | <b>2001</b> XGW 32 Bit Released  |
|  | <b>1998</b> Became only manufacturer to develop and manufacture a full line of            | <b>2001</b> PCI APU Board Released   |

\* Marketed as T\*U\*E\*S\*D\*A\*Y software

## CONTENTS

|  |    |
|--|----|
| ROTARY ENGRAVING SYSTEMS               | 2  |
| SERVO SYSTEM SERIES                    | 4  |
| AURORA LASER ENGRAVING SYSTEM          | 6  |
| XENETECH LASER ENGRAVING SOFTWARE      | 9  |
| XENETECH GRAPHIC WORKSTATION™ SOFTWARE | 10 |
| ELECTRONICS AND SOFTWARE RETROFITTING  | 11 |
| THIRD PARTY EQUIPMENT                  |    |
| CUSTOM ENGINEERING                     | 12 |
| ENGRAVING SYSTEM ATTACHMENTS           | 13 |
| ENGRAVING PARTS AND ACCESSORIES        | 14 |
| WEBSITE RESOURCES & E-COMMERCE         | 16 |

*We're pleased to present you with our 2002 Systems and Accessories Guide.*

*If you don't know much about Xenetech, our story began in 1986, just as the computerized engraving machine was emerging as the required tool for professional engravers. Having been in the engraving business for many years—and having written many software enhancements for engraving equipment—we believed the industry was ready for the next generation of engraving systems.*

*We've continued to grow a company that thousands of customers have come to depend on. As engravers, we understand the day-to-day demands that your internal and external customers place on you,*



## Welcome to Xenetech.

*your capability and your equipment. We also understand the need to keep your customers happy by expanding the variety of products and services you offer.*

*To meet your needs, we've built a business where innovation, customer service and overall quality are not only evident in our track record—they're entrenched in our culture. When you buy Xenetech, you get much more than capable hardware and software. You receive a sincere commitment from everyone here—the engraver who designed your software, the technicians who assemble your hardware, the shipper who packs it for shipment, the knowledgeable distributor who trains you, and the experienced customer service professionals who assist you when you call. What you receive is a partnership—a genuine commitment to work for your success.*

*While sales growth, cash flow and profitability are all important to any business, including ours, what motivates us most are the notes from satisfied customers and the thanks from customers who've had a challenge that we've helped them resolve.*

*We want to become a part of your team, and we will continue to innovate for your success. We hope you'll join us.*

*Sincerely,*

*Kathleen A. Hoffpauir, CHAIRPERSON*

*Guy S. Barone, Jr., PRESIDENT & CEO*

All Xenetech Graphic Workstation™ (XGW) software performs automatic Grade II Braille transcription with ADA compliant typefaces and logos.



**XOT Star 912** It may be tiny, but it sure is tough! This 9" x 12" tabletop model with adjustable T-slot has the durability and versatility you demand from larger systems, plus super portability at a price that's budget-friendly.



Table surface area: 9" x 12" (22.86 x 30.48 cm) • Footprint: 17.5" x 25" (44.45 x 63.5 cm) • Engraving area: 108 sq. in. (274.32 sq. cm) • Shipping weight: 116 lbs. (52.67 kg) • Maximum spindle travel: 1" (2.54 cm); Maximum material clearance: 2.75" (6.99 cm) • Includes 912 accessory pack • Call for further options and specs

REGARDLESS OF YOUR NEEDS OR YOUR BUDGET, ONE OF OUR RUGGED XOT SERIES ROTARY ENGRAVING SYSTEMS WILL HELP YOU GET THE JOB DONE RIGHT. FROM THE "TINY BUT TOUGH" STAR 912 TO THE LARGE-FORMAT XOT 2550, WE OFFER A VERSATILE RANGE OF QUALITY MACHINES, EACH BACKED BY INDUSTRY-LEADING SERVICE AND DRIVEN BY OUR ACCLAIMED XENETECH GRAPHIC WORKSTATION™ SOFTWARE: THE POWERFUL, USER-FRIENDLY APPLICATION THAT COMES COMPLETE WITH EVERY SYSTEM (SEE PAGES 10-11).

SOME MIGHT SAY WE'RE OBSESSIVE ABOUT QUALITY—AND THAT'S OKAY WITH US. WE SIMPLY WANT YOU TO BE SUCCESSFUL, AND PROVIDING YOU WITH THE BEST TOOLS TO DO IT IS A CHALLENGE WE TAKE SERIOUSLY. THAT'S WHY EVERY ROTARY MACHINE IS HAND-ASSEMBLED ON-SITE IN OUR FACILITY AND MUST PASS A RIGOROUS **242-POINT QUALITY INSPECTION** BEFORE WE SHIP IT TO YOU. IN ADDITION, EACH MACHINE IS "BURNED IN" WITH MORE THAN **40 HOURS OF RUNNING TIME** TO ENSURE THAT IT'S READY TO WORK WHEN YOU ARE.

GIVE US A CALL TODAY AND LET'S TALK ABOUT WHAT A XENETECH ROTARY ENGRAVING SYSTEM CAN DO FOR YOUR BUSINESS.

## Rotary Engraving Systems

MODULAR MICRO-STEPPING ELECTRONIC DESIGN

**XOT 1313** Big-time features in a smaller-format machine—that's the story of this "Lucky 13." Pound for pound, it's the strongest engraver in our line, a winning combination of power, performance and cost-effectiveness. It's our leading seller in the industrial markets, where engraving, routing and milling stainless steel and other difficult materials are often required.



Reverse engraved subsurface signage leaves a smooth face on signs. The addition of cut-out shapes yields a dramatic 3-D effect.

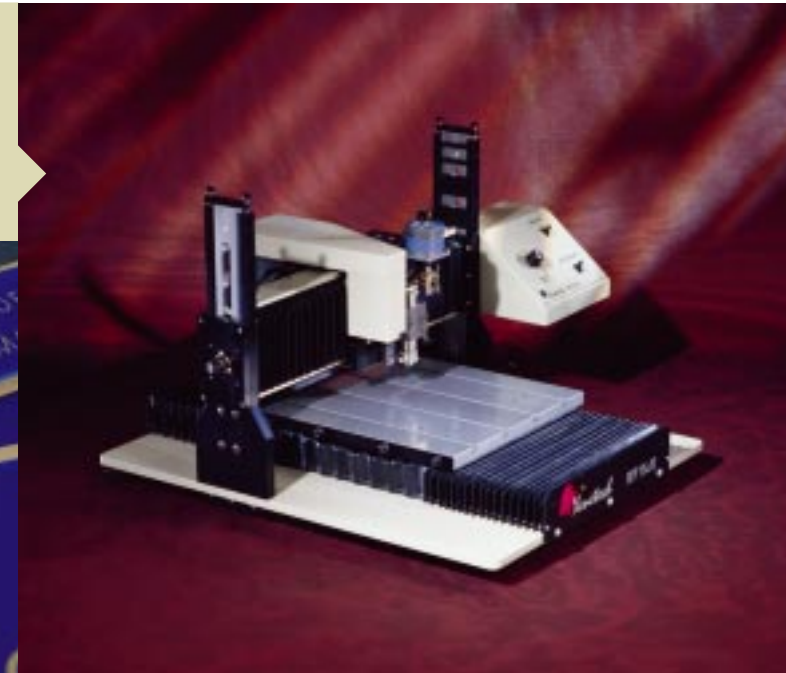


Table surface area: 13.5" x 13.5" (34.29 x 34.29 cm) • Footprint: 22.5" x 27.5" (57.15 x 69.85 cm) • Engraving area: 182 sq. in. (462.28 sq. cm) • Shipping weight: 340 lbs. (154.36 kg) • Maximum spindle travel: 2" (5.08 cm); Maximum material clearance: 7.188" (18.25 cm) • Includes accessory pack with 5 plastic cutters (see page 14) • Call for further options and specs

## A HIGHER STANDARD

Here are just a few of the standard features you can expect with every Xenetech rotary engraving system:

- Forward/backward control by character, line or plate
- DC motor speed control (*AC motor speed control optional.*)
- Longplate engraving capabilities from 12" x 126" in length to 25" x 700" in length (*varying with machine size*)
- State-of-the-art motion control system
- Multi-plate and batch processing
- Two-year limited warranty (*One-year warranty on Star 912, extended warranty available.*)
- Automatic surface sensing on all machines (*standard*)
- Graphic job printouts
- Ability to engrave a wide variety of materials
- Routing capabilities
- Networkable
- Cylindrical attachment available
- 11/64", 1/4", 4 mm and 6 mm top-load and collet spindles available (*Top or bottom loading collet spindle and metric also available.*)
- X, Y and Z-axes resolution/repeatability standard: .000313", user selectable: .000625" and .000156"
- Spindle downfeed: mode 1) fully programmable via software, mode 2) downfeed manually set via control pendant, and mode 3) automatic surface sensing for downfeed
- Spindle motor: 1/4 hp spindle motor; 14,000 rpm at spindle (*Star 912: 11,000 rpm*)

† Computer not included. APU Board plugs into your computer.

Reverse engraved and paint filled, this precise line detail is perfect for blueprint or industrial applications.



**XOT 1625** If you're looking for a mid-sized system that hits the target every time, this is the sure shot. The 1625 is a rugged, precise workhorse with the largest engraving area in its class—yet it's priced to provide an outstanding return year after year.

**XOT 2525** Our 2525 expands the capabilities of the mid-range engraving class, providing a significant step up in size over our 1625. It's a great solution for high-volume shops, or a great way to plan for growth without investing in our largest system.

**XOT 2550** Put 1,250 square inches of engraving power and technology in your hands with the 2550—the largest rotary engraving system on the market. For large-format or high-production shops, the 2550 provides all the versatility you may ever need.

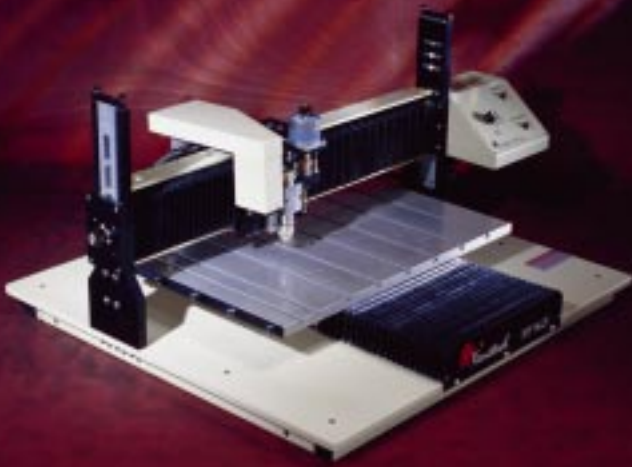


Table surface area: 16" x 25" (40.64 x 63.5 cm) • Footprint: 32" x 34" (81.28 x 86.36 cm) • Engraving area: 400 sq. in. (1,016 sq. cm) • Shipping weight: 440 lbs. (199.76 kg) • Maximum spindle travel: 2" (5.08 cm); Maximum material clearance: 7.188" (18.25 cm) • Includes accessory pack with 5 plastic cutters (see page 14) • Call for further options and specs

Table surface area: 25" x 25" (63.5 x 63.5 cm) • Footprint: 31" x 35" (78.74 x 88.9 cm) • Engraving area: 625 sq. in. (1,587.5 sq. cm) • Shipping weight: 510 lbs. (231.54 kg) • Maximum spindle travel: 2" (5.08 cm); Maximum material clearance: 7.438" (18.89 cm) • Includes accessory pack with 5 plastic cutters (see page 14) • T-slot table optional • Call for further options and specs

Table surface area: 25" x 50" (63.5 x 127 cm) • Footprint: 31" x 60" (78.74 x 152.4 cm) • Engraving area: 1,250 sq. in. (3,175 sq. cm) • Shipping weight: 640 lbs. (290.56 kg) • Maximum spindle travel: 2" (5.08 cm); Maximum material clearance: 7.438" (18.89 cm) • Includes accessory pack with 5 plastic cutters (see page 14) • T-slot table optional • Call for further options and specs

Seals can be rotary cut or laser engraved. Xenetech Graphic Workstation™ automatically creates the negative image, which is adjustable by setting paper weight value in the software. Complete shoulder depth control is set by specific point or first/last point auto-calculation.



IT'S NOT ROCKET SCIENCE. MORE ENGRAVING SPEED MAKES YOU MORE PRODUCTIVE AND MORE PROFITABLE—AND OUR NEW SERVO SYSTEM SERIES HAS ALL THE SPEED YOU NEED. CONTINUING OUR COMMITMENT TO BRINGING YOU INNOVATION FIRST, OUR SERVO MODELS COMBINE XENETECH'S TOUGH, RELIABLE TABLE CONSTRUCTION AND ELECTRONICS WITH THE SMOOTH, QUIET MUSCLE OF TODAY'S SERVO TECHNOLOGY FOR TRULY AMAZING ENGRAVING PERFORMANCE. YOU CAN'T AFFORD TO BE *WITHOUT* THE COMPETITION-BUSTING TECHNOLOGY THAT:

- Engraves up to three times faster than today's typical stepper systems (depending on job size and complexity) with significantly less machine noise and no quality drop-off
- Features continuous synchronization between the X- and Y-axis motors for increased performance
- Can be purchased new in the following XOT table models: 1313, 1625, 2525
- Can be installed on existing Xenetech systems and includes an additional two-year warranty on upgraded components
- Can be retrofitted to some other manufacturers' rotary engraving systems (call for details)
- Comes complete with our leading-edge Xenetech Graphic Workstation™ software (see pages 10-11) and industry-leading warranty

## Servo Systems Series

BLAZING SPEED WITH TRUE AFFORDABILITY

**Affordable upgrades for existing customers.** Because we bring breakthrough products and services to market so often, we also realize that upgrades must be affordable—and the Servo System Series is no exception. Due to tremendous response, we are offering the upgrade at introductory pricing, allowing you to convert your current Xenetech XOT 1313, 1625 or 2525 machine (and those of some competitors) to servo (call for pricing). And we're *proud* of the fact that this exciting new technology can still be applied to our *original* XOT ie rotary table models. ***Now that's engineering for the long-term!***

**Industry standard software.** The key to getting the most from your servo system is the software you use to run it, and Xenetech's user-friendly Graphic Workstation™ software is the industry leader. What you see on the screen (text, graphics and logos) is a visual representation of your completed engraving job. Layouts are created by using a mouse to position objects displayed on-screen and selecting commands to perform the necessary operations. Xenetech's Graphic Workstation™ runs with Windows 98, ME, NT4, 2000 and XP.



FOR PRICING, TECHNICAL SPECS OR ORDERING: 1-225-752-0225



**XENETECH 1625 SV  
SERVO SYSTEM**  
Elapsed Time:  
**2 min., 33 sec.**

**Standard Stepper  
Engraving Machine**  
Elapsed Time:  
**2 min., 33 sec.**

**Just how much time can a Xenetech Servo System save you?**  
Take the tornado image pictured right. If you ran 80 jobs like it in an 8-hour day with our 1625 SV Servo System, you'd create **more than 4.5 additional hours** in new engraving production capacity versus a standard stepper machine. That's more than **100 additional jobs** (at 2:33 per job)!



Actual engraved samples shown in plastic.

**Time is money. Make every second count.**

### Model XOT 1313 SV Specifications

**Table size and dimensions:**

- Full travel engraving area: 13.5" x 13.5" (34.29 x 34.29 cm)
- Footprint dimensions: 22.5" x 27.5" (57.15 x 69.85 cm)
- Overall dimensions: 32" x 29" x 20" (81.28 x 73.66 x 50.8 cm)
- Engraving area: 182 sq. in. (462.28 sq. cm)
- Shipping weight: 340 lbs. (154.36 kg)

**Table construction:** cast aluminum tooling plate, stationary gantry with moving T-slot; all axes ride on linear rails and bearings

Brushless servo motors on the X and Y-axes

**Spindle clearance:** base clearance 2" (5.08 cm), adjustable up to 7.188" (18.258 cm)

**Spindle downfeed:**

- Mode 1) fully programmable via software
- Mode 2) downfeed manually set via control pendant
- Mode 3) automatic surface sensing for downfeed

Programmable "Z" offsets, "Z" stroke length, multipass and dwell

**Spindles:** standard 11/64", 1/4", 4 mm or 6 mm; optional top- and bottom-loading collet spindle

**Spindle motor:** 1/4 HP DC spindle motor; 14,000 RPM

**Workholding:** two quick clamps standard with an assortment of workholding clamps and vises available for various applications

**Standard motor speed control:** regulates spindle RPMs for different materials and compensates for spindle load; also turns the spindle motor and accessories off and on via software control

**Accessory kit includes:** two quick clamps, Allen wrench set, five plastic cutters, additional motor belts, engraving table tape, lubricant, additional fuses, cutter wrench, screwdriver, ruler and plastic samples

Two-year limited warranty; extended warranty plans available

### Model XOT 1625 SV Specifications

**Table size and dimensions:**

- Full travel engraving area: 16" x 25" (40.64 x 63.5 cm)
- Foot print dimensions: 32" x 34" (81.28 x 86.36 cm)
- Overall dimensions: 43.5" x 32" x 20" (110.5 x 81.28 x 50.8 cm)
- Engraving area: 400 sq. in. (1,016 sq. cm)
- Shipping weight: 440 lbs. (199.76 kg)

**Table construction:** cast aluminum tooling plate, stationary gantry with moving T-slot; all axes ride on linear rails and bearings

Brushless servo motors on X and Y-axes

**Spindle clearance:** base clearance 2" (5.08 cm), adjustable up to 7.188" (18.258 cm)

**Spindle downfeed:**

- Mode 1) fully programmable via software
- Mode 2) downfeed manually set via pendant control
- Mode 3) automatic surface sensing for downfeed

Programmable "Z" offsets, "Z" stroke length, multipass and dwell

**Spindles:** standard 11/64", 1/4", 4 mm or 6 mm top load; optional top- or bottom-loading collet spindle

**Spindle motor:** 1/4 HP DC spindle motor; 14,000 RPM

**Workholding:** two quick clamps standard with an assortment of workholding clamps and vises available for various applications

**Standard motor speed control:** regulates spindle RPMs for different materials and compensates for spindle load; also turns the spindle motor and accessories off and on via software control

**Accessory kit includes:** two quick clamps, Allen wrench set, five plastic cutters, additional motor belts, engraving table tape, lubricant, additional fuses, cutter wrench, screwdriver, ruler and plastic samples

Two-year limited warranty; extended warranty plans available

### Model XOT 2525 SV Specifications

**Table size and dimensions:**

- Full travel engraving area: 25" x 25" (63.5 x 63.5 cm)
- Footprint dimensions: 31" x 35" (78.74 x 88.9 cm)
- Overall dimensions: 43.5" x 35" x 20" (110.5 x 88.9 x 50.8 cm)
- Engraving area: 625 sq. in. (1,625.6 cm)
- Shipping weight: 510 lbs. (231.54 kg)

**Table construction:** cast aluminum tooling plate with moving gantry; all axes ride on linear rails and bearings

Brushless servo motors on the X and Y-axes

**Spindle clearance:** base clearance 2" (5.08 cm), adjustable up to 7.438" (18.89 cm)

**Spindle downfeed:**

- Mode 1) fully programmable via software
- Mode 2) downfeed manually set via control pendant
- Mode 3) automatic surface sensing for downfeed

Programmable "Z" offsets, "Z" stroke length, multipass and dwell

**Spindles:** standard 11/64", 1/4", 4 mm or 6 mm; optional top- and bottom-loading collet spindle

**Spindle motor:** 1/4 HP DC spindle motor; 14,000 RPM

**Workholding:** Assortment of workholding clamps and vises available for various applications

**Standard motor speed control:** regulates spindle RPMs for different materials and compensates for spindle load; also turns the spindle motor and accessories off and on via software control

**Accessory kit includes:** two quick clamps, Allen wrench set, five plastic cutters, additional motor belts, engraving table tape, lubricant, additional fuses, cutter wrench, screwdriver, ruler and plastic samples

Two-year limited warranty; extended warranty plans available



Laser engraver with air assist option

FOR 15 YEARS, THOUSANDS OF CUSTOMERS HAVE RELIED ON OUR ROTARY SYSTEMS AND SOFTWARE TO DRIVE THEIR BUSINESSES. BUT TODAY, YOUR WORK DEMANDS MORE, SO WE PUT OUR YEARS OF INNOVATION AND EXPERIENCE TO WORK TO MEET YOUR NEEDS FOR SPEED, POWER AND PRODUCTIVITY. OUR RESULT IS THE LASER SYSTEM LINE YOU'D EXPECT FROM THE INDUSTRY LEADER, AND IT KEEPS GETTING BETTER.

IN 2000, OUR AURORA SERIES LASERS BECAME THE FIRST IN THE ENGRAVING INDUSTRY TO REACH THE 100 INCHES-PER-SECOND MARK, AND MIND-BLOWING SPEED IS JUST THE BEGINNING. CALL TODAY TO GET THE FASTEST 18" X 30" LASER ENGRAVING SYSTEM IN OUR INDUSTRY, STRAIGHT FROM THE INNOVATION LEADER.

## Aurora Series Laser Engraving System

THE NEXT DIMENSION IN SPEED AND PERFORMANCE



**Xenetech service and support.** An investment in a Xenetech laser engraving system is backed by a firm commitment to serve and support you in any way we can. In fact, we even think of ourselves as an extension of your business—so if it's important to you, you know it's important to us. This philosophy has helped us set the standard for service in the engraving business, and you'll notice the difference immediately. You'll see it in our people—knowledgeable, experienced professionals who provide innovative ideas and solutions every day. And you'll get it with our support products, from warranties to training to free software updates. The bottom line is that no matter the situation, we're not happy unless we've exceeded your expectations.



**Specifications** Table surface area: 18" x 30" (45.72 x 76.2 cm) • Engraving area: 540 sq. in. (1,371.6 cm) • Shipping Weight: 570 lbs. (258.8 kg) • Maximum travel: 10" (25.4 cm) • Ships with laser accessory kit (see page 14) and Xenetech Graphic Workstation™ laser software (see page 9) • Dimensions: Width 47.25" (120.02 cm), Height 41.25" (104.8 cm), Depth 31.5625" (80.17 cm) (including handle and hinges) • Call for further options and specs

FOR PRICING, TECHNICAL SPECS OR ORDERING: 1-225-752-0225



On-board control panel gives total control and view of job statistics such as, scroll-through job queue, recall job, end-of-job signal, job time statistics and more.



8-bit greyscale bitmaps import directly into Xenetech Graphic Workstation. Variable power settings vary depth of cut, texturizing the material.



Black and white photo, laser etched with paint fill on marble for a natural photo finish.



Aurora laser vector-cuts complex images. (Flexi-brass® applied to wooden surface via adhesive.)



Bottom-up engraving minimizes exposure of materials to damaging smoke buildup and residue on this rubber stamp. Complete shoulder depth and slope control is set by specific point or first/last point auto-calculation.



**Features that define performance.** An investment in a Xenetech Aurora Laser System begins with top-of-the-line performance and a wide variety of features and enhancements, including:

- Speeds (rasterization) from .001 to 100 inches per second
- 30-, 50- and 100-watt Air Cooled models
- Large 18" x 30" engraving area; 10" engraving clearance; honeycomb table
- Top-mounted control panel with adjustable table height, laser power and speed, plus pause and cancel functions
- Reengineered, state-of-the-art motion control system
- Entire unit enhanced for even greater stability and durability, improved electronics and table elevator design
- Software-controlled blower operation
- Bottom-up engraving and color-controlled power settings
- Red diode pointer for proofing and positioning beam
- Red diode fires while engraving or can fire at all times (user-selectable)
- Powerful servo motors yield faster vector and raster speeds
- Incredible power: 30-watt can cut 1" acrylic in a single pass (varies with material manufacturers)
- Motorized table height adjustment
- Dual head option
- In-progress job timer
- Quick-change lens; does not require alignment or tools
- 2.5" focal length for .003" beam diameter
- Protection from laser beam (Class I laser)
- 4-mirror design allows for better spot size and accuracy
- 57,600 BPS enhanced throughput
- Variable table focus
- Automatic multiple plate layout
- Multi-pass and software controlled auto-focus calculation
- New pulsing feature—perfect for perforations
- Convenient end-of-job signal increases time management
- Rubber stamp and auto-seal mode with auto-reverse image
- Air assist (optional)
- Cylindrical engraving attachment (optional)
- Feature-packed Xenetech Graphic Workstation™ software and tutorial user video (standard with every system)
- Ethernet capability
- Laser Cutting Table (Optional)
- Tube wattage measured at the lens

**Laserable materials.\*** The possibilities are almost endless.

- Wide variety of woods
- Acrylics
- Coated Metals
- Painted Metals
- Anodized Metals
- Glass
- Rubber
- Leather
- Marble/stone/brick
- Fabrics or Cloth
- Vinyl
- Laminated Plastics
- Plastic Film
- Paper
- Matte Board
- Press Board
- Wood/Enamel Pens
- Membrane Material
- Ceramic
- Delrin
- Melamine
- Mylar
- Fiber Glass
- And others

*\*Please consult product MSD (Material Safety Data) sheets prior to lasing any materials. Consult with your HVAC professional regarding proper ventilation.*



**XENETECH Aurora Laser**  
**Elapsed Time: 1 min., 16 sec.**  
**80% power, 100 IPS**

**Standard Laser**  
**Elapsed Time: 1 min., 16 sec.**  
**80% power, 65 IPS**

Standard XGW software vector feature used to cut-out and detail sections of model wood.

**How fast is 100 inches per second? Let's compare.**

The pictures to the right tell the story. If you ran 80 jobs like it in an 8-hour day with our Aurora Series Laser System, you'd create **more than 5.8 additional hours** in new engraving production capacity versus a standard laser machine. That's more than **252 additional jobs** (at 1:16 per job)! If your work demands world class performance and versatility, an Aurora Series Laser System could be your best bet.



Lase curved surfaces with an optional cylindrical attachment. Color applied with powdered element. Customer logo scanned directly into Xenetech Graphic Workstation. (See page 13)



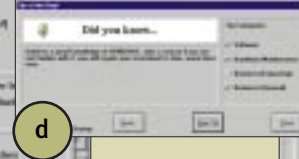
**Getting started is easy.** Getting the most from your laser system starts with knowing how to use its many features. To assist you, we've produced an informative tutorial video that's shipped with every system. From basic set-up to running different types of jobs, we've done our best to anticipate and answer any questions you may have.

**Xenetech's Laser Tutorial Video**

- a) Step-by-step details on cleaning and maintaining your laser machine
- b) Multifunction keypad control instruction
- c) Cylindrical attachment mounting and engraving demonstration

**Xenetech Laser Software** a) Custom shouldering for rubber stamps and notary seals. b) Shoulder setup dialog with automatic calculation of shoulder values. c) Control every aspect of your job with the advanced features of the laser setup dialog box. d) Tip of the Day: Customizable tips aid users with software, hardware, and business practices. e) Laser Materials Setup Dialog. Allows you to store and recall tweaked settings for various materials.

Logo created in CorelDraw! and imported into Xenetech. Aurora laser used to vector-cut each character.



# Xenetech Laser Engraving Software

DRIVING OUR SYSTEMS TO 100 IPS AND BEYOND



Powering the Xenetech Aurora Series lasers is our standard-setting Xenetech Graphic Workstation™ software, included with every system. Developed and continually updated with the specific requests of professional engravers in mind, this Windows™-based application truly delivers, including these outstanding laser features:

- 32 Bit Engraving Software
- Ethernet networking
- Exclusive technology allows for vector & raster engraving in the same job
- Customizable points of origin assist in engraving odd shapes
- Bottom-up engraving and color-controlled power settings dramatically reduce residue impregnation in porous or tacky materials
- Customizable rubber stamp and auto-seal mode with auto-reverse image
- Rubber stamp mode allows for “shouldering” tapered cuts and basic 3-D engraving
- 256 color/grayscale
- Set power, speed and engraving sequence by color
- Multiple pass/depth capability
- Data output compression
- Enhanced throughput speed
- Multiple/auto plate layout
- Multi-speed job capabilities
- Processes multiple power simultaneously on the same raster pass. This dramatically speeds throughput.
- Runs multiple material thickness in a single job. (Unit will auto-focus for various thicknesses while engraving.)
- Refocuses material to perform multiple pass vector cutting
- Saves all power, speed, 3-D, focus, job comments and multi-pass settings with each job
- Xenetech software runs the laser as an engraver or a printer yielding more functionality
- Allows the ability to enter diameter, radius and circumference values for cylindrical engraving
- Built-in grid cutout allows for batch and multi-plate processing
- Automatic beam focus adjustment in software
- Resolution options: 125/ 250/ 333/ 375/ 500/ 600/ 625/ 750/ 875/ 1,000/1,270 DPI
- Buffers/RAM: 4 MB download buffer with unlimited job queue spooled from PC
- Ability to laser halftones and grey scales
- Unlimited power settings (0-100% by hundredths)
- Multiple job buffer
- Multiple feature and text merge without batch addition
- Speed setting control from .001 to 100 IPS
- Print Driver

## Written and Developed by Engraving Professionals.

Our industry-standard engraving and signmaking software continues to exceed the expectations of professionals everywhere. We were the first to incorporate the Windows™ operating system into computer-controlled engraving, and our continuous innovation has changed the way the industry works today—and tomorrow.

The Xenetech Graphic Workstation™ was written and developed by professional engravers, and is compatible with most engravers, routers, vinyl cutters, printers and signmaking equipment. Add customer service and on-line technical support, free TrueType™ fonts, clip art and free updates for life, and it's the only graphics and job control program you'll ever need.

a) On-line help files provide comprehensive assistance with a simple point and click. b) Panel face layout is valuable in industrial applications. c) Custom hatch filling for TrueType™ fonts and logos



# Xenetech Graphic Workstation™ Software

THE FORCE BEHIND THE CUTTING EDGE

## Graphic Workstation Software Features

- Works efficiently with CorelDraw!™, Sign Lab™, CASmate™, EngraveLab™ and many other leading software applications
- Opens Meistergram® and Dahlgren® job files
- Real-time graphics and text layout
- Optimized output and cutting direction
- Choice of 40 engraving fonts, including ADA fonts (90+ available)
- Over 1,000 TrueType™ fonts
- Cutter/tool offset
- On-line technical support and help files
- Instant software updates through the Internet
- Auto Braille translation (Grade II)
- California Braille
- Multiple plate/matrix or batch processing
- Auto serial numbering
- Auto font making capability
- Panel and automatic dial making
- English or Imperial measurement
- Job pricing
- Basic 3-D engraving
- Proportional/newspaper spacing
- On-the-fly hatch fill for TrueType™ fonts
- Full-featured alignment tools
- Macro language capability
- Spell Check feature also available at an additional charge
- Imports over 35 file formats and exports over 27 file formats
- Auto layout and kerning features
- Many Microsoft® Windows™ editing features
- Auto condensing
- Load and use most vector format graphic files including but not limited to: .WMF, .DXF, .PLT, .HGL, .EPS, .CDR ver. 3.0, .AI, Mac, .PCT files, and many more
- Single WYSIWYG work screen
- Word wrap for auto line text entry
- Font change on work screen
- Vertical location of text or logo by baseline/top of line/Y-center
- Manual font kerning (two increments)
- Auto font kerning
- User-adjustable inter-character spacing
- Enter top, center or baseline position
- Enter slant angle
- Single keystrokes for many software functions
- On-board system diagnostics
- Add or subtract value to or from existing height, margins, aspect ratio or percent fills
- Software or user-defined cutter suggestions
- User-defined cut-out corner radius
- Multiple layouts in multiple mode with plate offsets
- Multiple depth/pass with increment calculator by character, line or plate
- Software outputs to engraver, vinyl letter cutter/plotter, dot matrix or laser printer
- Outputs to non-Xenetech laser engravers\*
- Multi-element alignment of two or more entities by top, middle bottom, left, center or right
- Auto layout by rations
- Automatic "dial" generation
- Merge jobs to combine two or more jobs into single batch or multiple plate
- User-adjustable plate orientation (sideways left, upside down, sideways right or reverse)
- User-adjustable ruler increments (metric or Imperial)
- Operates in Windows 98, ME, NT4, 200 and XP
- Windows Item Selector

\* Driver sold separately



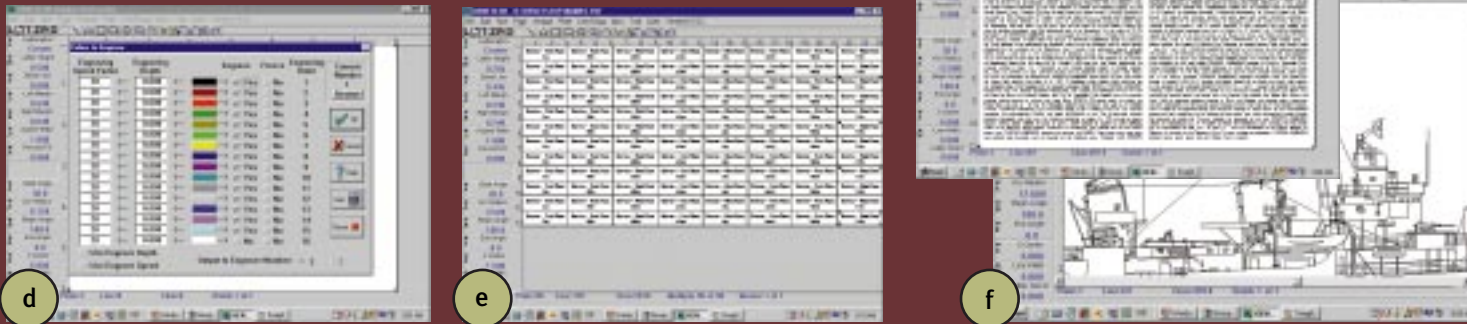
## Xenetech Graphic Workstation™ 32 Bit Windows® Based Software

Includes: XGW 32 Bit Software CD, Manuals, 1,000 TrueType™ Fonts, Optional Clip Art and Instructional Videos

Instructional Videos also sold separately.

FOR PRICING, TECHNICAL SPECS OR ORDERING: 1-225-752-0225

d) Set different engraving depths by color. e) Multiple-plate capability allows engraving a series of plates without individual plate set-ups and separate runs. f) Scanned image of U.S.S. Charles Ausburne with paragraph layout feature



Pendant Overlays and Hotkey Sheets



**Computer System Requirements** Our minimum and preferred computer system requirements vary, based on the nature of the work you will be running. Please feel free to have your reputable local dealer contact us regarding specifications before you purchase a new system, or attempt to run our software on your current system.

**Optional Features**

- Raster (bitmap) to vector conversions
- Xenetech scanning and bitmap editing package
- Depth control by color capability
- On-the-fly hatch fill for logos, etc.
- Over 2,000 clipart images
- Full range of vector drawing and editing tools including: straight line, arc, circle, ellipse, free hand drawing, rectangle, round cornered box tools, node edit, section cut and section join tools
- “Explode” features allows you to break apart an existing vector/line art graphic or font character for editing
- Cutter path sort routing to optimize speed of cutting
- Hatch fill any closed shape and modify the hatch fill parameters
- Software ships with BitmapPro, a complete bitmap scanning and editing interface that includes:
  - Speckle removal
  - Bitmap rotation in one-hundredth of a degree
  - Auto straightening or squaring
  - Many choices of dithering and grayscaling
  - Load and save virtually any raster (bitmap) file
  - Preview scan a whole page, then select to scan only a portion of the page
  - One key stroke moves the image into the standard Xenetech work area.
- Bitmap dithering

# Electronics and Software Retrofitting

*Revitalize your table with Xenetech's micro-stepper and servo controllers at affordable prices.*



**Electronics Retrofitting** Motor Power Unit, Pendant, APU Cable, Table Cable and APU/PCI Board

Ever wish you could lock into the latest engraving technology without plunking down another big investment? With Xenetech's revolutionary Microsoft® Windows™-based software, servo or micro-stepping electronics and your existing table, you can! Xenetech works with most of today's commonly used tables, including: Suregrave®/Dahlgren®, New Hermes® (including Orbitor®), Newing Hall®/Domiteaux®, Meistergram®/H-Square®, Scripta®, Vision®, Horizon® and many more!

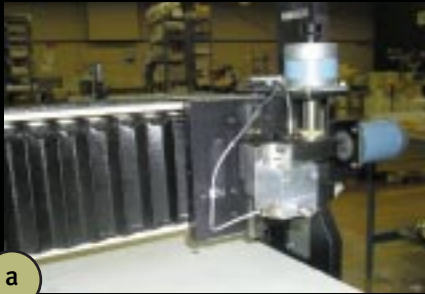
Designed and developed by professional engravers, Xenetech's industry-leading Graphic Workstation™ software sets the standard for precision and ease of use. It works with leading software including Corel Draw!®, Sign Lab®, CASmate® and more, loads Super-Pro® jobs, Meistergram® jobs and maintains your existing logo library by conversion to Xenetech format. (Additional software may be required.) Our electronics feature a modular design, two-year warranty and full engraving job control (including pause and back-up line and character).

Buying Xenetech software or electronics also means you're set for the long haul. Should you ever need or want to replace your table, our software works with all Xenetech rotary and laser systems, while the electronics work with our 1313, 1625, 2525 and 2550 engraving tables. It's a cost-effective investment in quality that simply can't be beat. Call us today for more information.

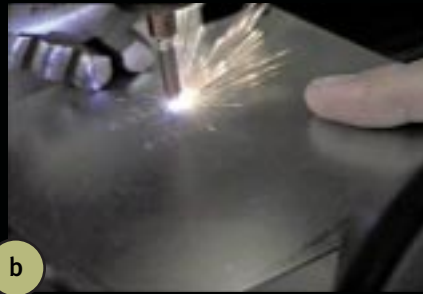
At Xenetech, research and development is the lifeblood of our commitment to bring you better products and services when and where you need them. Now, you can put our R&D team's expertise to work for you with custom engineering services. Do you need a new system specially outfitted for a specific job? Is there a special feature that would make our software more productive for your business? These are the kinds of challenges a Xenetech custom engineering solution is designed to handle.

Three great examples of customer engineering recently brought to the market are the Xenetech Etcher, Xenetech Z-axis Indexer and 90° Diamond Attachment. The etcher works on flat or round materials and produces deep, dark etchings on a variety of difficult-to-mark metals—much more distinctive than traditional engraving or diamond dragging. The Z-axis indexer precisely rotates the cutting tool to a specified degree angle for cutting—excellent for jewelry applications, wood carving and any job where directional cuts are desired. The 90° Diamond Attachment uses drill bushings with a spring loaded diamond head for the engraving stylus which allows engraving on the side of objects.

**Xenetech 90° Diamond Attachment and Z-axis Indexer** a & b) The 90° Diamond Head was designed for engraving on the sides of oversized objects not accommodated by traditional material clearance. c) Indexer Attachment mounts to existing z-axis. Spinning circular blade allows for angled cuts. Blade rotates to the direction of the cut for precise, angled cutting.



## Custom Engineering

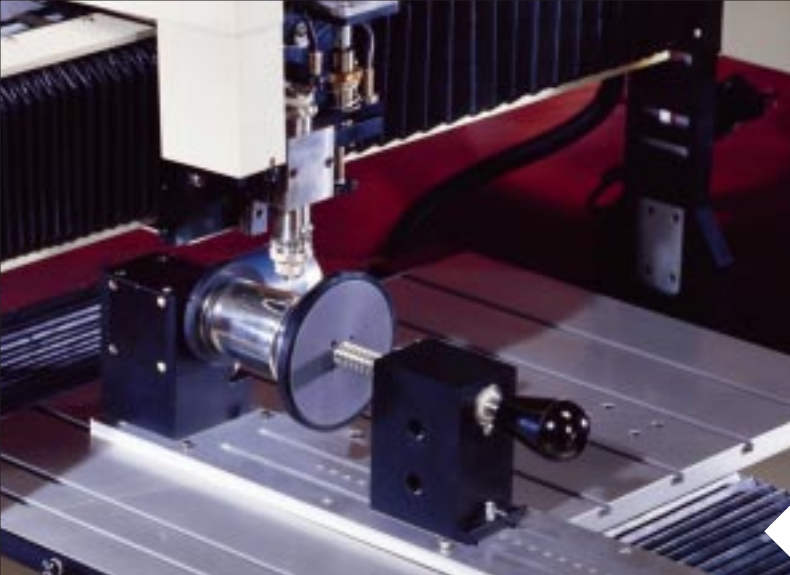


**Xenetech Etcher** a) Special chuck allows for etching on materials of various thickness—flat or circular b) Low current, proven safe c) Marks darker and more readable than traditional “drag” engraving

**2550 Dual Head with 1625 T-slots and No-slip Timing Belt**  
Dual head available on 912 on up

**Table Stand with Locking Casters**  
Available for 1625, 2525 and 2550





Beat your competition to the punch! Expand your business's capabilities with our line of versatile attachments. Developed with customer input and tested by our own engineers, these valuable add-ons let you customize your new or existing system to perform many new tasks. If you have any questions about compatibility with your machine, just give us a call.

Rotary Cylindrical Attachment available on stepper and servo models: 1313, 1625, 2525 and 2550. This attachment allows engraving on mugs, glasses and other cylindrical items. It can accommodate sizes up to 6.75" in diameter and 13.75" in length. The fixture is capable of engraving a full 360° around an object. Optional 3 Jaw Chuck allows the holding of smaller items like pens, PVC pipe, copper pipe, etc. from .125" diameter by 13.75" in length.

Engraved with an XOT ie table with a spiral cutter on clear acrylic for 3-D effect.



## Engraving System Attachments

Award-winning customer sample engraved in 1/4" brass with XOT 2550



Laser Cylindrical Attachment (optional) allows engraving on mugs, glasses and other cylindrical items. It can accommodate sizes up to 6.75" in diameter and 13.75" in length. The fixture is capable of engraving a full 360° around an object.

## XeneteXTRAS

**Training** We want you to make the most of our continuous innovations. We've produced a variety of hardware and software training videos to help you get started on the right foot. We also offer regular user's clinics at tradeshow and at various locations across the country.

**Equipment Financing** With our flexible financing options, owning a Xenetech rotary or laser engraving system is now more affordable than ever. Call us and find out how easily the power and productivity of a Xenetech machine can be yours.

**Emergency Service and Support** We know that time is money, so we've established a weekend and holiday emergency technical support line to solve any problems you may have. For your convenience, Spanish-language customer support is available during weekdays. **Digital "Weekend & Holiday" Pager (225) 979-5346**

**Tips at Your Fingertips** Located within the Xenetech Graphic Workstation™ software are optional Tips of the Day, launched when the program is opened. User-selectable categories include software, hardware/maintenance, engraving business tips, and general business tips. Selecting "More" gives a further explanation of the tip.



**Belts** 912 Spindle Belts, Small Belts, Large Belts, Endless Nylon Motor Belts (*Western™ and Meistergram™ Belts*)

GIVING YOU THE RIGHT TOOLS TO DO YOUR JOB IS IMPORTANT TO US. XENETECH ENGRAVING PARTS AND ACCESSORIES ARE MADE FROM HIGH-QUALITY MATERIALS, COME COMPLETE WITH CUSTOMER SERVICE AND SUPPORT, AND ARE BACKED BY OUR STANDARD PARTS WARRANTY.

**Xenotech Monogrammed Logo Shirts** Denim, Golf and T-shirt. Call for prices and sizes.



## Parts and Accessories



**Standard Accessory Pack** Includes: Cutter Wrench, Xenotech Screwdriver, Lubricant, 1" Hex Knob, 5 Plastic Cutters, Engraving Table Tape, Replacement Belts and Hex-Key Set (*Items can be purchased separately. XOT 1313 and 1625 come with Table Clamps #1 & #2.*)



**912 Accessory Pack** Includes: Cutter Wrench, Xenotech Screwdriver, Lubricant, Engraving Table Tape, Fuses, Wire Mount, Replacement Belt, Table Risers and Hex-Key Set (*Each item can be purchased separately. Table Clamps #1 and #2 included.*)



**Laser Accessory Kit and Optics Cleaning Kit** Includes: Lens, Cotton Swabs, Denatured Alcohol, Lubricant, Allen Wrenches, Lens Cloth, Fuse, Focus Tool, Power Cord, Connector Cable and Firmware Diskette

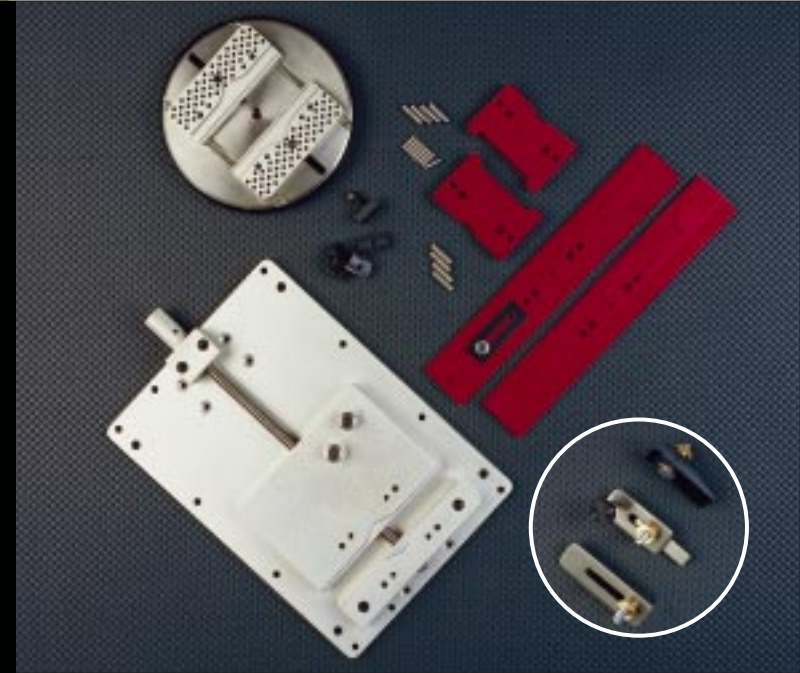




**Spindle Accessories** 6" Top Load Spindle, 6" Collet Spindle, Additional Collet, Additional Drawbar, Nosecone, Pointer Set

**Replacement Cables, Components and Parts** Pendant Switches, APU Cable, Table Cable, Replacement Knob, Table Interface Board, APU Board, Test Box, Gender Changer, (*Inset photo*) Standard Proximity Sensor, 912 Proximity Sensor, XOT ie Limit Switches, Leadscrew Nut, XOT ie Leadscrew Nut, XOT ie Tension Spring

**Cutters, Burnishers and End Mills** Call for sizes or visit us on-line for a full listing.



**Replacement Spindle Motor, Motor Brushes and Motor Brush Housing Caps** Call with questions about specific motors for your machine.

**Burnishing Accessories** 1 1/64", 1/4" and 4 mm and 6 mm Burnishing Adapters, Diamond Drag Adapter Kit, Replacement Diamond Tips

**Vises** Speed Vise,<sup>®</sup> Self-Centering Vise (patent pending), Pen & Seal Jig, 3-Medallion Jig, Dowel Pins, T-Nuts  
*(INSET PHOTO)* **Clamps** Clamp #1, Clamp #2, Pivot Clamp



**Shears** 12" Accu-Cutter Table Top Shear (Specify Metal or Plastic)

FOR YEARS, XENETECH HAS BROUGHT YOU THE LATEST IN ENGRAVING TECHNOLOGY FIRST. NOW, WHEN YOU LOG ON TO [WWW.XENETECH.COM](http://WWW.XENETECH.COM), YOU CAN DO BUSINESS WITH US EVEN FASTER—24 HOURS A DAY, EVERY DAY. OUR NEW E-COMMERCE PORTAL—THE FIRST BY AN ENGRAVING INDUSTRY MANUFACTURER—IS THE BEST WAY TO MAKE YOUR CONNECTION TO THE FORCE BEHIND THE CUTTING EDGE.

## Xenetech Website Resources & E-Commerce

DOING BUSINESS WITH XENETECH JUST GOT EASIER.



**Vacuum Chip Removal System Complete** Vacuum Chip Removal System, Vacuum Chip Removal Foot, Vacuum Hose

(INSET PHOTO) **Vacuum Foot** Enlarged for detail

**Get it all on-line!** [www.xenetech.com](http://www.xenetech.com) is your complete, 24-hour-a-day source for:

- Product information
- Equipment & accessory purchase
- Company news
- Technical support
- Software updates
- Trade show and seminar schedules
- Distributor locations
- Tips and tricks
- FAQ's
- And much more!

**Order any Xenetech product with the click of your mouse.**

Literally anything we manufacture and sell can be viewed and purchased on-line with VISA, MasterCard or American Express, including:

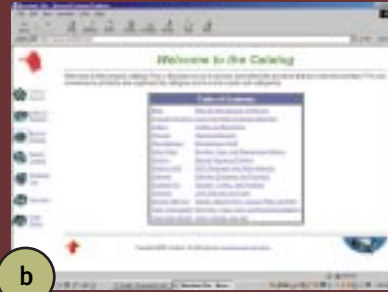
- Full line of engraving accessories including cutters, belts, lubricant and more
- Cylindrical attachments; etcher and indexer attachments
- Industry-leading Xenetech Graphic Workstation™ software
- Our acclaimed rotary (stepper and servo) and laser engraving systems
- Direct access to Rowmark® plastics
- And much more!



a) Secure business-to-business log-on allows full control over your account. b) View our catalog by category or type in the item you want. c) Easily narrow your search down to the specific part you need. d) Detailed photo of your item ensures order accuracy. e) Secure checkout protects your information for transfer.



a



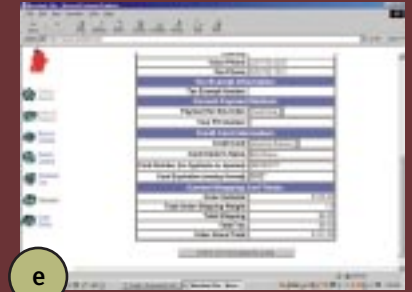
b



c



d



e

*Call today to set up your Xenetech E-Commerce account!*

**Our powerful features make it easy for you.** Our site uses state-of-the-art e-commerce technology to assist you and keep you informed:

- Order Confirmation: Your order is confirmed via e-mail just minutes after you complete it.
- Shipment Confirmation: Lets you know exactly when your order was shipped, complete with all necessary tracking information
- Contact Info Updates: Once you log in, changing your shipping and e-mail address is simple.
- Secure Site: Feel comfortable with our tested, dependable credit card encryption system.
- Account Histories: Review your purchases for up to three previous months.
- Search Feature: Find the exact product you're looking for quickly and easily.

**Get quality Rowmark® plastics here, too!** Rowmark produces the plastic sheet industry's largest offering of colors, gauges and surface textures. Engravable, laserable and routable Rowmark materials are the professional's choice for high-quality message delivery. Rowmark offers exciting options for your exterior and graphic applications and fabrication needs in a range of textures and finishes. Purchase whatever you need from [www.xenetech.com](http://www.xenetech.com) and it will be shipped to you directly. (Minimum order \$20)



Reverse-engraved image on glass to create smoky effect on the smooth side.





12139 AIRLINE HIGHWAY ▶ BATON ROUGE, LOUISIANA 70817

PHONE 225-752-0225 INTERNATIONAL FAX 225-752-1321 DOMESTIC FAX 1-800-XENETECH WEBSITE: [www.xenotech.com](http://www.xenotech.com) E-MAIL: [sales@xenotech.com](mailto:sales@xenotech.com)