


WorldEmergency®



The Watchmen Program



WorldEmergency®

WorldEmergency will set up emergency disaster command information centers in every major city throughout the United States. These portable centers will contain all of the local & federal authorities, working together, side by side, to help deter and stop potential threats of terrorism. Emergency kits and medical supplies will be in storage for a percentage of citizens within the city. The Police & Fire Departments, Search & Rescue Teams, FEMA, Homeland Security, the CDC, & other agencies will give help and understanding to citizens in every major city, providing information on what to do and how to do in a terrorist attack or threat, and also lending peace of mind.

Info Center	Police Dept.	Jail Unit	Fire Dept.	FEMA Unit	Homeland Security	CDC	CPR Center	Security Staff	Search & Rescue	Bathroom Unit	Kitchen Unit
-------------	--------------	-----------	------------	-----------	-------------------	-----	------------	----------------	-----------------	---------------	--------------

**Phone: (888) 349-0320 - Fax: (888) 819-9305 - worldemergency@mail.com
www.worldemergency.com - 686 S. Arroyo Pkwy. #39 Pasadena, CA 91105**

Introduction

WorldEmergency designs and manufactures emergency disaster equipment for earthquakes, fires, floods and civil unrest. Our Development Department manufactures portable facilities such as homes, offices, schools, communication centers, jail detention units, food and purified water centers, and hospital emergency medical units. WorldEmergency builds these and many other facilities to fulfill and perform the function of the customers' need. We can place an Emergency Disaster and Information Center starting in each of the major cities down to the smallest town and suburbs. The Emergency Information Center will be multi-functional stocking the vital information from the government and other agencies concerning what, and how to do, in case of terrorist attacks, or any potential emergency disasters - natural or man-made. It will also serve as a satellite communication center, giving family members an opportunity to communicate with their loved ones they are concerned about. These centers will also warehouse all the necessary emergency equipments proposed for the Homeland Team and the FEMA Team, stocked for the percentage of residents in each area which is covered by that particular emergency center.

WorldEmergency Watchmen Program

The WorldEmergency Watchmen Program is a comprehensive plan that unites all the essential federal and local agencies, forming one multi-functional emergency disaster and information center. These centers will be placed in every major city throughout the United States. Providing an ever-present help in regards to terrorist threats or attacks as well as receiving and giving vital information, and updates to the citizens within those given cities and their surrounding communities.

The federal agencies such as Homeland Security, FEMA, Health & Human Resources (CDC), together with the local agencies such as the Police Department, Fire Department, Search & Rescue Teams will coordinate their efforts together sharing vital information to stop and deter potential threats. Other facility units will complete the center, such as an information center, as well as the CPR Training Center along with an emergency equipment and supply storage unit. United together these federal and local agencies will complete the Emergency Disaster Center.



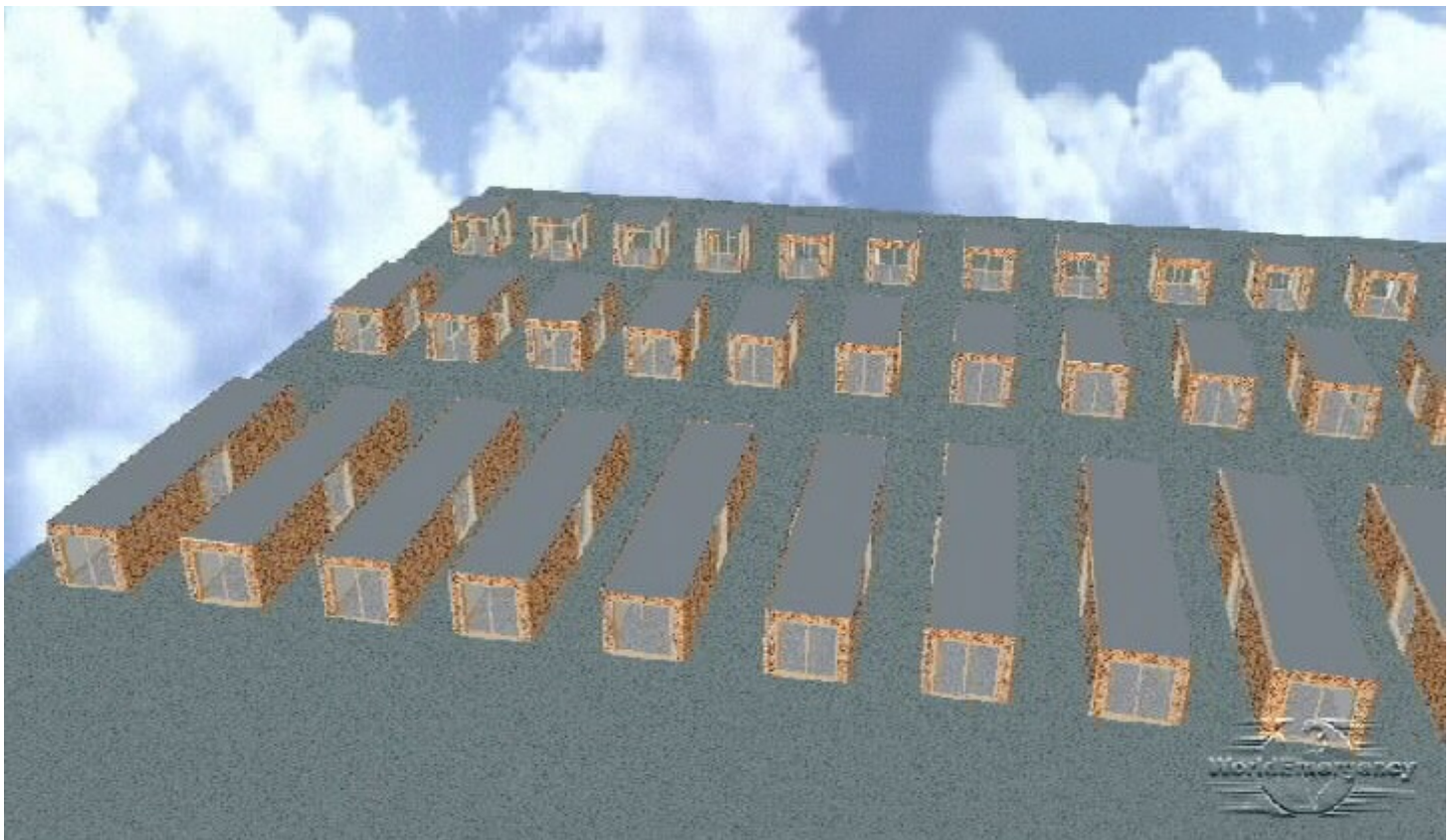
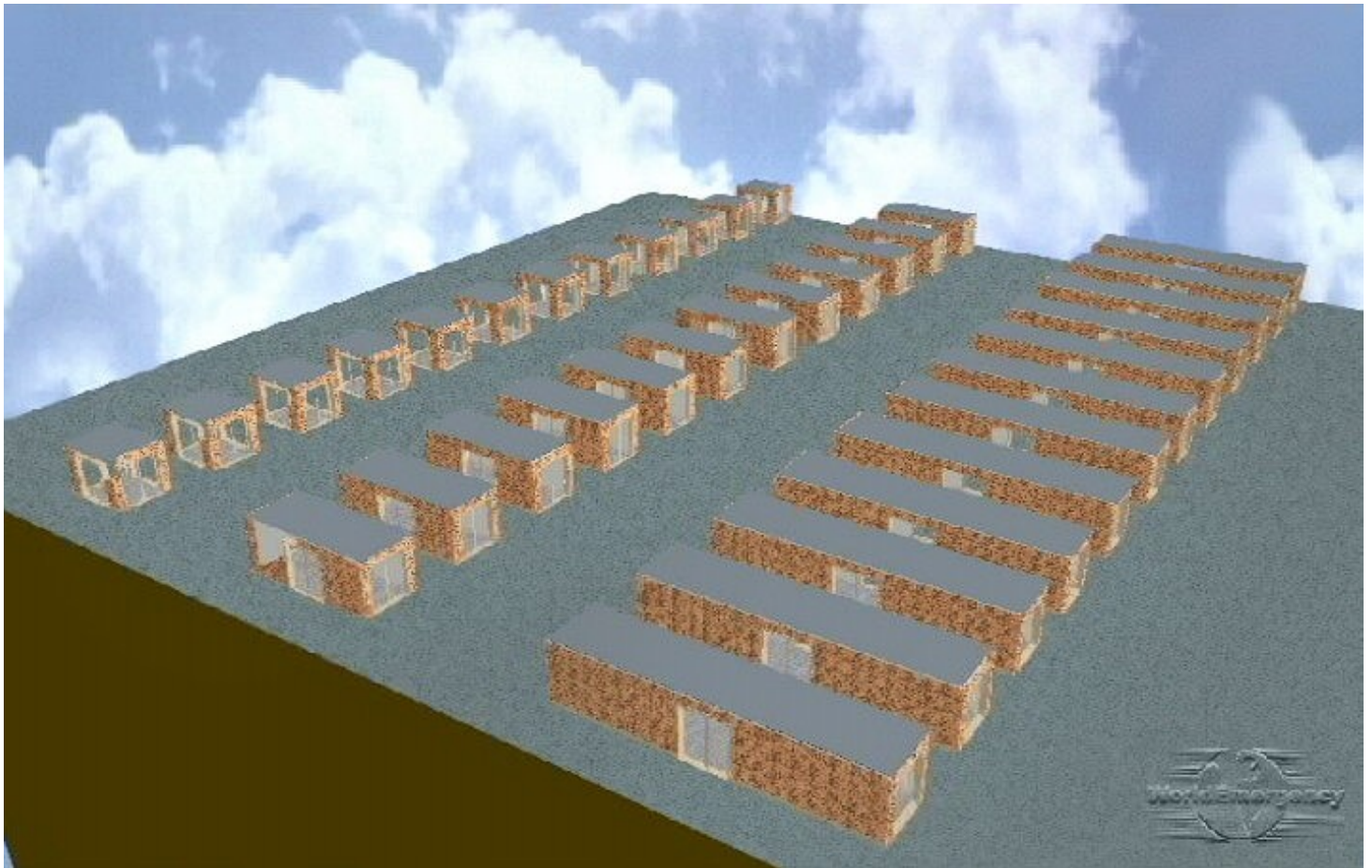
Every department agency, whether federal or local, will have their own individual office side by side, forming one single building.

Portable Design & Flexibility

All WorldEmergency shelters are designed to withstand about 8.5 size earthquakes without suffering any major structural damage and about a million pounds of pressure from a hurricane or typhoon. They provide a great deal of benefits and conveniences. All facilities are multi-functional and portable. They can easily be transported by a truck, a train, or a shipping vessel because they are designed with a solid shipping containers' steel foundation, which universally fits and adapts to all transportation systems worldwide. Moreover, we can operate all electrical equipments and appliances within these facilities without being hooked up to any outside local power source.

Basic Blueprints

The ESP Monolith System	Emergency Disaster Info. Brochures & Flier Storage	Unit 1 Information & Satellite Communication Center
The ESP Monolith System	Police Tactical Gear Storage	Unit 2 Police Department
The ESP Monolith System	Crowd Control Equipment & Restraint Supply Storage	Unit 3 Jail Detention Center
The ESP Monolith System	Emergency Disaster Kits & Fire Equipment Storage	Unit 4 Fire Department
The ESP Monolith System	Search & Rescue Equipment & Rescue Devices Storage	Unit 5 Search & Rescue Team
The ESP Monolith System	Emergency Disaster Supplies, Equipment, & First Aid Kits Storage	Unit 6 Security Staff & Volunteer Office (Optional FBI)
The ESP Monolith System	Emergency Disaster Supplies & First Aid Kits Storage	Unit 7 Homeland Security Team
The ESP Monolith System	Emergency Disaster Supplies & First Aid Kits Storage	Unit 8 FEMA Team
The ESP Monolith System	Medical Supplies, Vaccines, Antibiotics, & First Aid Kits Storage	Unit 9 Health & Human Services Department (CDC)
The ESP Monolith System	CPR Training Aids, Equipment, & Supplies Storage	Unit 10 CPR Training Facility
The ESP Monolith System	Toiletries, Cleaning Solutions, & Disinfectants Storage	Unit 11 Bathroom & Shower Unit
The ESP Monolith System	Food, Kitchen Aids, Cleaning Solutions & Disinfectants Storage	Unit 12 Kitchen & Catering Unit



ESP Monolith System

The WorldEmergency ESP (Energy Solar Power) Monolith System provides all the electrical powers needed. This portable power system that we have designed can operate your entire home, office, school, or any facility 24 hours a day, free of charge. There is never an electrical bill because it operates all these facilities with its own portable power source.

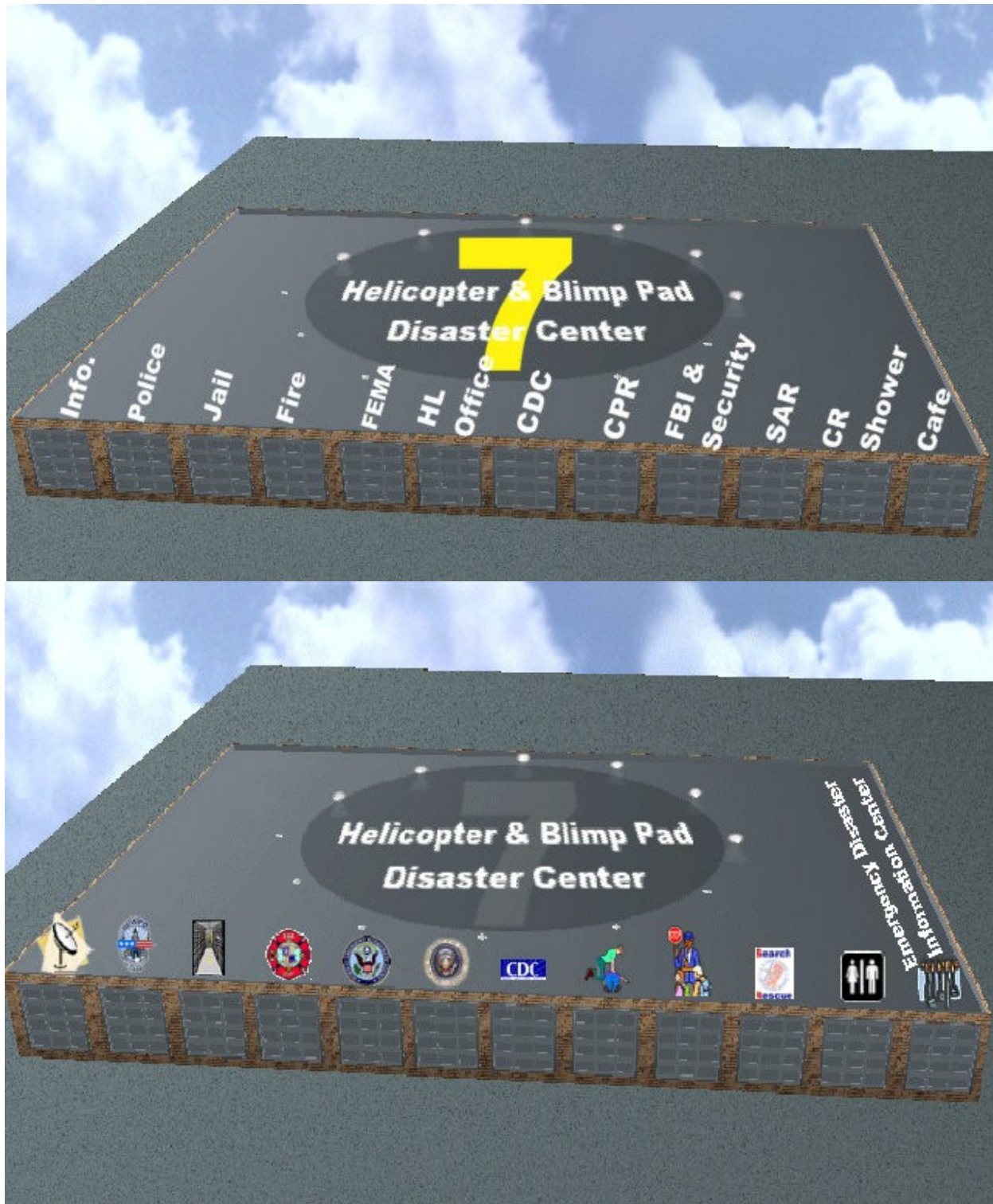
These portable offices are about 320 square feet each, and are placed side by side, forming one complete emergency center. According to the needs of each agency, centers can be expanded to accommodate their operations. This is the flexibility of the centers. They can be installed and removed at a moments notice within a few hours.

A jail detention unit will also be part of this center which will prove very beneficial for those unruly persons that need to be temporarily confined, after which when time permits, they can be transported to a more secure local facility.

All emergency information centers will be totally connected via telephone, video, and satellite computer systems, giving each center immediate ability to alert other areas of their status. This unit will be designed with bulletproof sheeting to protect the occupants and their equipment. All facilities can be structured with this added protection.

Completing the emergency center will be a bathroom and shower facility and catering kitchen units. These units can be built to supply the agencies that are operating within them or equipped to handle the citizens designated for it in that area where there is an emergency.





Design & Set Up of Information Centers

The complete Emergency Disaster Information Center will contain a Police Department office, a Fire Department office, a Search and Rescue Team office, Homeland Team office, FEMA team office, and Health & Human Services (CDC), two warehouses for emergency equipment storage - one for each federal and local agency. Also bathroom facility and showers facility, a catering and kitchen unit, jail detention unit, and communication/information center, as well as the CPR Training Center. This will be a twelve facility unit built side by side, excluding the backup storage facilities along with the power units.

Plan Function & Locations

All Emergency Disaster Information Centers will be set up at local hospitals, stationed on open parking lot facilities. These strategically placed emergency centers, on or near hospital property, are a vital step towards communicating and working with these health institutions - sharing critical information together to assess the needs of that particular community within a crisis period.

The enormous benefit between the hospital and emergency disaster center will alone move the hospital officials to share space free of charge. WorldEmergency will negotiate with all property owners to contract facility space for the centers.

Other property locations should be used, such as Lowe's Department and Home Depot stores. These facilities give great flexibility for the local communities to have easy access to the information and CPR training facilities.

Security Personnel Maintaining The Facility

WorldEmergency is affiliated with Team Security Services, which will maintain the security and surveillance of all centers at no extra cost to the government. We have thousands of trained security personnel that will be able to operate the information and communication centers. The personnel will also maintain the emergency disaster equipment supplies, as well as being the temporary eyes and ears for the local authorities. Again, this vast security staff will be paid by the WorldEmergency and Team Security but working under the federal guidelines of the government.

This security staff will be an additional help and benefit to all local authorities and neighboring communities where the Emergency Disaster Centers are placed. Here are some basic scenarios. If there is a flood, fire, or earthquake, the security team will help close off and secure sections affected, direct, and even help transport citizens to safe designated areas. If there are terrorist threats or attacks, the security team can help warn neighboring citizens door to door, if need be, giving them vital information and even emergency supplies or protection kits that are needed.

The security service's operational functions of the Emergency Disaster Centers will prove to be an irreplaceable benefit for the efforts regarding Homeland Security and the Health & Human Services Department. Again, it will cost nothing extra to the federal government, unless other functions and directions beyond duty, is given by the government agencies such as Homeland Security or FEMA.

Citizen's Corp. Volunteer Staff Training

Moreover, Team Security can help recruit thousands of volunteers to help in emergency disaster situations that are overwhelming the system. This service will be paid for by WorldEmergency operating corporations in this nation and around the world.

The training facilities will be operated by volunteers from the medical profession, activating and enhancing the President's proposal with regards to the Citizens Corp. program. CPR classes should operate twelve hours a day, from 10 AM to 10 PM - six days a week.

Information Center

The information center will also be staffed by volunteers utilizing the Citizens Corp. program. This facility should operate 24 hours a day, 7 days a week. The information center will uniquely enhance the entire operation of these emergency disaster centers. Local citizens will receive and bring vital information which will promote another of the President's plans in regards to the information and reward program.



Homeland Security Color Code Alert System/Amber System

Homeland Security Color Code System will be set up as an illuminated billboard sign alerting the public concerning the current emergency status of the nation, particularly in a given city area. This is beneficial because other areas of the country may be in different emergency alert color statuses. This sign system will be placed on top of the Homeland Security office.

The Amber Alert System will also have an electronic banner that will alert the public on who is missing, giving important identification and other vital information such as what to look for. This sign system will be placed on top of the Information Center.

Contents of Facilities



All office facilities will be designed in command center operational layouts. Each office will include 4 laptop computers along with 4 multi-functional printer/fax/copiers. Two satellite television monitors (with all local and cable channels nationwide, and international news programs as well) 1 high-speed laser color copier with full attachments (such as correlating and binding of brochures/fliers). All office equipment will be state of the art name-brand quality. Also, two command center style desk consoles. 8 office chairs, 4 file cabinets (each with 4 drawers) 2 ceiling fans, 1 floor model air conditioning system and 1 dual air filtration system with ionization. Each facility will be bulletproof, all walls and ceilings.



One Complete Center

Twelve operational facilities complete one Emergency Disaster Information Center: Information & Satellite Communication Center, Police Department, Jail Detention Center, Fire Department, FEMA Team, Homeland Security Team, Health & Human Services Department (CDC), CPR Training Facility, Security Staff & Volunteer Office, Search & Rescue Team, Bathroom & Shower Unit, Kitchen & Catering Unit. Also 12 storage units (20 ft by 8 ft = 160 sq ft each) stocked with emergency disaster equipment supplies, also vaccines, antibiotics, and other vital medical aids. Attached are 12 ESP (Energy Solar Power) Monolith System Units (10 by 8 = 80 ft each). These facilities complete one command center at a cost of \$1,900,000.



Manufacturing Time

All Emergency Information Centers will take approximately seven weeks for each center to be completed. Creative Development construction crews will start manufacturing first within the three major cities - New York, Chicago, & Los Angeles. Each state should have no fewer than four emergency disaster centers, and no more than twelve. Construction crews will be multiplied dramatically to finish the task in the earliest possible manner.

We look forward to setting up a meeting with you, discussing our proposal, and giving you a detailed presentation. Please call us at your earliest convenience, giving us dates and times of when we can meet with you. Our phone number is (888) 349-0320. You may e-mail us at worldemergency@mail.com. Our emergency offices are available 24 hours a day. Thank you very much.

Sincerely,

Chuck Thompson, Director