



# SHAW-LUNDQUIST ASSOCIATES INC

## REPRESENTATIVE RETAIL PROJECTS

This lists selected retail projects completed by Shaw-Lundquist Associates, Inc. With experience in both Retail Tenant Buildout and Retail New Building, we are able to meet all our clients' retail construction needs.

PROJECT/LOCATION	ARCHITECT/ENGINEER	CONTRACT/COMPLETION
Prairie Restorations Retail Center and Office Scandia, MN	Paul Meyer Architects	\$900,000 November 2006
JC Penny Burnsville Store Complete Remodel Burnsville, MN	GSR-Andrade Architects	\$1,328,000 October 2003
Wells Fargo Prosperity Branch St. Paul, MN	HTG Architects	\$1,268,000 November 2001
Applebee's Neighborhood Grill & Bar Inver Grove Heights, MN	Wolfgang Doerschlag Architects	\$747,000 November 1997
Dunn Bros. Coffee Shop Minnetonka, MN	Smart Associates	\$88,500 February 2000
Cobalt Coffee Shop Brooklyn Center, MN	Buetow & Associates	\$135,000 January 2004
Aveda Corporation Retail Space Renovation Minneapolis, MN	Bentz, Thompson, Rietow, Inc.	\$129,100 June 1991
United States Postal Service Twin Cities Metro Hub Minneapolis, MN	CM Architecture	\$4,602,000 October 1999
United States Postal Service Retail Service Center Apple Valley, MN	Rafferty Rafferty Tollefson	\$2,490,000 September 1998
United States Postal Service Retail Service Center Burnsville, MN	Adkins Associates/Shaw-Lundquist Team	\$3,095,000 July 1996
Como Park Visitor and Education Resource Center St. Paul, MN	Hammel, Green & Abrahamson, Inc.	\$16,530,000 December 2004
Fort Snelling Visitors Center Minneapolis, MN	Elness Swenson Graham Architects	\$2,755,000 July 1982
National Sports Center Event Center Blaine, MN	Rozeboom Miller Architects	\$4,217,000 May 2005





# SHAW - LUNDQUIST ASSOCIATES INC

## REPRESENTATIVE MULTIFAMILY HOUSING PROJECTS

This lists selected multifamily housing projects under construction and completed by Shaw-Lundquist Associates, Inc. We have a deep understanding of the Multifamily Housing sector as demonstrated by the variety of project sizes and types shown here. Our expertise greatly benefits our Multifamily Housing clients.

PROJECT/LOCATION	ARCHITECT/ENGINEER	CONTRACT/COMPLETION
Terra Springs Buildings 1-4 Stillwater, MN	J. Buxell Architects/Pope Architects	\$26,645,000 December 2005
The Retreat at Garden Gate Woodbury, MN	DJR Architects	\$11,130,000 January 2006
PPL Midtown Exchange Condos Minneapolis, MN	UrbanWorks Architecture	\$8,000,000 September 2006
West River Commons Minneapolis, MN	DJR Architects	\$7,188,000 August 2004
Mount Olivet Home Expansion & Renovation Minneapolis, MN	WAI/Continuum	\$6,935,000 September 2004
Phalen Senior Housing St. Paul, MN	DJR Architects	\$6,561,000 February 2006
Elim Care Nursing Home Princeton, MN	WAI/Continuum	\$5,010,000 July 2004
Payne Avenue Townhomes St. Paul, MN	LHB Architects and Engineers	\$3,160,000 February 2006
Mendota Heights Family Townhomes Mendota Heights, MN	Paul Madson + Associates	\$2,462,400 May 2000
Garden Terrace Commons Senior Apartments Little Canada, MN	Collaborative Design Group	\$2,495,000 June 2003
Wellstone Commons Northfield, MN	Elness Swenson Graham Architects	\$1,999,000 October 2004
New Village Apartment Renovation Minneapolis, MN	Bowers, Brian & Fiedt	\$1,241,000 September 1992



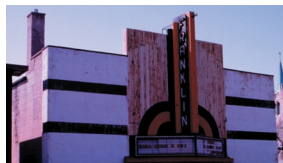


# SHAW-LUNDQUIST ASSOCIATES INC

## REPRESENTATIVE HISTORIC PRESERVATION/RESTORATION PROJECTS

This lists selected historic preservation/ restoration construction projects completed by Shaw-Lundquist Associates, Inc. These projects highlight our expertise and abilities to execute extremely complex and detailed work while protecting and honoring the past.

PROJECT/LOCATION	ARCHITECT/DESCRIPTION	CONTRACT/COMPLETION
Minnesota Veteran Home Renovations Minneapolis, MN	Ellerbe Becket, Inc. 348 unit housing restoration	\$20,805,000 May 1999
Fort Snelling Visitors Center Minneapolis, MN	Elness Swenson Graham Architects Historic Fort Snelling	\$2,755,000 July 1982
Little Earth Early Learning Center Minneapolis, MN	Meyer, Scherer & Rockcastle Architects Adaptive reuse of dormant facility	\$2,167,000 August 1999
University of Minnesota Wulling Hall Minneapolis, MN	Carlsen & Frank Architects Accessible Entrance, Classrooms	\$1,445,000 December 1994
Renaissance Square Renovations Minneapolis, MN	Xcel Energy Restoration	\$1,304,000 March 1993
The Cathedral Church of St. Mark Minneapolis, MN	Bentz, Thompson, Rietow, Inc. Interior restoration	\$1,248,000 December 1992
New Village Apartment Renovation Minneapolis, MN	Bowers, Brian & Fiedt Housing for Hmong Community	\$1,241,000 September 1992
Hosmer Library Addition and Renovation Minneapolis, MN	Meyer, Scherer & Rockcastle Architects Conversion	\$1,973,000 October 1997
The Balmoral Apartments Minneapolis, MN	DJR Architects Residential restoration	\$931,000 May 1999
Foster House Plant Restoration Minneapolis, MN	Roger Johnson-Richard Smith Architects Adaptive Reuse for NRG Energy	\$842,000 July 1997
The New Franklin Theatre Restoration Minneapolis, MN	DJR Architects Design/Build restoration	\$670,000 March 2000
Foshay Tower Minneapolis, MN	Bentz, Thompson, Rietow, Inc. 26th floor restoration	\$90,000 May 1991



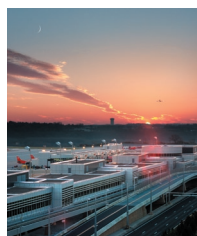


# SHAW-LUNDQUIST ASSOCIATES INC

## REPRESENTATIVE AIRPORT PROJECTS

This lists selected airport projects completed by Shaw-Lundquist Associates, Inc. We have a deep understanding of airport construction as demonstrated by the variety of project sizes and types shown here. Our expertise greatly benefits our Airport clients.

PROJECT/LOCATION	ARCHITECT/ENGINEER	CONTRACT/COMPLETION
MAC Green Concourse Expansion Phase 2 Lindberg Terminal Concourses A & C MSP International Airport, MN	Architectural Alliance	\$39,797,000 December 2002
MAC Green/Gold Connector Lindberg Field MSP International Airport, MN	BWBR Architects	\$20,619,500 July 2000
3M North Hanger Facility St. Paul, MN	BWBR Architects	\$1,577,800 December 1999
Northwest Airlines Parking Ramp MSP International Airport, MN	Elness Swenson Graham Architects	\$6,744,300 April 1999
Sun Country Temporary Hanger MSP International Airport, MN	Tushie-Montgomery Associates	\$1,988,000 September 1998
934 Airlift Group Maintain/Repair/Alter. to Bldg. 852 MSP International Airport, MN	Toltz, King, Duvall, Anderson	\$1,364,000 May 1994
MAC Parking Ramp Phase II MSP International Airport, MN	Elness Swenson Graham Architects	\$671,900 May 1989
Mesaba Airlines Hanger MSP International Airport, MN	Tushie-Montgomery Associates	\$43,500 November 1988
MAC Blue/Green Bridge Connector Lindberg Field MSP International Airport, MN	Architectural Alliance	\$1,006,800 March 1986
National Guard St. Paul Army Aviation Support Facility Holman Field St. Paul, MN	Ankney, Kell and Associates	\$3,327,400 April 1985
Reserve Forces Communications/Electronics Training Facility MSP International Airport, MN	Hammel, Green & Abrahamson, Inc.	\$950,800 May 1978





# SHAW-LUNDQUIST ASSOCIATES INC

## K-12 EDUCATION FACILITIES

This lists the Facilities projects completed by Shaw-Lundquist Associates, Inc. for our K-12 Educational Clients. With our vast building experience on K-12 campuses, we are able to meet all K-12 Educational Facilities construction needs.

PROJECT/LOCATION	ARCHITECT/ENGINEER	CONTRACT/COMPLETION
Whittier Elementary School Minneapolis, MN	Kodet Architectural Group, Ltd.	\$13,495,000 August 1997
Cityview Community School Minneapolis, MN	Smiley Glotter Nyberg	\$11,612,000 August 1999
Lucy Laney @ Cleveland Park Elementary School Minneapolis, MN	KKE Architects	\$10,996,000 August 2000
Wayzata Senior High School Plymouth, MN	Armstrong, Torseth, Skold & Rydeen	\$10,501,000 June 1996
Big Lake Elementary School Big Lake, MN	Architects Rego & Youngquist	\$9,063,000 June 2003
Osseo Junior High School Osseo, MN	Armstrong, Torseth, Skold & Rydeen	\$8,740,000 October 2004
W. Harry Davis Academy Minneapolis, MN	Smiley Glotter Nyberg	\$7,881,000 August 1995
McGuire Junior High School Lakeville, MN	Wold Architects and Engineers	\$7,145,000 July 1994
Jenny Lind Elementary School Minneapolis, MN	Smiley Glotter Nyberg	\$6,887,000 August 1995
Shakopee Senior High School Shakopee, MN	Wold Architects and Engineers	\$6,410,000 August 1999
Farmington High School Farmington, MN	Armstrong, Torseth, Skold & Rydeen	\$5,671,000 August 2004
Jefferson K-8 School Conversion Phase I & II Minneapolis, MN	Armstrong, Torseth, Skold & Rydeen	\$5,344,000 August 2001
Harding Senior High School St. Paul, MN	Ankeny Kell Architects	\$4,697,000 August 1995





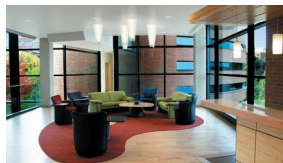


# SHAW-LUNDQUIST ASSOCIATES INC

## HIGHER EDUCATION FACILITIES

This lists the Facilities projects completed by Shaw-Lundquist Associates, Inc. for Higher Education Clients. With our vast building experience on higher education campuses, we are able to meet all Higher Education Facilities construction needs.

PROJECT/LOCATION	ARCHITECT/ENGINEER	CONTRACT/COMPLETION
Ridder Arena & Baseline Tennis Center University of Minnesota Minneapolis, MN	Ankeny Kell Architects, P.A.	\$15,487,200 September 2002
Cargill Building for Microbial & Plant Genomics University of Minnesota St. Paul, MN	Architectural Alliance	\$13,622,000 December 2002
Wheelock Whitney Hall Minneapolis Community & Technical College Minneapolis, MN	Cunningham Group	\$8,950,000 November 2002
Jodaas Science Center, Normandale Community College Bloomington, MN	Hammel Green Abrahamson	\$7,840,000 August 2002
Saint Paul College Renovations St. Paul, MN	Pope Associates, Inc.	\$7,295,590 September 2000
Trafton Science Center Addition Minnesota State University Mankato Mankato, MN	Hammel Green Abrahamson	\$5,654,000 January 1994
Amundson Hall, University of Minnesota Minneapolis, MN	Collaborative DesignGroup	\$4,464,000 September 1999
Plant Growth Facilities Phase I University of Minnesota St. Paul, MN	RSP Architects, Ltd.	\$4,352,850 September 2002
Fleet Services, University of Minnesota St. Paul, MN	Oertel Architects	\$3,043,954 August 2000
Dwan Variety Club Research Center KE Animal Surgery University of Minnesota Minneapolis, MN	Studio Five Architects	\$1,072,250 February 2002
Wulling Hall Remodel, University of Minnesota Minneapolis, MN	Carlsen & Frank Architects	\$1,445,385 December 1994





# SHAW-LUNDQUIST ASSOCIATES INC

## REPRESENTATIVE LIBRARY PROJECTS

This lists selected library projects in progress or completed by Shaw-Lundquist Associates, Inc. With experience in new library building and library renovation, we are able to meet all our clients' library construction needs.

PROJECT/LOCATION	ARCHITECT/ENGINEER	CONTRACT/COMPLETION
Brookdale Library Hennepin County Library System Brooklyn Center, MN	Buetow & Associates, Inc.	\$21,800,000 January 2004
Wheelock Whitney Hall Minneapolis Community & Technical College Minneapolis, MN	Cunningham Group	\$8,950,000 November 2002
Library & Commissary Renovations Saint Paul College St. Paul, MN	Pope Associates, Inc.	\$7,296,000 September 2000
Rice Street Library Saint Paul Public Library System St. Paul, MN	BKV Group	\$2,030,000 May 2002
Ridgedale Library Hennepin County Library System Minnetonka, MN	Meyer, Scherer & Rockcastle Architects	\$14,670,000 September 1999
Southdale Library Hennepin County Library System Edina, MN	Meyer, Scherer & Rockcastle Architects	\$4,575,000 January 1992
Hosmer Library Addition and Renovation Minneapolis Public Library System Minneapolis, MN	Meyer, Scherer & Rockcastle Architects	\$1,973,000 October 1997
Architectural Library University of Minnesota Minneapolis, MN	Studio Five Architects	\$389,000 March 2000
Mt. Olivet Library Remodel Mt. Olivet Lutheran Church Minneapolis, MN	Meyer, Scherer & Rockcastle Architects	\$104,000 July 1998



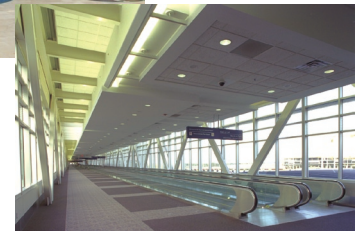


# SHAW-LUNDQUIST ASSOCIATES INC

## PROJECT SNAPSHOTS



**Project:** Minneapolis Convention Center Expansion  
**Location:** Minneapolis, MN  
**Description:** Concrete Contracts  
**Architect:** Convention Center Architects



**Project:** MSP International Airport  
**Location:** Minneapolis/St. Paul, MN  
**Description:** A&C Concourses and C&G Connector  
**Architect:** Architectural Alliance



**Project:** Cargill Building for  
Microbial & Plant Genomics  
**Location:** U of M St. Paul Campus, MN  
**Description:** 64,000 sf Lab and Research Facility  
**Architect:** Architectural Alliance



**Project:** Wells Fargo Prosperity Branch  
**Location:** St. Paul, MN  
**Description:** New 8,600 sf Bank Branch  
**Architect:** HTG Architects