

# Datastream 7i: GIS Integration



## Expanding with GIS Integration

Municipalities face a variety of asset management challenges to maintain geographically dispersed assets such as facilities, equipment, roads, bridges, and extensive piping networks. The inability to

perform the proper service at the right location can decrease the quality of service demanded by the community and create a strain on budgets that are already tight. Plus, proper inspection and preventive maintenance is required to meet GASB 34 requirements for comprehensive, uncomplicated financial reporting on assets.

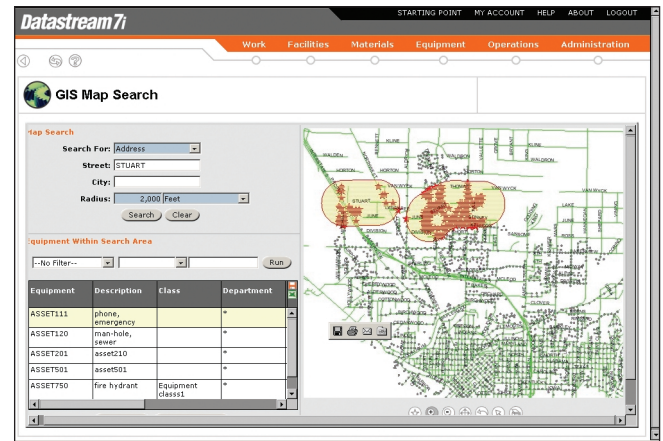
Datastream 7i, the most widely-deployed, technically advanced solution for asset performance management, helps municipalities meet these challenges with robust enterprise asset management (EAM) tools, superior technology, and, built-in functionality for addressing specific issues like GASB 34. With Datastream 7i, municipalities preserve the public's investment with asset management functionality such as work order and materials management, integrated procurement, and reporting capabilities for tracking and managing all of their equipment with one application. In addition, the flexible architecture of Datastream 7i allows municipal customers to integrate it with Geographical Information System (GIS) mapping software for a Web-based solution to address their unique environment. With the intuitive, flexible interface of Datastream 7i combined with its seamless GIS module, municipalities increase workforce efficiency and lower costs by:

- > Pinpointing assets and accessing critical information prior to servicing
- > Streamlining workflow between departments
- > Creating a consolidated, easy-to-access view of asset location and history

## Creating an Efficient Workforce by Pinpointing Assets

Minimizing inefficiencies in work management helps organizations save time and money and ensures the timely execution of work. Existing GIS implementations can seamlessly integrate with Datastream 7i to help organizations easily locate the position of assets on a map and avoid costly delays. With GIS integration providing a visual display of location, organizations easily identify and pinpoint widely dispersed assets for preventive maintenance and regular inspections, enabling them to create a more efficient workforce. For example, field technicians spend a large portion of their time searching for equipment that requires servicing. These technicians may travel back and forth across the city performing maintenance at multiple locations. With Datastream 7i, organizations optimize the workday by planning a more efficient route to designated locations, thereby reducing drive time and increasing their efficiency.

## GIS Map Search



Easily and quickly access GIS and asset information.

## Capitalizing On One Consolidated Solution

Datastream 7i enables multiple departments to centralize their GIS information so users can access all community assets and the history of those assets from one solution. Many municipalities have found value in sharing GIS maps across multiple departments. For example, a City Water and Wastewater Division may have data for water pipes, pumps, and valves while the City Stormwater Division may have the most accurate information on effluent streams and discharge points. By sharing GIS data across departments, municipalities can enhance the accuracy and effectiveness of their GIS investment.

## Accessing Key Information Through GIS and EAM Integration

Municipalities need information about their assets to properly maintain them, and the end user needs an easy way to access this information. The Datastream 7i user interface is built on leading edge HTML and J2EE specifications. Using XML messages, this interface integrates data from Datastream 7i to ESRI ArcIMS, a leading GIS application. With more flexible integration capabilities, municipalities have greater power to create an asset management solution to meet their specific needs.

### Sample Map



Datastream 7i helps you easily locate assets on the grid map.

Datastream 7i provides users with an easy-to-use geographical display of the asset location through a GIS Search screen. On this screen, the user can search for associated assets by street location and within a defined radius. The results of the search are returned to the user in a grid format for easy viewing. Specific assets contained in Datastream 7i are associated to a unique GIS asset identifier making the retrieval of data in both applications more efficient. Such seamless integration between Datastream 7i and GIS software helps organizations maintain every asset with a high level of focus.

From the results of the GIS Map Search, users can create a work order for a selected asset, and the work order will track information such as who needs to do what, where, and when. Datastream 7i allows users to attach the GIS map to the work order for printing.

As a result, customer service representatives, field service planners, schedulers, and field technicians start their tasks with precise information about the equipment's location and the work needed. And since Datastream 7i includes valuable information pertaining to assets, such as equipment history, supplier data, and warranty information, these personnel are armed with all the information they need to address issues economically and efficiently.



### Discover the Datastream 7i Advantage

One of the competitive advantages of the Datastream 7i GIS module is the ability for the GIS application to exist in a geographically different location than the user. This reduces IT maintenance and allows the user to access data from both of the applications without GIS or Datastream 7i residing on the user's PC or a common server. The communication between the two applications is through XML messaging over HTTP protocol. This follows leading-edge technology of web-architected applications and increases the customer's efficiency by reducing the support and management of the application and integration.

Integrating GIS software with Datastream 7i gives municipalities a unique advantage in the way they track, locate, and manage assets by making the critical functionality they need easily accessible. Plus, seamless Datastream 7i and GIS integration creates a consolidated view of operations and increases information availability across the organization.

To optimize revenue, deliver effective public services, and increase the life of community assets, call Datastream at 1.800.955.6775 (USA and Canada) or 1.864.422.5001 (direct), or e-mail [info@datastream.net](mailto:info@datastream.net).

**Datastream®**  
> [www.datastream.net](http://www.datastream.net)

50 Datastream Plaza  
Greenville, SC 29605 USA  
1.864.422.5001 direct  
1.800.955.6775 USA and Canada  
1.864.422.5000 fax  
[info@datastream.net](mailto:info@datastream.net)