



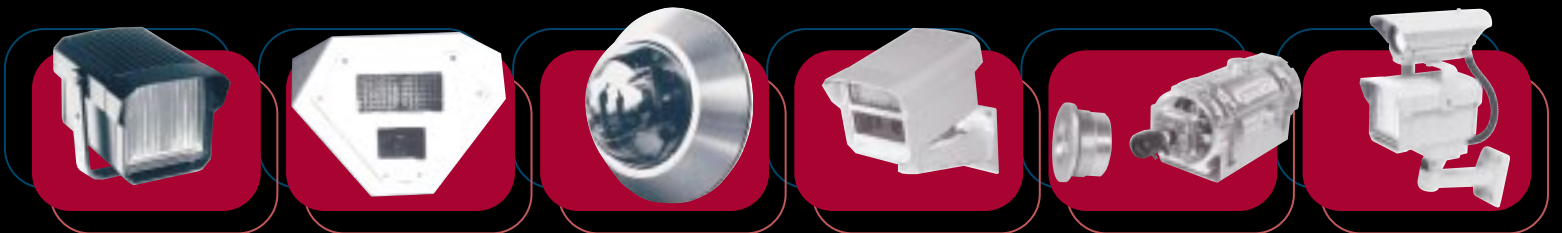
Extreme CCTV[®]

SURVEILLANCE SYSTEMS



- Infrared Illuminators
- Integrated Day Night (IDN[™])
- Hi-Impact Domes
- All Weather / All Environment
- Explosion Protected
- MECC – No Plug. Just Play.[™]
- REG[™] – License Plate Reader
- ZX55 – SuperLED IDN[™]

Big Ben rises above London to tell time, while a "CCTV Tree" captures the impending darkness to tell tales on what is coming and going through London's city core.



Precision Engineered Opto-Electronics[™]

w w w . E x t r e m e C C T V . c o m

2003/2004

INFRARED

Infrared Illuminators

Precision Engineered for Night Surveillance

If there is no light,
... there can be no picture.

Still photography is the art of capturing light. Surveillance photography is the art of capturing moving light.

In the convergence of a digital world, the technologies have become the same. In both cases, if there is no light, there can be no picture.

No portrait photographer in the world works without lighting equipment, the essential tools to "making" photos by creating and controlling light effects.

Yet most surveillance photographers today, simply "plug and play" to "take" video photos and accept whatever the ambient light allows.

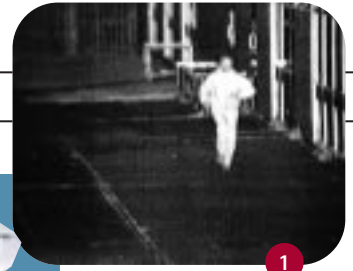
At Extreme CCTV, we are raising the performance standard of video surveillance to a 24 hour – day/night, all-condition level.

We have mastered the art of creating infrared light for today's CCD camera. We filter the near-infrared. And we reflect it, shape it and control it to give you the power to get your picture under bright light, low light or no-light. With mastery of this "invisible light", we create the conditions that are necessary for optimal CCD camera performance.

Model UF500 is unlike any other illuminator. Recently awarded a U.S. Patent, its testimony to its high performance is its user list that includes the highest levels of government in the U.S., U.K. and Canada.

In the video-stills below, the human eye sees nothing in the dark scene at left, while the infrared supported camera (at right) sees it all. Uncovered at 700 feet (225 m) away, a government helicopter is monitored in the dark using twin UF500 infrared illuminators and an FSX800 camera.

See the Light. Get the Picture.™



1

1. Detected at 150 meters (500 feet) in total darkness, a runner is tracked with video motion detection (VMD). Even illumination in the infrared spectrum allows

for pixel change detection which is vital for VMD. (videoprint copy, actual resolution is better)



2

2. Twin UF500 infrared illuminators are specified for proactive police surveillance throughout Europe. In the Americas, the UF500 has become the benchmark for high performance infrared and is used by defense, police and industry. It is the world's only patented infrared illuminator, unique in its ability to evenly illuminate a dark scene with infrared energy.



3

3. The UF-LED uses solid-state LEDs to achieve durable long life illumination to 200 feet. (60+ m).



4

4. The UF100 is a compact version of the UF500. It operates at 12 VDC and utilizes 70 Watts for its 250 foot (80 m) performance.



5

5. The EX26LED matches well with conventional CCTV cameras to achieve 24-7 day/night video at new or existing camera locations.



6

6. The EX60LED is an explosion-proof infrared illuminator commonly used in hazardous factory applications where additional lighting is required to support CCTV or machine vision.

The REEL DEAL™

All of the video-photos in this document are video-stills taken from real video surveillance to demonstrate Extreme CCTV equipment. (The performance you will see on your monitor will actually be BETTER.) We use no simulations. There are no fake portrayals. Even the animal shots are of the real wild. REEL DEAL video-stills are available to Extreme CCTV dealers to support your sales.





UF500

UF500 FEATURES:

- High output even-illumination
- No foreground overexposure
- Gold optics for greater I.R. efficiency
- 730 nm, 830 nm and 950 nm Filter models
- Spot, 10 deg, 30 deg and Flood Beam models
- Integrates with Pan/Tilt motors
- Low operating voltage / Long bulb life
- Uses 220 watts to outperform other 500 watt brands

UF500 Even-Distribution Infrared Illuminator

Patented design allows an even distribution of I.R. light for unsurpassed night viewing over 200 meters with dual illuminators (with twin lamps). This very special feature allows good infrared sensitive cameras to operate with a greater dynamic range to receive clear, low-noise pictures from foreground to a distant background in complete darkness.



SuperLED™

SuperLED™ FEATURES:

- Solid state > 5 years life
- Semi covert 850 nm & covert 940 nm
- Achievable distances up to 575 ft+ (175+m)
- Robust construction
- Outdoor and indoor applications
- Low voltage at camera head
- Broad effective coverage
- Improves performance of frame integration cameras
- Relay contacts for remote control & event activation

SuperLED™ Infrared Illuminator

The SuperLED™ is a full size, robust illuminator designed to outperform conventional infrared devices while using 1/3rd the amount of electrical power. Its accompanying engineered power supply ensures long-life beyond 5 years.



Ancient world wonder gets modern world security. SuperLED™ illuminators were chosen to provide night vision security at monumental sites in Egypt. Night time tourist events and the wide expanse at the Great Pyramids made the SuperLED™ the ideal illuminator for this extreme environment.

Full Scene Even Illumination in the Infrared



Above: In the monitor photo of a dark night-time scene, the vehicle at 150 feet (50 m), the person at 300 feet (100 m) and the fence at 500 feet (160 m) are all clearly visible because of the even-illumination provided by dual 830 nm UF500 infrared lamps.

Why is Infrared Important?

1. Infrared allows for proactive policing by capturing night-crime events in locations of high crime-probability.
2. Infrared night-time surveillance is demanded in a 24/7 digital world.
3. Infrared allows for video evidence not possible to attain with visible light.
4. Night surveillance is often more important than daytime surveillance.
5. Infrared allows Video Motion Detection (VMD) functions in DVRs to work better at night by decreasing picture noise.
6. The alternative of using bright lighting of large areas is much more expensive than strategically placed infrared lighting.

Recent Applications:

US DEA	Traffic monitoring on river
US DOD	Undisclosed sites
US Secret Service	Undisclosed sites
US National Guard	Military equipment security
US Government	Water Reservoirs
UK Royal Navy	Perimeter surveillance at base
UK Government	Embassies worldwide
Canadian Prisons	Perimeter surveillance
Windsor Castle	Queen's residence security



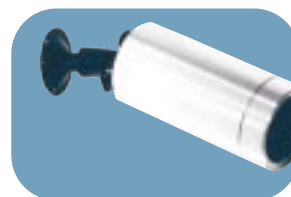
EX46LED

- High Impact Dome
- 42 LED infrared array
- Pan/Tilt adjustable
- local area illuminator



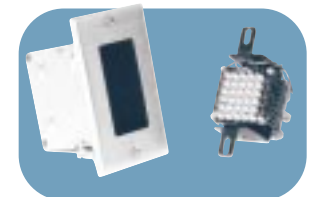
EX12LED

- Anodized Aluminum
- 42 LED infrared array
- Weatherproof CNC Case
- local area illuminator



LED BULLET™

- Discreet IR
- 30 LED infrared array
- Universal Bracket
- local area illuminator



EB-IR

- Discreet Gang Box IR
- 30 LED infrared array
- Pan/Tilt adjustable
- local area illuminator

INTEGRATED

IDN™ by Extreme CCTV

Integrated Day Night Cameras



A Quattro IDN camera provides a full color picture under bright light conditions. But with the lights out (photo at left), a totally dark room would usually result in a totally dark and useless picture, except that the photocell triggered infrared has allowed for a more complete picture of the entire scene.

Designed specifically for a relentless 24/7 digital world, a new category of camera is introduced by the engineers of Extreme CCTV. When most security cameras sold today are "plug and play" for the optimum conditions of a daytime scene, customers are usually left with a poor or useless picture at night. A demanding 24/7 world would regard that as half a solution. In the world of Extreme CCTV, the IDN camera will get you a total solution.

Integrated into a single housing, the IDN camera by Extreme CCTV will create light, capture light and control the light to ensure a high-signal / low-noise picture under all day and all night conditions.

Today's security provider is expected to be a professional videographer. It is not enough to plug and play to take video-photos of whatever the ambient light allows.

"You don't take a photograph, you make it." ... Ansel Adams

And if there is no light, there can be no picture.

The IDN by Extreme CCTV raises the professional standard of video surveillance to a 24/7 day/night - all condition level.

IDN: Integrated for Day and Night Performance

We integrate a camera, lens, infrared illuminator, photocell, power regulator, control relay and a vandal resistant environmental housing. You make the simple BNC video connection and low voltage power leads.



1 *



2



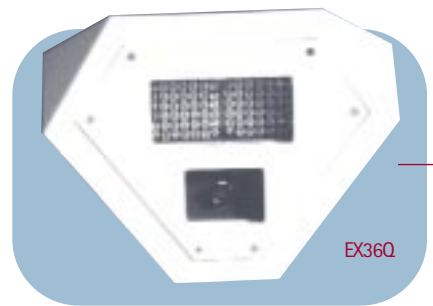
3



4 *

1. An EX82DXL is a powerful integration of two CCD sensors and 84 LEDs. An excellent color picture by day is complemented with 150 foot infrared surveillance in the dark of the night.
2. The EX38NX needs only 15 Watts of power to pull a picture of a night scene 150 feet away. The compact camera is ideal for perimeter surveillance around businesses and homes.
3. The EX26NX needs only 8 Watts of power to pull video surveillance out of the dark 75 feet away.
4. An IDN camera for the urban environment is the EX49N. Its Conical No-Grip (CNG) design promotes safety and is ideal for institutions where cameras consider suicide prevention.

* denotes Patent Pending designs.

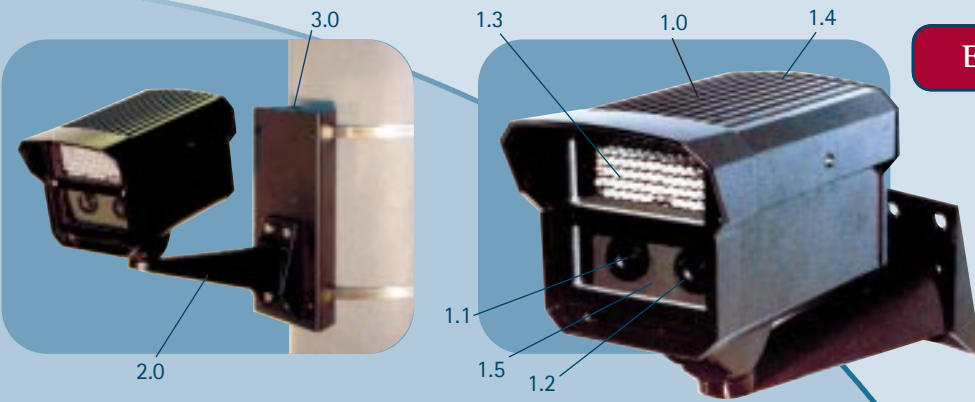


EX36Q



The EX36Q is a corner No-GRIP camera designed to get the full view of an entire room, its 4 walls and all of its floor on a 24 hour - day / night basis.

The unique design (patents pending) is specified for use in psychiatric rooms of hospitals and prisons. A color daytime scene (at far left) shows the entire room. The same room at night in total darkness is also within full view through even illumination in the infrared at 940 nanometers.



EX82 DXL Dual CCD - IDN Camera

Homeland Security under computer-based surveillance requires relentlessly accurate 24/7 video. The EX82DXL delivers that even in complete darkness while using less than 20 Watts of power. Accurate color day vision is delivered with a 1/3" Color CCD and varifocal auto-iris lens. Night vision is delivered with an LXR-CCD and IR LED array at 850 nm. A photocell driven control board provides automatic day / night switching.

Benefits: Accurate color / Accurate monochrome. No focus shift. No IR bleed. Low power consumption. All-weather durability.

A ruggedized bracket and optional pole mount adaptors allow the EX82 to be installed to any surface, wall, pole or tree.



- 1.0 Dual Sensor IDN Camera
 - 1.1 Color Sensing CCD / Lens
 - 1.2 IR Sensing CCD / Lens
 - 1.3 Infrared 90 LED Array 850 nm
 - 1.4 Power Control Board
 - 1.5 Photocell with Sensitivity Controller
 - 2.0 Wall Bracket
 - Optional:
 - 3.0 Pole Mount Adaptor:
- C700 - VA408
SX400 - V408
- included
included
included
included
- EXMB.015



EX11NX Architectural IDN™

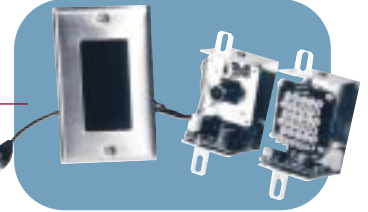
One Lux of light-on-scene generated by a laptop will yield a poor picture (below) for any camera.

The same dark scene is revealed to perfection (far right) with the EX11NX ... which also looks great beside other home automation gear.



EX11DXL Dual Sensor/Dual Lens

The EX11DXL's unique patent pending design combines two cameras, infrared illumination and a wide dynamic range for superb color images during the day and high-signal monochrome at night.



EB-S300/EB-IR Covert IDN™

Installed beside a light switch, an EB camera covertly achieves 'in-your-face' surveillance. The EB-IR avoids shots like that of the middle scene and shines an invisible light across your face or across your room.



EX70N Explosion Proof

- 24 LED infrared array
- UL/CSA Class I, Class II
- Groups B-G, Div. 1 & 2



EX46N Night Vision

- High Impact Dome
- 24 LED infrared array
- S300 CCD Camera



EX37N Night Vision

- Wall Mount
- LED array / 50 foot range
- 850 nm or 940 nm



EX35N Night Vision

- Corner Mount
- LED array / 50 foot range
- 850 nm or 940 nm

HI-IMPACT

Hi-Impact Domes

Precision Engineered by Extreme CCTV

For the professional CCTV installer, the camera that is "plug and play" can be synonymous with "plug and pray." Like the "Instamatic" photo camera, the auto-everything board camera with fixed micro-lens has limitations under most light conditions. "What you see is what you get" was the accepted standard of the 1990's.

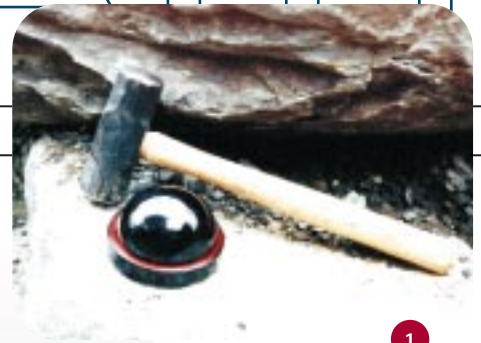
But expectations have changed almost overnight. A techno-savvy society of CD, DVD, PC, PDA and Internet users is demanding more in a 24/7 digital age. The professional security provider is now assumed to be an opto-electronics expert who can deliver a great video-picture under bright light, low light, back-light, no light, and otherwise awful light conditions.

Professionals who install hardened dome cameras require features like varifocal auto-iris lenses, BLC, AGC, gamma, line-lock, shutter speed control and infrared illumination to get the picture under all light conditions. These compact dome cameras are expected to perform in a multitude of indoor and outdoor urban environments.

The urban dome camera must be a lot more than "hammer tough".

The Hi-Impact Dome Camera by Extreme CCTV is precision engineered for optics control, for power control and for the environments of the world's toughest locations. With these added features, it is now broadly specified for use in prisons, hospitals, schools and in the lobbies of elegant hotels like that of Chateau Whistler's in BC Canada.

Designed for precision, and manufactured with precision, the Hi-Impact Domes are now offered in several model types.



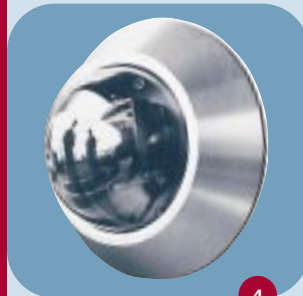
1



2



3



4



5



6

1. A lot more than hammer tough, the Hi-Impact Dome by Extreme CCTV is precision engineered for technical surveillance.

2. Built to withstand the extreme environment of a Canadian winter, Chateau Whistler is located 2 hours from Extreme CCTV headquarters.

3. Within the Chateau Whistler are many very tough EX45 Hi-Impact Dome cameras installed with discreet elegance for a 5-star hotel.

4. A Hi-Impact Dome Camera that is impossible to grip is the EX48 Conical No-Grip (CNG). Patent (applied) to promote safety, it is ideal for prisons and hospitals where camera design must consider suicide prevention.

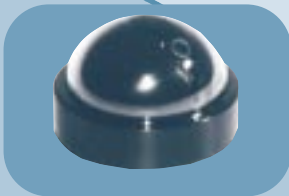
5. Located to view the money, the employee and the customer outside, an EX45 camera is mounted "in your face" at a take-out drive-thru. A technical video-shot like this requires as many control features as possible to allow the installer more options to control lighting effects.

6. The Conical No-Grip™ camera can be secured with the optional PERMALOCK™ Ring which requires a special tool to fasten the permanent retainer. Permalock™ is specified for use in schools, prisons and public facilities.



EX44 Dual Sensor Dome Camera

- One Dome – Two Cameras
- Two views of the same event
- See them coming and going



EX45 The Original Hi-Impact Dome

- CNC Machined Anodized Aluminum
- Patent (applied) Ball Joint Gimbal
- 1/3" Class 'A' CCDs / VRB / NEMA 4

EX45S300 – Mono 420 TVL Fixed Lens of Choice
 EX45S600 – Mono 600 TVL Fixed Lens of Choice
 EX45C300 – Color 350 TVL Fixed Lens of Choice
 EX45C700 – Color 480 TVL Fixed Lens of Choice



EXMB 045 Dome Pendant Bracket

A heavy duty wall bracket for pendant mounting of Extreme CCTV dome cameras and LED infrared illuminators. Cast aluminum design allows for cable management and tough 4-bolt anchorage.



EX46LED Infrared Illuminator

- Infrared in an urban dome
- 42 LED array at 850 nm or 940 nm
- Tilt & Rotate adjustable
- Dimmer Control



• A poor backlit scene (at top) is corrected with infrared (at middle). A pitch black, no-light scene (at bottom) is revealed under pure infrared illumination. The EX46N and EX49N models are the world's only Integrated Day Night (IDN™) dome cameras.

EX46 Full House Dome

- Auto-Iris, BLC, Gamma Controls
- Varifocal 4 – 8 mm Lens
- XYZ – Pan/Tilt adjustable
- Dual VRB 12 VDC or 24 VAC

EX46S3-VA408	Mono 1/3" CCD 420 TVL, VA Lens
EX46S6-VA408	Mono 1/3" CCD 600 TVL, VA Lens
EX46C3-VA408	CLR 1/3" CCD 350 TVL, VA Lens
EX46C7-VA408	CLR 1/3" CCD 480 TVL, VA Lens
EX46CX4-VA408	CLR 1/3" LXR 350 TVL, VA Lens



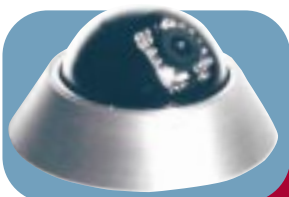
EX47 Royal Flush

- Solid flush mount dome
- Fits wall / ceiling hardware
- Full pan/tilt range for 90 deg view
- Fits all CCDs as per EX45 model

EX49N & EX46N CNG Night Vision Dome

- CNG Dome Night Vision
- Mono CCD + LED I.R.
- Pan/Tilt adjustable

EX49N8400 – Mono 420 TVL Fixed Lens, 850 nm
 EX49N9400 – Mono 420 TVL Fixed Lens, 940 nm
 EX49NX8400 – LXR 420 TVL Fixed Lens, 850 nm
 EX49NX9400 – LXR 420 TVL Fixed Lens, 940 nm



EX48 & EX49 CNG Domes

- Conical No-Grip™
- Patent Pending Safety Design
- EX48 CNG for fixed lenses
- EX49 CNG for varifocal lenses
- Patent Pending



The EX44, EX45 and EX46 attach to standard electrical hardware fittings for simple effective low-cost installations.



EXTREMES

All Weather/All Environment

Precision Engineered for World Extremes

A surveillance camera must withstand the forces of its intended location. All Extreme CCTV cameras are weather resistant, but most are resistant in the EXTREME for specific environments.

Specific models of Extreme CCTV cameras are also resistant to environments that are acidic, corrosive, very wet, very hot, very cold and very hostile.

The "conventional" all-weather camera is defined by Extreme CCTV as an enclosed camera on a bracket, exclusive of our IDN, infrared and explosion protected camera types.

Because they are made by Extreme CCTV, they are all inherently weather resistant.

They are all Precision Engineered with proven performance from Kuwait to Canada, and from the Antarctic to Africa.

EX7 - single sensor ceiling/wall camera

EX8 - dual sensor ceiling/wall camera

EX10 - waterproof, corrosion proof, extreme weather

EX15 - acid resistant corrosion protected, extreme environment

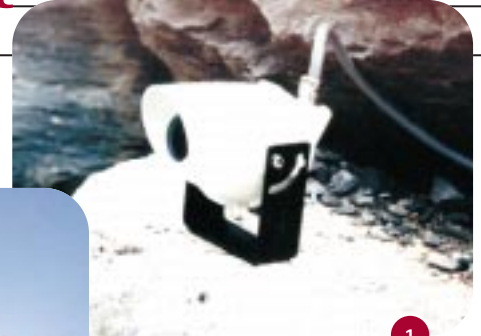
EX26 - all-metal, all-weather, compact-lens camera.

EX27 - all-metal, all-weather full-size-lens camera

EX28 - all-metal insulated zoom lens, extreme weather camera housing



2



1

1. The EX10 molded Nylon housing is watertight and acid resistant for corrosive environments. It can operate in ambient temperatures as low as minus 60 deg C. With its stainless steel hardware, it is also hurricane ready in tropical marine environments.

2. Set atop a volcano in the Antarctic, an Extreme CCTV camera must withstand acidic plumes and lava bombs in addition to the extreme temperatures. Extreme CCTV engineers offer custom design services to its professional customers.

3. The EX7 Ceiling Mount Camera surpasses the performance of "Wedge" type cameras by offering full-power CCD and Lens combinations with compact toughness. It is ideal for use in hallways and corridors where it is important to get accurate short to long-range sights.

4. The EX8 Ceiling Mount Camera incorporates two CCD sensors to allow for viewing out of its two ends. It is ideal for use in hallways and corridors where it is important to view the activity as it "comes and goes."

5. With industrial PVC commonly used in the pulp and paper industry, an EX15 camera can be expected to survive indefinitely in man's most chemically hostile environments.

6. The EX26 and EX27 are all-aluminum all-weather cameras. An optional sunhood makes it ideal for hot desert environments. Sealed gasketed design also makes it dust and sand tight. The EX27 can accommodate large varifocal lenses and is complemented perfectly with Extreme CCTV infrared.

7. An Extreme CCTV camera in an EX28 insulated housing (photo at left) pulls out a picture out of the Arctic darkness with the help of UF500 infrared illuminators to capture a rarely seen Arctic Fox (photo far left) with its eyes locked on a much larger animal, the Polar Bear. Camera performance under extreme weather is expected in today's 24/7 world.



3



4



5



6



7



Polar Bear Cam, Nov, Nov 08, 08 - 8:15:39 PM



Polar Bear Cam, Nov 17, 00 - 11:05:41 PM



EX7/EX8 Wedge Type Ceiling/Wall Camera

- CCD Sensors in Color or Mono
- Compact at only 3" off ceiling
- Easy two-piece installations
- Fixed Lens of choice or Varifocal Auto-Iris Lens
- Tough metal No-Grip™ housing
- Polycarbonate unbreakable windows
- Fits onto electrical boxes
- Installs to ceilings and walls
- Paintable metal covers



EX10 Molded Nylon Housing

- Waterproof marine environment
- Extreme cold temp rated -60 deg. C
- NEMA 6 - IP67 - Equivalent
- Rust/corrosion proof
- Clear polycarbonate window
- Stainless steel hardware



Northern Bald Ibis of Morocco

Extreme CCTV EX38NX Integrated Day Night™ Cameras have been installed in Souss-Massa National Park in Morocco in order to monitor the critically endangered Northern Bald Ibis, a bird that roosts and nests on the sea cliffs of the region. This ancient species has a long history in Africa; its images can even be found in the art and hieroglyphs of early Egypt. The historical bird now faces extinction in the wild, possibly due to climate change and pesticide use.



EX27 All-Weather Aluminum Housing

- Compact & Weathertight w/ Sunhood (optional)
- Fits Varifocal Al lenses / Heater optional



EX15 Anti-Corrosive

- Industrial PVC / Acrylic
- Extreme corrosive sites
- Stainless steel hardware
- For EX5 or other CCDs

EX27S3-VA358 - Mono 420 TVL - VF Auto-Iris 3.5-8 mm
 EX27C3-VA358 - Color 350 TVL - VF Auto-Iris 3.5-8 mm
 EX27SX4-VA358 - Mono LXR 420 TVL - VF Auto-Iris 3.5-8 mm
 EX27SX8-VA612 - Mono LXR 600 TVL - VF Auto-Iris 6-12 mm
 EX27SX8-VA8551 - Mono LXR 600 TVL - VF Auto-Iris 8.5-51 mm



EX26 All-Weather Aluminum Housing

- Compact & Weathertight w/ Sunhood optional
- Fits Fixed Lenses and Night Vision Options

EX26S304 : Mono Med. Res. 420 TVL, 3.6 mm Lens
 EX26C304 : Color Med. Res. 350 TVL, 3.6 mm Lens
 EX26N8305 : IDN™ Night Vision, Mono 420 TVL, 4.3 mm Lens
 EX26NX8406 : IDN™ LXR Night Vision. 420 TVL, 6.0 mm Lens

EX27SX800 + Twin UF100's

- Compact IR Performance
- 400 foot (125 m) range at 730 nm
- Durable two year bulb life



• The night-time stomping grounds of the Elephants require a hot weather, dustproof camera and large infrared. (EX27 + UF500)



EX27SX800 + UF-LED

- "Fit & Forget" Extreme Performance
- Long Life LED camera-lamp combo
- Durable 100 feet (30 m) range



• The jungle of the world's deadliest night predator, the rarely seen Leopard, requires an excellent camera and extremely reliable infrared. (EX27SX800 + UF-LED)



EX27SX800cs + UF500

- World's best IR camera-lamp combo
- Even illumination to 525 feet (170 m) @ 730 nm



• The killing fields of the King of Beasts is also most active in the night. Bring a pan-tilt motor, a great camera, zoom lens and UF500 infrared. (EX28 + FSX800)



• The practice fields of the military require a lot of infrared for night exercises. (EX27SX800 + UF500)



• The landing fields for small aircraft can be secured in the dark at 700 feet with 940 nm IR to avoid any detection of red infrared. (EX28 + FSX800 + UF500)



EXPLOSION

Explosion Protected CCTV

Precision Engineered for Hazardous Environments

A nation's economy can be dependent on its primary and secondary industries. In the UK, oil refineries, chemical plants and gas plants have long been monitored with CCTV for fear of terrorist attack and for crime protection. In North America, we have only begun to protect our factories with CCTV.

Industry is finding that the use of CCTV in factories promotes safety. Factory managers can monitor people, processes and equipment to ensure good operation and good safety practices. CCTV cameras can be located where there are hazardous or unhealthy conditions. Automated factories can utilize smart CCTV technology to trigger alarms if a process has gone awry.

Extreme CCTV's line of compact explosion protected CCTV products and infrared illuminators are rated as high as Class I, Div 1,2, Group A and B.

EX50 Compact Camera Housing

- Class I, Div 1, Group A-D

EX60 Full Size Camera Housing

- Class I, Div 1,2, Group A-D
- Class II, Div 1,2, Group E-G
- Class III
- T6 Rating - max. surface temp. 85° C

EX60LED Infrared Illuminator

- LED Array at 850 nm or 940 nm
- Med / High / Low Light Levels
- Class I, Div 1,2, Group A-D
- Class II, Div 1,2, Group E-G
- Class III
- T6 Rating - max. surface temp. 85° C

EX70 Compact Wall Mount Camera

- Class I, Div 1, Group B-D

EX70N Night Vision IDN Camera

- Class I, Div 1, Group B-D

EX75 Compact Monitors

- LCD Monitor / Various Sizes
- Class I, Div 1,2, Group B-D
- Class II, Div 1,2, Group E-G
- Class III



1

1. An EX60 explosion protected camera is mounted to Wall Bracket EXMB.003. Stainless steel straps clamp the EX60 onto a U-channel base.



2

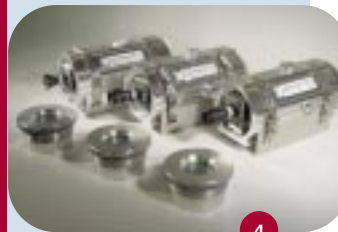
2. The EX60 accommodates full-size cameras and zoom lenses and is available in 14" and 20" lengths.



3

3. The EX60LED is a low-voltage infrared illuminator commonly used in hazardous factory applications where additional lighting is required to support CCTV or machine vision.

4. The EX50 is a compact explosion protected camera housing. At only 3.5 inches in diameter, it is possibly the world's smallest camera of its type but can accommodate high specification optics.



4

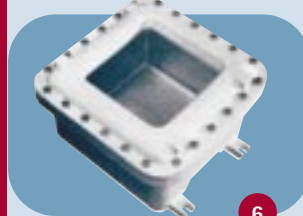
5. The EX70 is a compact wall mount explosion protected camera.

6. A series of explosion protected LCD monitors allow the ability to install low-voltage video monitoring in hazardous locations.

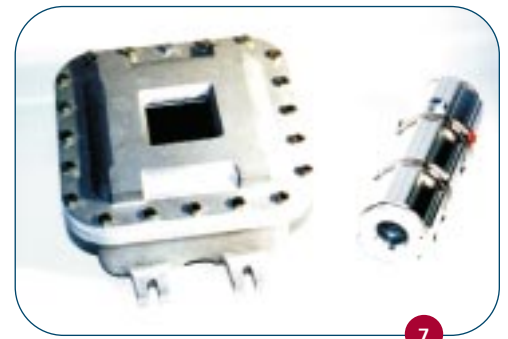


5

7. The EX50 + EX75 make for the world's smallest camera + monitor combination.



6



7

NEW TECHNOLOGY

SuperLED™ IDN™

Precision Engineered by Extreme CCTV



ZX55 FEATURES:

- DXL™ Dual Sensor Optics
- SuperLED™ Infrared Performance
- IR Performance Lenses
- 60m (200 ft) Night Vision
- 50 Watt - 24 VAC Operation
- Day/Night 24/7 Perfection
- Cable Managed Bracket



ZX55

SuperLED™
IDN™ Camera

In a category that Extreme CCTV created a half decade ago, the all-new ZX55 is the latest pinnacle for Integrated Day Night (IDN™) cameras. Power is the issue and it is delivered with brilliant versatility through full-size" LXR CCD optics, wide-aperture IR-specific lenses, SuperLED™ infrared illumination and a new patent (applied) cooling technique that allows for the "impossible" performance never before seen from a surveillance camera that only requires 50 Watts. Perfected color in daylight and perfected infrared performance by night-light means the assurance of high-signal / low noise performance around the clock under any ambient light conditions out to 200 feet in complete darkness. Built-in DXL technology (for dual-sensor x dual-lens performance) eliminates any possibility of focus shift and color distortion caused by IR-bleed. If there is absolute need for 24/7 video vigilance, the ZX55 is your camera to specify.

Moonlight-IR™

CCTV-Infrared
Accessory

The MoonLight-IR™ is a low-voltage Solid State infrared illuminator comprised of a 30 LED array, heat sink, dual - mode voltage regulator and a power controller. Encased in a compact aluminum housing, the MoonLight-IR™ is designed to mount onto the 1/4 - 20 threads of CCTV cameras in minutes. Pigtail power leads are provided to connect to the rear power blocks of 12 VDC or 24 VAC cameras. Requiring only 3.6 Watts of power, the MoonLight-IR™ can be installed to most cameras without the necessity to run extra wiring for power.



Ready Today for
Tomorrow's Technology...

New intelligent software for object tracking, scene analysis, face recognition, object recognition and number recognition all require 24/7 lighting in order to operate properly to deliver useful information.

The ZX55 is allowing these technology - based advances in security to operate accurately and reliably.

MOONLIGHT-IR FEATURES:

- Instantly converts "box cameras" to night vision effectiveness
- Easy instant install to 1/4 - 20 threads of conventional CCD cameras
- No cabling necessary
- Pulls power from camera power blocks
- 12 VDC or 24 VAC operation
- 30 LEDs of 850 nm or 940nm
- Control pot "dimmer" control
- Works with "color switching" or monochrome cameras
- Extreme performance to 50 feet with FSX-LXR camera

MECC

Modular Expandable Control Components

MECC™ CCTV Performance Accessories

Integrated Day Night™ cameras by Extreme CCTV® now have the option of extreme versatility and expanded functionality through a series of "Modular Expandable Control Components" (MECC™). First deployed in Afghanistan (2002) MECC™ has been totally re-engineered for a "Generation 2" design that offers new high performance RF wireless transmission and internet protocol networking. Night vision CCTV can now go wireless and into cyberspace. For extreme remote locations, MECC™ equipped IDN™ cameras can integrate with rechargeable batteries and solar or wind turbine chargers.

Performance Kit Number:
PK - EX82MECC1.5V1-8

- | | |
|-------------------------------|------------------------|
| 1.0 IDN Camera: | EX82MECC1.5 |
| 1.1 Video-Out Port | RCA Female |
| 1.2 Power-In Port | DIN Connector |
| 1.3 RF Transmitter - Embedded | 2.4 GHz |
| 1.4 Antenna - Detachable | X-18-0004 |
| | |
| 2.0 Back-Pack Battery: | BX82-7 |
| 2.1 Power Cable | CBL-18-0005 |
| 2.2 Power-in Port | |
| | |
| 3.0 Battery Pack Charger: | BX-CHG2
(not shown) |
| 4.0 Wall Bracket: | EXMB.006 |
| | |
| 5.0 Pole Mount Adaptor: | EXMB.015 |
| 5.1 Gear Clamps (4) | included |
| | |
| 6.0 RF Receiver: | RX27-R2 |
| 6.1 All-Weather Housing | included |
| 6.2 Wall Bracket | EXMB.023 |
| | |
| 7.0 Pole Mount Adaptor: | EXMB.015 |
| 7.1 Gear Clamps (4) | included |
| | |
| 8.0 Power Supply - Receiver: | EXPS.003 |
| (not shown) | |



EX82 MECC 1.5

EX82 MECC1.5 Wireless Day/Night Vision

- Rechargeable battery operation
- Wireless night vision to 100 ft (30m)
- No Plug. Just Play.™
- Transmit day or night vision
- Accurate color without IR bleed
- Night vision without focus shift
- i/o ports for power in and video out
- Detachable antenna



MECC 2 Series

EX82 MECC 2 Modular Expandable CCTV

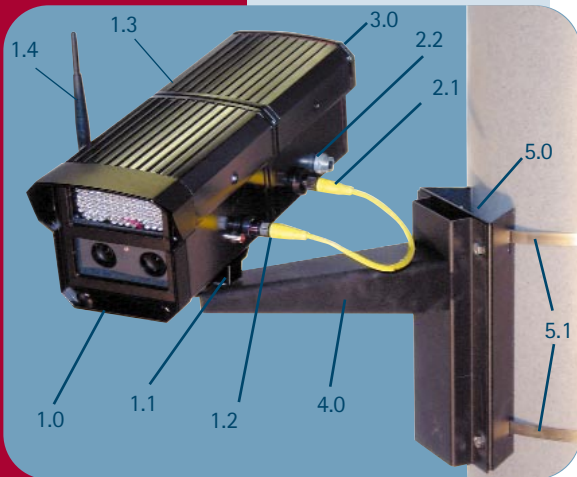
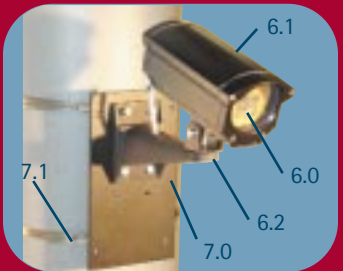
- Modular Expandable CCTV
- i/o ports allow instant integration of control functions
- i/o port for power-in
- i/o port for video-out / power out



EX82DX-IP

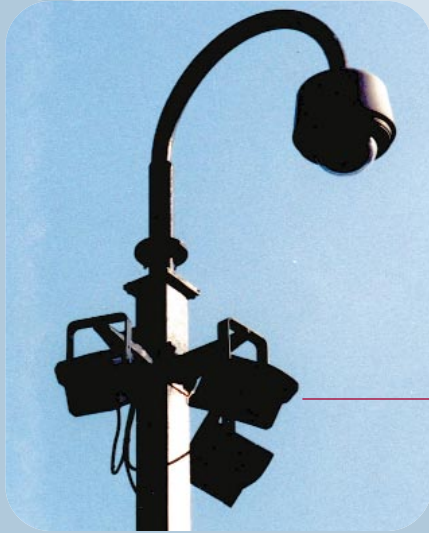
EX82 DX-IP Network IDN - IP Camera

- Color by day / Infrared by night
- Night vision beyond 30m. (100 ft)
- Automatic Event Capturing (in day or dark)
- Embedded Web Server
- View, control and record video remotely from any computer with an internet connection
- Select user password protection



EX82 MECC APPLICATIONS:

- Rapid Deployment CCTV
- Emergency Response CCTV
- Temporary CCTV
- Upgradeable CCTV
- Integrated Systems for CCTV
 - _ Fiber Optics
 - _ RF wireless
 - _ Satellite



Speed Dome Upgrade with SuperLED™ & UF500 Infrared

Perhaps millions of speed-dome cameras are being installed without the ability to see in the dark. Unless they are operating in businesses that are well lit, speed-domes can leave you non-secured in dark locations. Dark alleys, corridors and doorways can be specifically illuminated with infrared to ensure high signal / low noise video. Many modular chassis cameras within speed domes are IR sensitive day/night type. Given this superior performance specification, the addition of Extreme CCTV infrared will allow remarkable night time performance, even into the darkest of alleys over 100 meters away.

UF500 infrared await darkness to illuminate targeted scenes for an overhead speed dome camera.

INTEGRATION

Integration by Extreme CCTV

Camera Upgrades



UF500 Legacy

Dual UF500 infrared provide patented characteristic even-illumination. With 830nm infrared and an FSX800 camera, performance to 700 feet is achieved with high-signal pictures. A T-Bar adaptor (EXMB.012) perfectly fits into Pelco's PT780 pan-tilt motor to allow the installation of two UF500 infrared illuminators.



DXK-EH4718

A DXL (Dual Sensor X Dual Lens) kit designed for a full-size camera-lens combination allows precise optics control for day scenes and infrared-supported night scenes. All the camera optics are fitted onto adaptor plate (DXK-EH4718) for a precise fit into Pelco's popular EH4718L housing.



Thousands of government issued CCTV cameras installed throughout North America do not operate well under dark conditions. And when integrated to today's digital recording and transmission devices, most cameras are ineffective especially when they are required to deliver video information under dark night conditions. Yet there is vital need for constant vigilance under terrorist threat.

Several techniques are used NOW by professional security organizations in Britain to upgrade and make effective, CCTV surveillance to true 24/7 night-time capability. The terrorist threat there has been very real for decades. In Britain, coordinated proactive policing extends through their "homeland" in many ways.

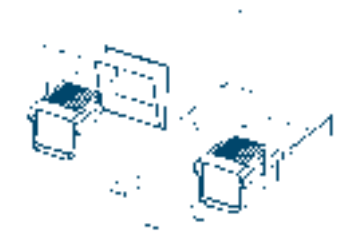
Conventional "flat-top" pan/tilt motors have been installed throughout America without the ability to see in the dark. Popular motors made by Pelco,

Vicon, Quickset and others can be supplemented with UF500, UFLED and SuperLED™ infrared by using T-Bar hardware adaptors that are specifically designed for these motors.

Pelco Motor UFLED



Vicon Motor UF500



Quickset Motor SuperLED



REG™

License Plate Reader

Precision Engineered for Intelligent Transportation Systems



License Plate Capture

REG™ is the complete solution for consistent reliable license plate capture under day and night conditions.

REG™ uses filtering to block visible light and emitted infrared to bounce off license plates for reading from its specially designed camera. At vehicle speeds of 60 MPH (100 KPH) and with the headlights-on in a typically dark scene, REG is able to capture the numbers off a license plate clear enough for software driven ANPR (Automatic Number Plate Reader) systems and for new DVRs (digital video recorders). Patents Pending.



- A vehicle in the night with its headlights on makes for an impossible shot for a normal camera.
- With REG™, the same scene is recorded under high-speed infrared capture to reveal the plates on the front of the vehicle.



REG-SL

REG Standard

- Number plate capture of moving vehicles
- External use / All Weather Design
- 24 hour coverage
- High reliability - low maintenance
- Long Life - Zero Lux Operation
- Achievable distance - up to 50 meters
- Ideal for use with ANPR software



REG-L

REG LED

- Easy, plug and play, for toll booth locations
- Combined camera and matched IR illuminator
- No focus shift between daytime & IR operation
- Integral bracketry and cable management
- Hi-resolution SX800 LXR CCD
- 24 hour - day/night plate reading
- High reliability - low maintenance
- Achievable distance - up to 7 meters (22 ft)



REG-D

REG Dual

- Effective views of plates and vehicles
- Two cameras and a matched IR illuminator
- Integral bracketry and cable management
- 24 hour - day/night plate reading
- High reliability - low maintenance
- Average life of illuminator - up to 10 years
- Achievable distance - up to 35 meters (115ft)



REG-WG

REG Wedge

- Ceiling Mount Wedge Housing
- For tight parkade entrances
- Combined camera and matched IR lighting
- Hi-resolution LXR number plate camera
- Discreet, compact design
- No focus shift between daytime & IR operation
- 24 hour - no other illumination required
- Achievable distance - up to 7 meters (22 ft.)



REG™ cameras capture the plates of vehicles as they exit a shopping mall in Sheffield England.



With REG-DVR™, you can capture, record, analyze, identify, and alarm on targeted license plates even in the dark of night at high speed.

REG-DVR™

REG-DVR™ is full-feature digital video recorder with embedded license plate reading software. As its name suggests, REG-DVR™ is compatible with REG license plate reading (LPR) cameras that can capture license plate data under day or night conditions, at high speed and with high-beam headlights on. REG-DVR™ incorporates a learning characteristic called a neural network that allows for constant upgrading of LPR capability. REG-DVR™ also incorporates advanced DVR features including remote access, and synchronous record, replay and archive.

REG-DVR

- Full Feature DVR with Automatic License Plate Reading (ALPR)
- Unprecedented reliability due to the neural network based character recognition
- Remote access and alarming of identified vehicles
- Up to 8 cameras can be monitored using one ANPR channel
- Capture, storage & viewing of number plate and wider overview images (single images or video sequences)
- Real-time number plate searching against multiple database



Consistently recognized for new product innovations by the Security Industry Association at ISC Expos in New York and Las Vegas "1998-2002"

Canadian Security Magazine

EX82DX-IP Award of Merit, Showcase of New Products 2003

Canadian Security Magazine

EX38N, Finalist, Showcase of New Products 2001

Detektor International (Scandinavia)

EX82-DXL, Finalist, Detektor International Award 2001, CCTV Category

MVD/Gardiner (UK)

EX82-DXL, Most Innovative Product 2002

Security Industry Association

REG™, Product Achievement Award 2002, New Product Showcase, CCTV Category

International Security Conference (ISC) - West

ADI Best New Vendor Award 2002

IFSEC

Industry Award 2002, Vista Brand VNPR License Plate Reader, Extreme CCTV OEM Partner

- All of the proprietary designs shown are developed by Extreme CCTV engineers in England, Canada and the USA and are protected by international patent law where applicable.
- UF500 Infrared Illuminator is filed under US Patent.
- EX50 and EX60 Explosion Protected products are filed under US Patent.
- Quattro by Extreme CCTV has US Patent Pending status.
- CNG™ - Conical No-Grip has US Patent Pending status.
- EB-IR Infrared Illuminator has US Patent Pending status.
- EX36, EX45, EX48, EX49, EX82 have US Patent Pending status.
- Most other Extreme CCTV products are covered under related patent filings.
- Extreme CCTV® is a registered trademark of Extreme CCTV Inc.
- See the Light. Get the Picture.® is a registered trademark of Extreme CCTV Inc.
- No Plug. Just Play.™ is a trademark of Extreme CCTV Inc.
- OEM private label products are also available to select partners.
- Global engineering support is available by fax, email and telephone.
- Specifications and performance charts available to security professionals.
- Specifications are subject to change without notice.
- Extreme CCTV products are sold through professional security providers.



Extreme CCTV delivers. Every day.
We offer fast reliable delivery, door-to-door to virtually anywhere in the world. This service includes customs clearance to most locations in the world.



Award winning REG™ cameras are dedicated to capture license plates in day, dusk and dark conditions for years without requiring maintenance.



USA 3873 - C Airport Way
PO Box 9754
Bellingham, WA 98227

CANADA Extreme CCTV Inc.
3021 Underhill Avenue
Burnaby, B.C.
V5A 3C2

TOLL FREE 1.888.409.2288
TEL 1.604.420.7711
FAX 1.604.420.3300

EUROPE Extreme CCTV UK Ltd.
Colbourne Cres.
Cramlington, Northumberland
United Kingdom, NE23 1WB

TEL +44 (0) 1670.730.187
FAX +44 (0) 1670.730.188

EMAIL sales@ExtremeCCTV.com
WORLD WIDE www.ExtremeCCTV.com



See the Light. Get the Picture.®