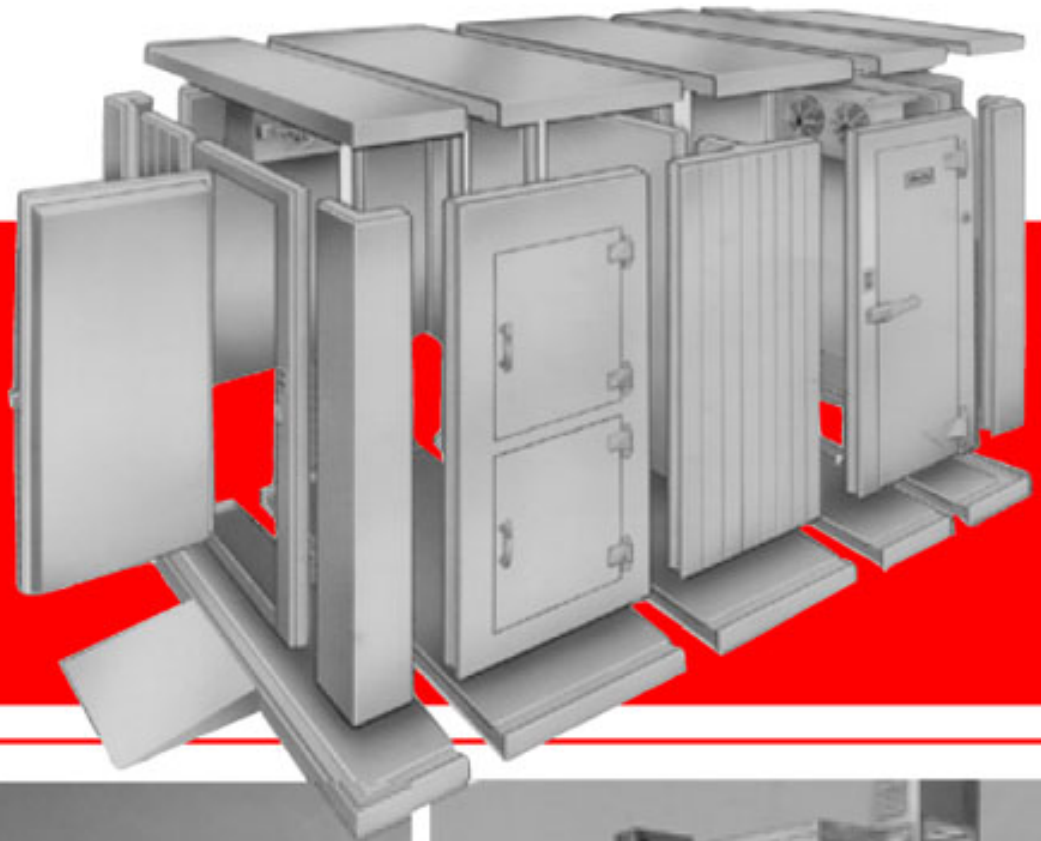


# Walk-In Coolers, Freezers, Refrigerated Warehouses and Distribution Centers

From **BMIL** *International, Inc.*



Refrigerated Products-  
Proven Dependable



BALLY™ Pre-Engineered, Pre-Fabricated walk-in coolers, freezers and refrigerated warehouses from BMIL INTERNATIONAL, INC. offer the most cost effective and reliable structures of their kind in today's market. This brochure depicts some of the construction details and features that make the BALLY/BMIL difference.

While the BALLY™ product excels in its intended use, it is only part of the story. BMIL INTERNATIONAL, Inc.'s leadership has developed with superior BALLY™ products as a core and with the addition of world-renowned products to present a value-oriented package.

We back our products with over 45 years of knowledge in the cold storage industry. Our customers receive superior engineering support from an established team of experts. An investment in a BALLY™ structure is protected by a BALLY™ 10-year warranty on panels, but more importantly, by over 45 years as the premier manufacturer of pre-engineered, pre-fabricated panels in the world.

Today, we are responding quickly to the requirements of our clients with state-of-the-art computerized manufacturing equipment and tools to provide a "concept to completion approach".



Shandong Peanut Warehouse, Shandong, PRC  
28 x 85 x 5 m. 8 compartment



Hipac/Hanshell Inniss Bridgetown, Barbados  
Food Processing/ Cold Storage  
Frozen Food Storage -25°C



## PANEL CONSTRUCTION

BALLY™ panels are poured-in-place polyurethane foam, which are clad with a variety of metal finishes. Inch for inch, BALLY™ polyurethane has more than twice the insulating efficiency of fiberglass or polystyrene and more importantly is superior to foamed-in-placed polyurethane panels.

Interior skins are available in stucco embossed aluminum, stucco galvalume®, stainless steel, and smooth white polyester over galvanized steel, as well as our standard white polyester over stucco galvanized steel. Exterior skins are available in all of these finishes with stucco white profile panels especially suited for refrigerated warehouses.

BALLY™ superior poured-in-place polyurethane panels are available in 4", 5", and 6" thickness' (102, 127, 152 mm) and heights up to 28'0" (8.53m), offering excellent insulating values. Panels are listed by UL as well as Factory Mutual and currently meet all worldwide criteria for CFC reduction. Poured-in-place polyurethane foam bonds tenaciously to the interior of treated metal skins, which provides for a panel made of 100% insulation, which is both light in weight and exceptionally strong. BALLY'S foam system has been tested in accordance with A.S.T.M. test No. E-84-84 and is a Class I material with flame and smoke spread less than 25/450.

BALLY™ tongues and grooves on panel edges are precisely formed in manufacturing fixtures assuring an extremely tight and sanitary joint complete with vinyl gasket material, eliminating the need for caulking, batten strips, or other fastening means.

BALLY™ Speed-Lok® joining mechanisms, manufactured by BALLY™, facilitates the secure, accurate, and fast joining (and when necessary disassembly) of panels.

When BALLY™ panels are assembled, all panels including vertical to vertical, ceiling to ceiling, and ceiling to verticals, are interconnected with BALLY™ Speed-Lok® mechanisms. This assembly, with integral 2" wide steel straps, forms perimeters of steel that hold panels securely and reliably together making extensive use of the BALLY™ **diaphragmatic panel action**.

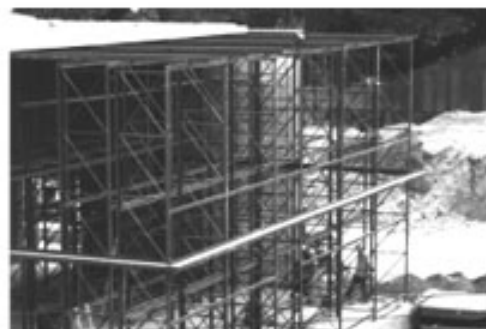
## SIMPLE ASSEMBLY

BALLY™ pre-engineered, pre-fabricated panels from BMIL are made for fast and easy installation, and when necessary, disassembly and reassembly. Lightweight panels are joined and locked together with BALLY™ Speed-Lok® mechanisms.

1. Floor panels (when desired or required) are placed into position and leveled. Floor panels are Speed-Loked together.
2. Wall assembly is started by speed-locking a corner and wall panel together.
3. Wall assembly is completed.
4. Ceiling assembly is started by speed-locking a ceiling end panel to sidewalls.
5. Balance of ceiling panels are completed.



Consortio Fruticola Mexicano Manzanillo, Mexico 34 x 15 x 6m high  
• 2 compartment Grape Storage +2°C



Unilever S.A., San Salvador, El Salvador  
350 Pallet, Outdoor Rack Supported  
Ice Cream Storage/ Distribution -28°C



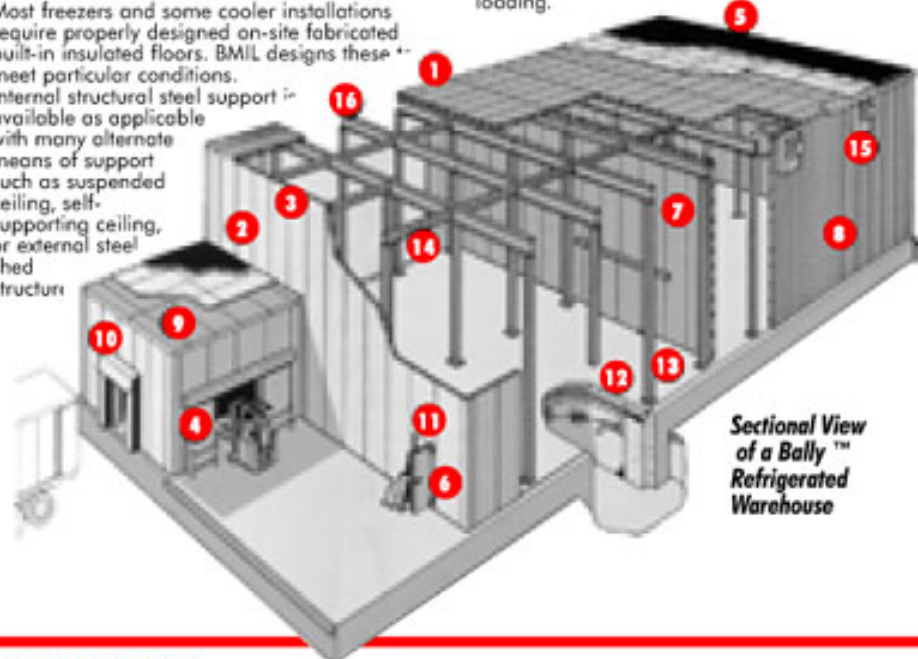
Robinson Club, Hurgada, Egypt  
Pastry Cooler, Main Kitchen

## TYPICAL CONSTRUCTION FEATURES OF A BALLY™ REFRIGERATED WAREHOUSE AS DESIGNED BY BMIL INTERNATIONAL, INC.

1. BALLY™ utilizes standard size pre engineered pre-fabricated insulated panel sections.
2. BALLY™ panels are available in a wide variety of interior/exterior metal skins. (Please refer to page 2).
3. BALLY™ superior poured-in-place polyurethane insulation is available in 4", 5", 6" thickness (102, 127, 152 mm).
4. Industrial cold storage doors are available in manual or power operation as single or double horizontal slide, vertical rise, sectional overhead, and infitting.
5. PVC or EPDM membrane roofs supplied by BMIL are complete with gutters, downspouts and necessary detailed installation drawings.
6. BALLY™ hinged entrance doors are available in various sizes to suit an installation, and are complete with available panic hardware.
7. Partition wall panels, identical to exterior panels, may be attached to verticals or ceiling panels by speed-loks® or use of available metal trim.
8. Exterior panels are available in architectural profile, typically USDA approved white polyester over stucco galvanized steel and up to 28'0" (8.53m) in a single tier. (Stacked verticals also available for higher applications).
9. Ante-rooms, loading docks, or vestibules, when required, are assembled using standard BALLY™ panels which can be attached to the main structure utilizing superior locking pin rails or alternatively with metal trim.

10. Dock seals, shelters, and additional accessories such as dock lights and dock levelers are available to suit a particular application.
11. Doors complete with ante-condensate heaters are available to suit a particular application to prevent condensation and frost formation.
12. Most freezers and some cooler installations require properly designed on-site fabricated built-in insulated floors. BMIL designs these to meet particular conditions.
13. Internal structural steel support is available as applicable with many alternate means of support such as suspended ceiling, self-supporting ceiling, or external steel shed structure.

14. Lateral steel bracing is designed and utilized as required.
15. BALLY™ refrigeration systems are designed by BMIL to suit a specific application and to provide cost effective means of temperature and humidity control.
16. Proper steel support varies with an individual warehouse and will suit local site conditions, construction regulations, and applicable wind, seismic, and snow loading.



Sectional View of a Bally™ Refrigerated Warehouse

## BALLY™ REFRIGERATION SYSTEMS FOR WALK-IN COOLERS, FREEZERS, POWER BLAST® AIR BLAST FREEZERS, AND REFRIGERATED WAREHOUSES

BALLY™ refrigeration systems are properly selected and designed by BMIL INTERNATIONAL, INC. to suit specific temperature and humidity conditions. BALLY™ refrigeration systems are extremely energy efficient and available as THERMOBALANCE™, THERMOWELD™, and THERMOSEVER™ (hot gas defrost) as well as multiple indoor compressor systems with remote air-cooled condensers. These systems satisfy all of the critical requirements of the BALLY™ insulated envelope. BALLY™ refrigeration systems are extremely easy to install with available pre-assembled remote components and economical to operate. Refrigeration systems are designed to minimize down time during the life of the unit. All individual system components are of the highest quality and

selected from the world's leading manufacturers of refrigeration system components. There are virtually hundreds of different configurations that are available including high, medium, and low temperature configurations utilizing single stage hermetic or semi-hermetic compressors and when necessary internally compounded two-stage compressors for applications requiring temperatures of -40°F (-40°C) and below. BMIL and BALLY™ offer a complete line of evaporators, air-cooled condensers, packaged outdoor air-cooled condensing units indoor compressor/receiver units, and other products to attend to the whole spectrum of refrigeration needs. Write to us, call us, or e-mail us your specific requirements so that we can provide you with the BALLY™ refrigeration system to meet your needs. Visitors are welcome to browse our web-site at [www.bmil.com](http://www.bmil.com).



Medium Profile  
BB Evaporators



Packaged  
outdoor air cooled  
condensing units 1/2 - 30 HP



Multi-fan Air-  
Cooled Condenser  
550 - 850- 1140 RPM

# JAMISON INDUSTRIAL COLD STORAGE DOORS

The quality and reliability of the cold storage door is as important, if not more important, than the insulated enclosure. It is for this reason that BMIL INTERNATIONAL, INC. choose to represent JAMISON, the world's recognized leader, since 1906, of cold storage doors in the industry. BMIL INTERNATIONAL, INC. represents JAMISON products worldwide, which offers the greatest degree of quality and reliability whether on a BALLY™ pre-engineered, pre-fabricated insulated enclosure or insulated enclosures as manufactured by others. Ensuring that one of the only moving parts of an insulated refrigerated enclosure represents Jamison quality, is a truly wise investment.

JAMISON Doors offer the following important features and advantages:

- Reduce your refrigeration costs, and dangerous conditions such as ice and condensation caused by the infiltration of hot humid air, with Jamison's Diamond-Trac® Roller system with "down-and-in" motion.
- Powertron® electro mechanical doors offer high-speed operation permitting the entrance and exit of products rapidly and efficiently reducing the time where infiltration can occur.
- JAMISON "DS" Powertron® operator with 5-year guarantee is considered the most reliable in the industry. The electric all-gear drive operator has been tested through 2 million opening and closing cycles. Typical doors open at 80" per second bi-parting, 40" per second single slide.
- JAMISON utilizes heavy-duty components suitable for high-speed industrial use and offering extremely low maintenance.

JAMISON offers a complete line of cold storage doors. JAMISON doors are utilized extensively in new installations, or for replacement of existing doors in existing facilities. Please consult with BMIL INTERNATIONAL, INC. or visit our website at [www.bmil.com](http://www.bmil.com) for advice in selecting a new door or selecting a replacement door, which will be most appropriate for your needs and the doors intended use.



## JAMISON



### JUST A SELECT FEW OF HUNDREDS OF PROJECTS SUCCESSFULLY COMPLETED WORLDWIDE

- Conrad Hotel — Cairo Egypt
- Desert Beach Hotel — Hurghada, Egypt
- Sheraton Hotel — Soma Bay, Egypt
- Atlantic Cold Store — Tema, Ghana
- Conafic Ltd. — Tema, Ghana
- Gateway Coldstorage — Accra, Ghana
- Nyame Yie — Tema, Ghana
- Grand Serrail — Beirut, Lebanon
- Hemaq Ghina & Sons — Mauritius
- King's Food — Port Louis, Mauritius
- Chevron Banana Base Oil Exploration Facility — Zaire
- ICRISAT Seed Storage Facility — Zimbabwe
- Conrad Hilton International — Hong Kong
- Dairy Farm Ice — Hong Kong
- Airport Catering Facility — New Delhi, India
- Kodak — Delhi, Cuttack, Poona, India
- Taj Hotel — India
- Hyatt Regency Hotel — Bandung, Indonesia

- Alto Vista Hotel — Philippines
- Proctor & Gamble — Philippines
- Inter-Continental Hotel — Colombo, Sri Lanka
- Stassen Import/Export — Colombo, Sri Lanka
- Evergreen Catering Facilities — Taiwan
- Grand Hotel Flight Kitchen — Taiwan
- Catara Fisheries — Vietnam
- Equatorial Yangon Hotel — Yangon
- Dunkley's Dairy — Devonshire, Bermuda
- Borda Azul — Costa Rica
- Fructo CR, S.A. — Alajuela, Costa Rica
- Del Tropic Foods — San Salvador, El Salvador
- Industrias Unisola — El Salvador
- Marriott Hotel Presidente — San Salvador, El Salvador
- Foremost Dairies — Guatemala
- DIDCO — Georgetown, Guyana
- Bachoco — Mexico
- Chilchota Alimentos — Gomez Palacio, Mexico

- Moquilodora Patelera, S.A. de C.V. — Oaxaca, Mexico
- Nestle — Mexico, D.F.
- OXXO — Guadalajara, Mexico
- Bonloc — Panama
- Unilever — Panama
- Avipac Inc. — Puerto Vaccamonte, Panama
- Nestle Panama — Panama City, Panama
- New Zealand Milk Products — Lima, Peru
- Reykjavik Research Institute — Reykjavik, Iceland
- Beskin Robbins — Moscow, Russia
- Ben & Jerry's — Moscow, Russia
- Ministry of Health — Oman
- Unilever — Pakistan
- Conrad Hilton International — Istanbul, Turkey
- Guam United Warehouse — Guam
- Warner Lambert — Puerto Rico
- Hunter Foods — St. Thomas, USVI
- St. Croix Dairy — St. Croix, USVI





# Architectural Specifications:

TO USE THESE SPECS, SIMPLY CHECK OR WRITE IN THE APPLICABLE DETAILS IN EACH SECTION

## 1.

Sectional walk-in refrigerators and/or freezers complete with doors shall be manufactured by Bally Refrigerated Boxes, Inc., and supplied by BMIL International, Inc. Overall size of walk-in shall be \_\_\_ long x \_\_\_ wide x \_\_\_ high. Fill in lengths and widths from this list: 5'10", 6'9-1/2", 7'9", 8'8-1/2", 9-8", 10-7-1/2", 11-7", 12'6-1/2", 13'6", 14'5-1/2", 15-5", 16-4-1/2", 17'4", 18'3-1/2", 19'3", 20'2-1/2", 21'2", 22'1-1/2", 23'1", 24'1/2", 25'0", 25'11-1/2", 26'11", 27'10-1/2". Longer or wider buildings are available in additional 11-1/2" increments.

Fill in heights from this list (heights shown are with floor; subtract 4" for less-floor units): 7'6", 8'6", 9'6", 10'6", 12', 13', 14', 15', 16', 17', 18', 19', 20'4", 21-4", 22-4", 23'4", 24'4", 25-4", 26-4", 27-4", 28'4". (Single length verticals)

Taller buildings are available in additional 12" increments, with stacked vertical panels.

## 2.

Foam core of panels shall be Underwriters Laboratories-listed as having flame spread of 25 or lower and smoke generation of 450 or lower when tested in accordance with ASTM E-84-76. Panels shall be approved by Factory Mutual as a Class I building type. They shall be foamed using **enovate3000** Zero Ozone Depletion Potential (0 ODP) expanding agents and shall meet all current international standards.

## 3.

All work and materials shall be in full accordance with local and/or state ordinances, and with any other prevailing rules and regulations.

Bally Refrigerated Boxes, Inc./BMIL International, Inc., is not responsible for furnishing items required by the regulations, unless specified or shown on the drawings or contained in the specifications.

## 4.

Panels shall consist of interior and exterior metal skins precisely formed with steel dies and roll-form equipment and thoroughly checked with gauges for accuracy. The metal skins shall be placed into heated molds and liquid urethane injected between them. For extra rigidity, the exteriors of all vertical panels except corners and door panels shall have vertical grooves spaced on 5-3/4" centers. Urethane shall be foamed-in-place (poured, not frothed) and, when completely heat-cured, shall bind tenaciously to the metal skins to form an insulated panel. Panels shall contain 100 percent urethane insulation and have no internal wood or structural members between the skins. To insure tight joints, panel edges must have foamed-in-place tongues and grooves with a flexible vinyl gasket on the interior and exterior of all tongue edges. Gaskets shall be resistant to damage from oil, fats, water and detergents and must be NSF-approved. Panel thickness: 4" \_\_\_ - 5" \_\_\_ - 6" \_\_\_.

## 5. Exterior Finish

- A. \_\_\_ Stucco-embossed Galvalume steel
- B. \_\_\_ Smooth galvanized steel with white polyester painted finish
- C. \_\_\_ Stainless steel
- D. \_\_\_ Stucco-embossed aluminum
- E. \_\_\_ Stucco-embossed aluminum with white polyester painted finish
- F. \_\_\_ Stucco-embossed galvanized steel with sand-tan polyester painted finish
- G. \_\_\_ Stucco-embossed galvanized steel with white polyester painted finish
- H. \_\_\_ Kynar over steel

I. \_\_\_ Sandex stone-textured finish over steel

**6. Interior Finish**

- A. \_\_\_ Stucco-embossed Galvalume steel
- B. \_\_\_ Smooth galvanized steel with white polyester painted finish
- C. \_\_\_ Stainless steel
- D. \_\_\_ Stucco-embossed aluminum
- E. \_\_\_ Stucco-embossed aluminum with white polyester painted finish
- F. \_\_\_ Stucco-embossed galvanized steel with sand-tan polyester painted finish
- G. \_\_\_ Stucco-embossed galvanized steel with white polyester painted finish

**7.**

All panels except corner panels shall be made in 23" and 46" widths, fully interchangeable for fast, easy assembly. Panels 11-1/2", 17-1/4" or 34-1/2" wide are to be furnished only if required to fit the allocated space. To assure perfect alignment and maximum strength, corner panels shall employ a right-angle configuration with exterior horizontal dimensions of 12" on each side. Vertical panels (except corner panels) shall be supplied in a single length up to 28' high (16' high for installations with aluminum or stainless steel finish). For outdoor applications, single-height panels greater than 19' (16' for aluminum) or multi-tiered vertical panels must be secured to horizontal girts mounted between building columns.

**8.**

Panels shall be equipped with Bally Speed-lok diaphragmatic joining devices. The distance between locks shall not exceed 46". Each device shall consist of a cam-action, hooked locking arm placed in one panel, and a steel rod positioned in the adjoining panel, so that when the arm is rotated, the hook engages the rod and draws the panels tightly together with cam action. Arms and rods shall be housed in individual steel pockets. Pockets on one side of the panel shall be connected to pockets on the other side in width, by the use of 2"-wide metal straps set into and completely surrounded by the insulation. When panels are joined together, these straps shall form lock-to-lock connections for extra strength.

**9. Floor Construction -**

Bally furnishes floor panels only. All construction and preparation for Bally floor panels must be provided by others. Floor panel construction shall be similar to that described in sections 7 and 8 above, but with a heavier-gauge interior skin; thickness of floor panels may be different than that of vertical panels. 4"-thick floor panels can be NSF or non-NSF. 5"- and 6"-thick panels are non-NSF.

- A. \_\_\_ Light-usage Floor - Floor panels shall be placed on a concrete pad and leveled. Where inside floor and outside platform must be level, the concrete pad shall be made with a depression deep enough to receive the Bally floor panels.
- B. \_\_\_ Heavy-usage Floor - Floor panels shall be placed on a depressed concrete pad and leveled. After supporting steel is assembled, a 4" reinforced concrete wearing floor shall be poured. The depression shall be deep enough to make interior and exterior finished floors the same height.
- C. \_\_\_ Built-in, Insulated Floor - The floor shall be constructed on the job site. It shall consist of a depressed, reinforced concrete sub-slab. Slab urethane shall be built into this depressed slab and tile floor or 4" reinforced concrete wearing floor installed on top. Wall panels shall be fastened to this floor. Adequate drainage and ventilation or other heat source must be provided beneath and around all construction.

**Floor Panel Finishes**

- A. \_\_\_ 14 ga. galvanized steel
- B. \_\_\_ 16 ga. stainless steel

**Special Construction Floor Panels**

- A. \_\_\_ Reinforced Floor Panels - 4"-thick insulated floor panels contain non-conductive structural imbeds for maximum strength without freezing. Standard steel plate overlay adds strength. Panels support up to 1200 pounds per square foot (evenly

distributed) and support pallet jacks or light forklifts with total weight of up to 2000 pounds per wheel (diamond plate overlay required).

### **Hinged Entrance Door Panels**

Number of doors \_\_\_\_\_

Width and height of each door

---

*(Select dimensions from this list.-)*

Widths: 30", 36", 42", 48", 60"

Heights: 78", 84"

Number of doors, location and direction of swing is specified on the plans. Doors are in-fitting and flush-mounted.

Construction shall be as specified in 7.

Magnetic core, thermoplastic gaskets installed on the top edge and both sides of the door shall keep the door in a closed position, forming a tight seal; a flexible, dual-blade wiper gasket shall be installed at the bottom of the door. NSF-approved gaskets shall be replaceable and resistant to damage from oil, fats, water and detergent.

A heavy U-channel structural steel frame around the perimeter of the door opening shall prevent racking or twisting; steel frame is to be reinforced for hardware attachment.

Anti-condensate heater wire shall be concealed behind the metal edge of the door jambs. The door panel shall also include a vapor-proof interior lamp; junction box for 120v., 60 cycle, 1 phase, a.c. service (15 amp maximum); 2"-dia. flush-face dial thermometer (field mounted on 60" wide doors); and weather hoods for outdoor installations.

### **Hardware**

A. \_\_\_\_\_ For doors with 30" or 36"-wide openings: two spring-loaded, self-closing hinges; cylinder latch with provision for padlocking and safety release mechanism; door closer

B. \_\_\_\_\_ For doors with 42", 48" or 60"-wide openings: hinges are uplift type with blades not less than 9" long; latch shall include provision for padlocking and safety release mechanism.

### **Hardware Finishes**

A. \_\_\_\_\_ For walk-ins finished with stainless steel polished aluminum

B. \_\_\_\_\_ For walk-ins with finishes other than stainless steel - satin aluminum

C. \_\_\_\_\_ For walk-ins with any finish (if desired) chrome-plated

### **Door Options**

A. \_\_\_\_\_ **Hinged Super Entrance Door**

Construction is identical to that of a standard door except that a third hinge is added and the door and portion of door panel are protected by diamond-plate kick panels covering the bottom 32" on interior and exterior. Show number and size of super doors.

---

*(Check following options as desired.)*

B. \_\_\_\_\_ **Observation Window** in Entrance Door (a 14-1/2" x 24" heated observation window shall be provided in the entrance door. It consists of three panes of glass with sealed air spaces between them. The window shall be supplied with heated glass and frame and unit shall be removable for replacement.)

C. \_\_\_\_\_ **Mortise Lock** - Heavy-duty, dead-bolt lock with full safety release capabilities. Mortise lock installations shall also be provided with stainless steel pins engaging the door frame on the hinged side.

D. \_\_\_\_\_ **Strip Curtain** - Sturdy, NSF-approved, clear-vinyl strip curtains shall permit easy passage while minimizing air infiltration.

**11. Options** - check as desired

A.  **Pressure Relief Port** (required for all freezers)

B.  **Partition Walls** - Insulated, 4"-thick metal-clad panels shall be provided to form separate compartments within the walk-in. A non-conductor strip must be built into all exterior panels at the joints where partitions butt to prevent transfer of heat from one compartment to another. Partition panels shall be Speed-Lok'ed to these panels. Construction shall be as specified in 7 above.

C. **Roof Options** - One of the following types must be used for any outdoor installation:

Sectional prefab metal roof shall be used with structures installed outdoors on buildings of any length but not exceeding 34'7" in width. Roofs shall be made of stucco-embossed aluminum.

Single-piece, pre-sized membrane roof system; maximum dimensions: 34'7" x 34'7".

Built-up type by others.

**Alarm Systems**

Audio-Visual Alarm System

Audio-Visual Alarm with digital temperature readout Hi set point only

Audio-Visual Alarm with digital temperature readout Hi Low set point with dry contact

E.  **Double-swing Cart Door**

F. **Reach-in Doors** for Product Loading (insulated solid type)

Insert correct sizes: 18-1/2" x 30" or 30" x 30"

Single  Size \_\_\_\_\_

Double  Size \_\_\_\_\_

G. **Glass Display Doors**

Number  Size \_\_\_\_\_

H. **Wire Shelving**

Cantilevered  Freestanding

No. of tiers  Finish

Width

**Other Options**

\_\_\_\_\_  
\_\_\_\_\_  
\_\_\_\_\_  
\_\_\_\_\_  
\_\_\_\_\_  
\_\_\_\_\_



**Mechanical Refrigeration**

\_\_\_\_\_ Hermetic (or) \_\_\_\_\_ Semi-hermetic

\_\_\_\_\_ Self-contained

\_\_\_\_\_ Pre-assembled remote

\_\_\_\_\_ Condensing unit:

\_\_\_\_\_ Indoors (or) \_\_\_\_\_ Outdoors

Horsepower \_\_\_\_\_

Voltage \_\_\_\_\_

Phase \_\_\_\_\_

Cycles \_\_\_\_\_

Low-ambient kit (winter controls) \_\_\_\_\_

(For multi-compartment units, provide plan view with compartment temperatures.)

**13. Warranties**

Bally shall warrant that any part of the structure it supplies (except the refrigeration system and its related accessories) is free from defects in materials or workmanship under normal use and service. The insulated panel portion of the structure is warranted free from defects under normal use and service for a period of 10 years from date of installation (but in no event shall the warranty be in force for more than 10 years and 6 months from the date the product was first shipped by Bally). Panel surface condition is warranted free from defects under normal use and service for one year from installation, provided the panel is stored and installed according to Bally's instructions. Mechanical (including hardware, gasketing, Speed-lok assemblies, aluminum weather roofs) and electrical components, except refrigeration systems (which are covered by a separate warranty) are warranted to be free from defects under normal use and service for one year from date of installation. (In no case shall this portion of the warranty be in force for more than one year and six months from the date the product was first shipped by Bally.) The warranty shall not include any labor charges for replacement or repair of defective parts or refrigeration. Full warranty information is to be provided with the walk-in.



For assistance in filling out this form, please contact BMIL International at [bmil@bmil.com](mailto:bmil@bmil.com), or Tel: (212) 898-9699, Fax: (212) 514-9234 or by mail at BMIL International, Inc., 61 Broadway Suite 1900, New York, NY 10006-2701 - [www.ballyinternational.com](http://www.ballyinternational.com) [www.bmil.com/bally](http://www.bmil.com/bally)