

# Gentle & Soothing Lotion Soaps

Biodegradable lotion soaps leave the skin clean and fresh with a pleasant fragrance. Contains emollients that replace natural oils to condition the skin. Pasteurized to kill bacteria that cause dermatitis and chapping.

## WhiskLotion 100 - Pink Lotion Soap



A pink, lotion soap developed for general use. Cleans hands and face and rinses off easily leaving a pleasant fragrance. Recommended for office and administrative locations.

## WhiskLotion 105 - Yellow Lotion Soap Our Most Popular Lotion Soap!

A heavy-duty, yet gentle, yellow lotion soap. It is formulated for both office and industrial environments where powerful cleaning and moisturizing capabilities are desired.



## WhiskLotion 115 - White Lotion Soap

A white, pearlescent soap with a heavy body recommended for applications where economy is a primary concern.



## WhiskLotion 175 - Body & Shower Lotion Soap

A white, premium soap, with a faint floral fragrance. Use it to clean hands or, in the shower to clean the scalp, hair and complete body. Produces a high lather and completely rinses off, leaving the body clean and fresh.



## WhiskLotion 120 - All-Purpose Soap

An economical all-purpose soap with a rose tinted color and fresh, fruity fragrance. A light viscosity soap for use in all dispensers and centralized systems.



	WhiskLotion 100 Pink Lotion Soap	WhiskLotion 105 Yellow Lotion Soap	WhiskLotion 115 White Lotion Soap	WhiskLotion 120 All-Purpose Lotion Soap	WhiskLotion 175 White Shower Soap	Package Description	No./Case
Stock Number	WL-100-12-24	WL-105-12-24	WL-115-12-24	WL-120-12-24	WL-175-12-24	12 Fl. Oz. Pump Bottle	24
	WL-100-37-4	WL-105-37-4	WL-115-37-4	WL-120-37-4	WL-175-37-4	37 Fl. Oz. Pump Bottle	4
	* WL-100-800-12	WL-105-800-12	WL-115-800-12	WL-120-800-12	WL-175-800-12	800 ml Bag-in-Bo	2
	* WL-100-D-4	WL-105-D-4	WL-115-D-4	WL-120-D-4	WL-175-D-4	3.5 Liter D Bottle	4
	* WL-100-FT -4	WL-105-FT -4	WL-115-FT -4	WL-120-FT -4	WL-175-FT -4	1 Gallon Flat Top Bottle	4
	* WL-100-LN-4	WL-105-LN-4				1 Gallon Long Neck Bottle	4
	*		WL-115-SN-4	WL-120-SN-4	WL-175-SN-4	1 Gallon Short Neck Bottle	4
	* WL-100-55	WL-105-55	WL-115-55	WL-120-55	WL-175-55	55 Gallon Drum	N/A

\* Product dispensers for products in this row are shown on pages 9 and 10.

# Waterless Hand Cleaners

Whisk Hand Cleaners loosen and dissolve tenacious soils. Formulated with only the safest additives to remove oil, grease, paint, glue, sealant, tar, asphalt, and other tacky materials. Product easily flows into cracks and crevices, and under fingernails to loosen dirt for easy removal.

## Whisk Hand Cleaner 200

### Waterless/Water Soluble Hand Cleaner Our Most Popular Hand Cleaner!

A heavy-duty, white, paste hand cleaner that can be used with or without water. It is ideal for use in manufacturing plants, printing plants and in the field. Can be used with water in wash rooms. It can also be used at an employee's workbench, and simply wiped off with a towel, without water.



## Whisk Hand Cleaner 210

### Waterless Hand Cleaner

Our heaviest duty, waterless hand cleaner! For use by roofers, asphalt companies, paint shops, engine rebuilding shops, transmission shops, lube shops, gas stations, printing shops, or any application requiring extra solvency. This is a true waterless hand cleaner that dissolves soil for easy removal with a cloth or paper towel. Contains emollients to keep the skin soft and supple.



## Whisk Hand Cleaner 220

### Waterless/Water Soluble Hand Cleaner

A heavy-duty, paste hand cleaner with natural orange extracts for use with or without water. Natural orange extracts provide the

solvency for removing difficult soils. Leaves a mild, pleasant orange fragrance. The all-weather formulation makes this product ideal for outdoor applications such as construction.



## Whisk Hand Cleaner 221

### Waterless/Water Soluble Hand Cleaner

A heavy-duty, paste hand cleaner with pumice and natural orange extracts for use with or without water. Natural orange extracts plus pumice provide the solvency and scrubbing necessary for removing the most difficult soils. Leaves a mild, pleasant orange fragrance. Pumice makes this product most practical for extremely difficult cleansing applications where water is available.



	Hand Cleaner 200 White Waterless/Water Soluble	Hand Cleaner 210 Yellow Waterless Only	Hand Cleaner 220 Orange Waterless/Water Soluble	Hand Cleaner 221 Orange Waterless/Water Soluble with Pumice	Package Description	No./Case
Stock Number	W H-200-05-24	W H-210-05-24	W H-220-05-24	W H-221-05-24	5 Fl. Oz. Squeeze Tube	24
	W H-200-24-12	W H-210-24-12	W H-220-24-12	W H-221-24-12	24 Fl. Oz. Squeeze Tube	12
	W H-200-26.5-12	W H-210-26.5-12	W H-220-26.5-12	W H-221-26.5-12	26.5 Oz. Plastic Tub	12
	* W H-200-32-12	W H-210-32-12			32 Oz. Cardboard Can	12
	* W H-200-4.5-6	W H-210-4.5-6	W H-220-4.5-6	W H-221-4.5-6	4.5 lb. Plastic Can	6

\* Product dispensers for products in this row are shown on pages 9 and 10.

# Heavy-Duty Soaps with Grit

For heavy-duty applications where lotion soaps and other cleaners need the additional help of pumice to mechanically remove the dirt.



## WhiskPower 250 - Green Lotion with Pumice

Green lotion soap fortified with pumice for additional scrubbing power. It is formulated for industrial environments where powerful cleaning and moisturizing capabilities are desired, such as assembly plants and machine shops. It is biodegradable, rinses in water, and leaves a clean fragrance to the hands when finished.

## WhiskPower 260 - Orange d-Limonene Lotion Soap & Pumice

Contains orange extracts and is 100% biodegradable. It cleans by using natural solvents to dissolve and emulsify dirt and grime.

The addition of pumice aids in breaking the caked dirt away from the skin. Completely water soluble, rinses with water, and when the hands are dried, they are left with a fresh citrus scent.



	WhiskPower 250 Green Lotion Soap with Pumice	WhiskPower 260 Orange Lotion Soap with Pumice	WhiskPower 270 Blue Lotion Soap w/Plastic Scrubbers	WhiskPower 280 Tan Lotion Soap w/Walnut Shells	WhiskPower 292 Paint Removing Lotion Soap with Pumice	Package Description	No./Case
Stock Number	* W P-250-37-4	W P-260-37-4	W P-270-37-4	W P-280-37-4	W P-292-37-4	37 Fl. Oz. Pump Bottle	4
	* W P-250-800-12	W P-260-800-12	W P-270-800-12			800 ml Bag-in-Box	12
	* W P-250-D-4	W P-260-D-4	W P-270-D-4	W P-280-D-4	W P-292-D-4	3.5 Liter D Bottle	4
	* W P-250-FT-4	W P-260-FT-4	W P-270-FT-4	W P-280-FT-4	W P-292-FT-4	1 Gallon Flat Top Bottle	4
	*† W P-250-SN-4	W P-260-SN-4	W P-270-SN-4	W P-280-SN-4	W P-292-SN-4	1 Gallon Short Neck Bottle	4
	* W P-250-55	W P-260-55	W P-270-55	W P-280-55	W P-292-55	55 Gallon Drum	N/A

\* Product dispensers for products in this row are shown on pages 9 and 10.

† Products in this row include four P-128-SN-4 pumps

# EXTRA Heavy-Duty Soaps with Grit

Extra heavy-duty, grit-based soaps that go beyond our standard grit soaps and are used on the most difficult jobs. Each contains special grits, scrubbers, surfactants and/or solvents to attack specific soils.

## WhiskPower 270 - Blue Lotion Soap with Scrubbers

A unique hand soap that gets its strength from a special blend of lotion, plastic scrubbers and surfactants. Plastic scrubbers have the cleaning ability of pumice while offering a smoother type of scrubbing action. The tiny scrubbers have a uniform consistency and clean with a rolling action. This action, plus the cleaning ability of the other ingredients, gives the user a powerful hand cleaner that is also mild to the hands.



## WhiskPower 280 - Tan Lotion Soap with Walnut Shells

One of the heaviest duty hand cleaners on the market today! It uses biodegradable walnut shells and extra heavy duty emulsifiers and degreasers. Removes ink, carbon black, aluminum and zinc smut, foundry dirt and caked grease.



## WhiskPower 292 - Paint Removing Lotion Soap with Pumice

A hand cleaner formulated specifically for paint removal. Contains non-petroleum based solvents that are safer to use in the removal of fresh or set-up paint. The addition of pumice promotes a mechanical scrubbing action to assist in the removal of paint residue.



# Products for Eradicating Germs

Three products, each for different situations but all designed to meet specific criteria in the elimination of various organisms. They are formulated to kill certain bacteria and germs while cleaning or treating the hands. All contain emollients to leave the hands soft and supple after each washing or treatment.

## WhiskCare 355 - Sanitizing Soap

A soap for people handling food consumed by the general public. This includes all food processing institutions or facilities, such as meat plants, kitchens, egg plants, seafood plants, restaurants and catering services. Complies with the current FDA requirements and meets the former USDA E-2 rating.



## WhiskCare 365 - Antibacterial Lotion Soap

This white hand soap is recommended for people in jobs with high public interaction. Perfect for use at schools, offices, institutions, etc. When eradication of germs is a necessity, and frequent hand washing is critical, this mild yet effective hand soap offers 100% cleansing plus antibacterial properties without drying the skin. Contains the broad-spectrum, antibacterial ingredient, chloroxyenol.

## WhiskCare 375 - Instant Hand Sanitizer

A clear gel sanitizer that kills 99.9% of the common germs that cause most of the everyday illnesses that are responsible for lost time and lost production. WhiskCare 375 can be used after each hand washing and between washings. Contains ingredients to prevent the skin from drying out. Use in the washroom or the work area. Complies with OSHA, CDC and APIC guidelines.



	WhiskCare 355 Sanitizing Hand Soap (E-2 Compliance)	WhiskCare 365 Antibacterial Hand Soap	WhiskCare 375 Instant Hand Sanitizer	Package Description	No./Case
Stock Number			W C-375-04-24	4 Fl. Oz Squeeze Bottle	24
	* W C-355-12-24	W C-365-12-24		12 Fl. Oz. Pump Bottle	24
	* W C-355-800-12	W C-365-800-12	W C-375-800-12	800 ml Bag-in-Bo	2
	* W C-355-D-4	W C-365-D-4		3.5 Liter D Bottle	4
	* W C-355-SN-4	W C-365-SN-4		1 Gallon Short Neck Bottle	4
	* W C-355-55	W C-365-55		55 Gallon Drum	N/A

\* Product dispensers for products in this row are shown on pages 9 and 10.

# Protective Skin Care Products

Many jobs require that a worker's hands come in frequent contact with a variety of chemicals, some harmful or irritating to the skin. For those with exposure to these environments, Whisk offers the following products to protect and restore the skin to its original condition.

## WhiskGuard 500 - Water Resistant Barrier Cream

Water-based chemicals may attack the skin leaving it susceptible to chafing and more serious forms of dermatitis. WhiskGuard 500 is ideal for people working with coolants and synthetic lubricants such as found in machine or stamping shops. Apply to the skin to form an invisible shield that repels water-based chemicals. WhiskGuard 500 contains aloe vera and lanolin, which aid the skin in returning to its natural condition.



## WhiskGuard 515 - Solvent/Oil Resistant Barrier Cream

Solvents act as defatting agents on the skin, causing dry skin, subject to cracking and bleeding. This allows bacteria to enter the cracks, often resulting in infection. WhiskGuard 515 is formulated for people working in paint shops and auto garages, or other areas where there is solvent contact. Apply to skin before exposure to the solvents. WhiskGuard 515 is silicone free and contains conditioners and moisturizers to help reinvigorate the skin.

## WhiskGuard 550 - Moisturizing Lotion

Use whenever skin becomes rough, cracked, or dried out from exposure to chemicals, work or weather conditions. WhiskGuard 550 is especially formulated to return skin to its original condition. Apply a small amount to the hands and rub into the affected area until completely absorbed by the skin. It is silicone and fragrance free. It contains aloe vera, lanolin, and other emollients to restore skin to its original condition.



Stock Number	WhiskGuard 500 Water Resistant Barrier Cream	WhiskGuard 515 Solvent/Oil Resistant Barrier Cream	WhiskGuard 550 Moisturizing Lotion	Package Description	No./Case
	W G-500-05-24	W G-515-05-24	W G-550-05-24	5 Fl. Oz. Squeeze Tube	24
	* W G-500-800-12	W G-515-800-12	W G-550-800-12	800 ml Bag-in-Bo	2

\* Product dispensers for products in this row are shown on pages 9 and 10.

# Handy Pre-Soaked Towelettes

Pre-soaked towelettes for removing tough soils quickly and conveniently. They are packaged in a canister that allows removal of one towelette at a time. The lid automatically snaps shut after a towelette is removed, keeping the remainder fresh and moist for the next use. This handy canister makes it ideal at the work bench, the office desk, in a utility truck or anywhere a need exists for a cleaning towel.

## Whisk-Its 850 - Towelettes Pre-Soaked in d-Limonene

Strong, yet gentle, reinforced disposable towelettes that are pre-soaked in a safe biodegradable orange d-Limonene solution for cleaning all types of soil quickly. Use it to clean the hands, equipment, furniture, and personal belongings. Whisk-Its remove grease, oil, tar, ink, sealant, insulating foam and other contaminants. Whisk-Its are a powerful cleaning tool and contains emollients to keep the hands soft, even after repeated use.



## P-850-WM - Wall-Mounted Whisk-Its Canister Holder

A two part canister holder for conveniently locating Whisk-Its throughout an office or factory. Two-piece construction allows the canister to be securely locked into the holder and easily removed for quick replacement.

## Whisk-Its 812 - Graffiti and Paint Remover

Towelettes, pre-soaked with a safe, non-petroleum solvent and other additives. It's effective and safe for removing paint and graffiti from walls, equipment or hands. Can be used in production or maintenance applications to remove graffiti or undesirable material from buildings or other property.



Whisk-Its 812 Graffiti and Paint Remover W I-812-6	Whisk-Its 850 Towelettes with d-Limonene W I-850-6	Package Description	No./Case
		75 10"x12" Towelettes	6

# Specialty Products

Throughout industrial plants, offices and institutions, there is a need for high quality, specialty cleaning products. Whisk has developed a limited line of these products, using the same expertise we used in developing the highest quality hand cleaners on the market today.

## Floor Cleaners & General Purpose Cleaners

### WhiskAway 900 - Orange d-Limonene Cleaner



A concentrated cleaner with d-Limonene for office, bathroom, factory floors and windows. This product may also be used for cleaning dirty machinery or machine parts. WhiskAway 900 is derived from citrus plants and is safe, natural, and leaves a mild, pleasant aroma after cleaning.

### WhiskAway 905 - General Purpose Alkaline Cleaner

This general purpose cleaner utilizes a revolutionary surfactant system that is effective on the heaviest dirt and grime. This system lowers the surface tension, bringing oily and greasy contaminants to the surface, then dissolves and suspends them without the use of solvents. WhiskAway 905 is designed for use as a general purpose cleaner in offices and factories.



## High Sudzing Dishwashing Soap



### WhiskAway 910 - Dishwashing Detergent

A dishwashing detergent which goes immediately into solution in either hot or cold water. A quick-acting detergent that attacks heavy greases and residue found on pots and pans. Although it contains powerful grease removers, it is mild on the hands.

Stock Number	WhiskAway 900 Orange d-Limonene Cleaner	WhiskAway 905 General Purpose Cleaner	WhiskAway 910 Hand Dishwashing Soap	Package Description	No./Case
* W A -900-SN -4	W A -905-SN -4	W A -910-SN -4	1 Gallon Short Neck Bottle	4	
W A -900-5P	W A -905-5P	N/A	5 Gallon Pail	N/A	
* W A -900-55	W A -905-55	W A -910-55	55 Gallon Drum	N/A	

\* Product dispensers for products in this row are shown on pages 9 and 10.

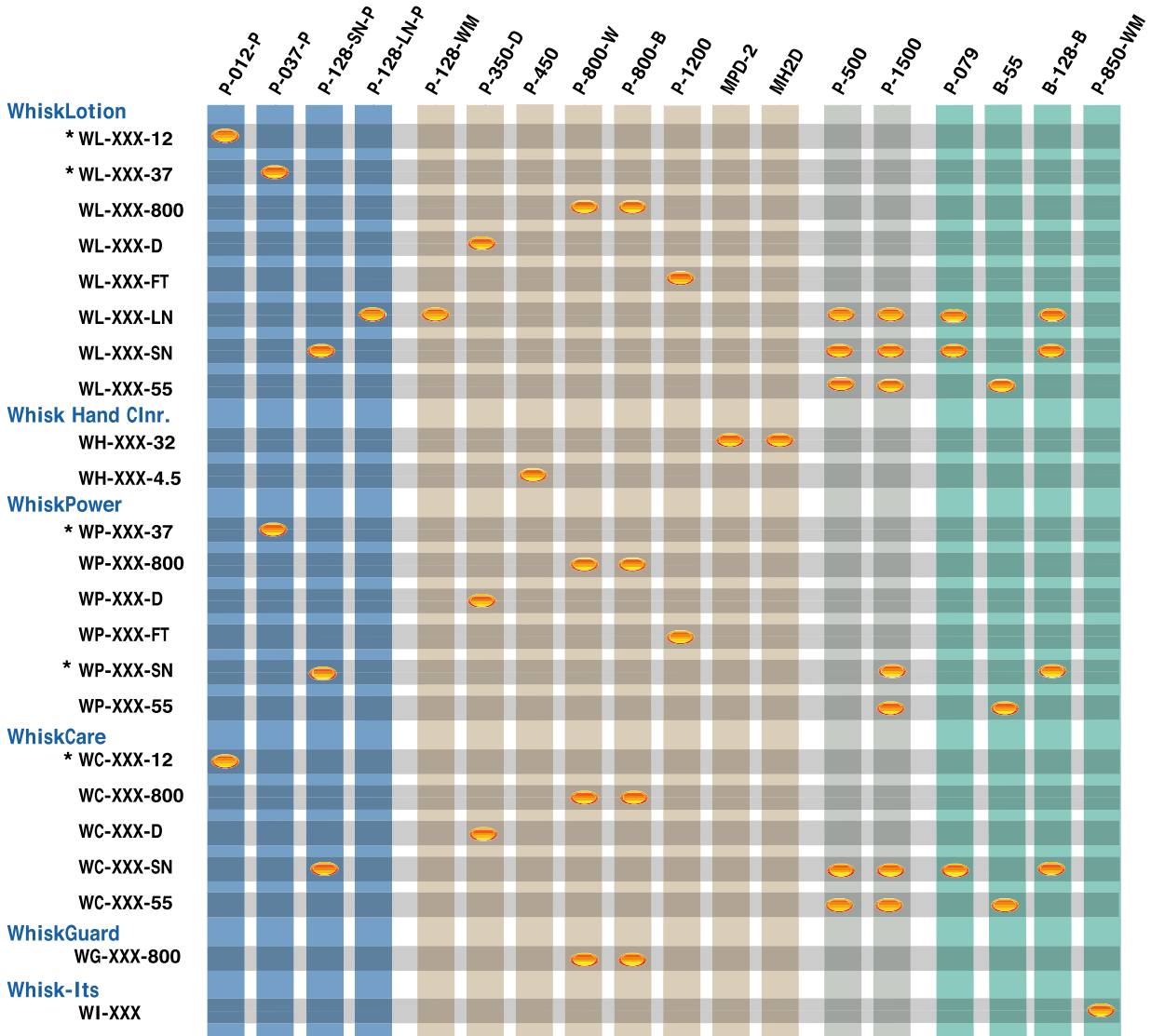


**Pumps For Free Standing Bottles**

**Dispensers That Can Only Fit The Specified Bottles**

**Fill Type**

**Specialty Dispensers**



\* Pumps included with free standing bottles



P-012-P



P-037-P



P-128-SN-P



P-128-LN-P



P-128-WM



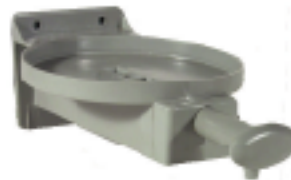
P-350-D



MPD-2



MPH2D



P-450-D



P-500



P-800-W



P-800-B



P-1500



P-1200

